

REINTEGRO

'Reintegro' markings, (translated as reinstate, refund or exchange), were applied to obsolete stamps returned to the Post Office in exchange for newer issues, most likely at the time when there was a monarchy change in Spain and when new stamps were received in Manila depicting the new monarch. Stamps are known with manuscript markings or overprinted in typeset. It is assumed that full sheets of 100 stamps were typeset overprinted, and any exchanged stamps occurring in less than a full sheet, or those being returned from rural post offices, were marked in manuscript.

MANUSCRIPT 'REINTEGRO' MARKING

KING AMADEO

1872



Scott #46



Scott #46

KING ALFONSO XII

1875 - 1877



Scott #52



Scott #52



Scott #52



Scott #52



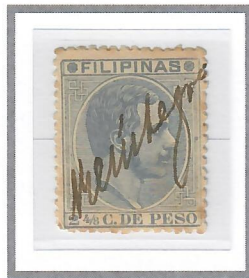
Scott #58

REINTEGRO

MANUSCRIPT 'REINTEGRO' MARKING

KING ALFONSO XII

1880 - 1886



Scott #79



Scott #80



Scott #80



Scott #80



Scott #80



Scott #80



Scott #80



Scott #86



Scott #88



Scott #88



Scott #88

REINTEGRO

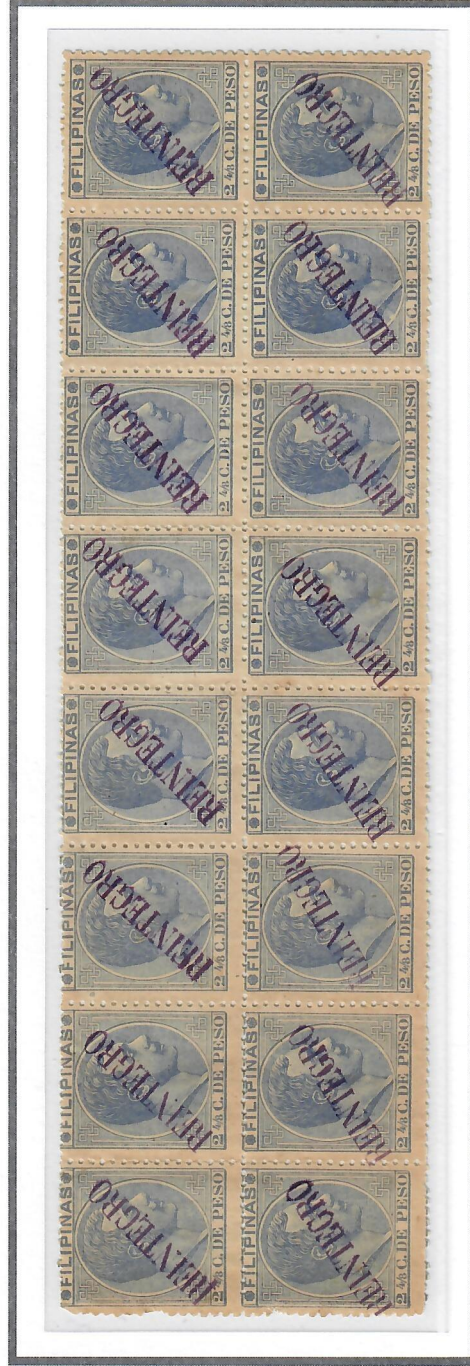
TYPESET OVERPRINTS

The typeset overprint is only known on two stamps issued during the reign of King Alfonso XII: 2-4/8c issue of 1886 (Scott #80) and 25c issue of 1882 (Scott #88). They are printed diagonally in purple or violet from what appears to be a single die. Letters are 3.5mm tall and 20.2mm wide (varying slightly due to ink thickness). The angle of the overprint varies quite significantly across the sheet, ranging between 30° and 55°. Based on large blocks examined, it appears that the angles vary from one stamp to the next on the die.

KING ALFONSO XII

2-4/8C ULTRAMARINE (SECOND RETOUCH)

Top Row: Overprint Angle Ranging Between 41° and 48°



Bottom Row: Overprint Angle Ranging Between 31° and 40°

