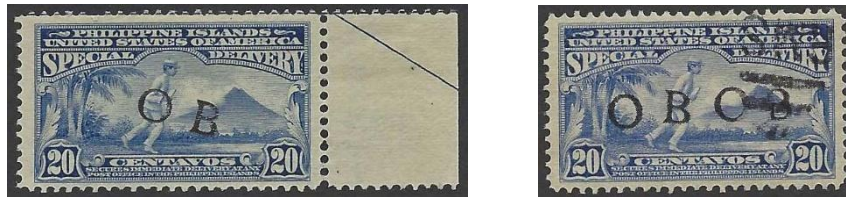


C. Special Delivery Issue of 1911 (Scott # E3)

1. Black OB Overprint



The different OB positions would indicate that individual hand pressed metal dies were also used; right Special Delivery stamp with double OB variety and partial RPO cancel (RMS, Railway Mail Service).



Deep ultramarine to pale ultramarine colors

Note: As shown above, these particular E3 stamps have OB overprints in a more fixed or definite horizontal location. This observation suggests that the possibility of a special printing plate of 50 OB clichés existed. FYI, a pane of these stamps has 50 subjects. The printing of the letters is more shifted to the right-hand side. Parts of the letters are also poorly printed while the OB overprints on the regular definitive stamps have finer and more homogenous printing. Again, could this printing process involved a manual operation?