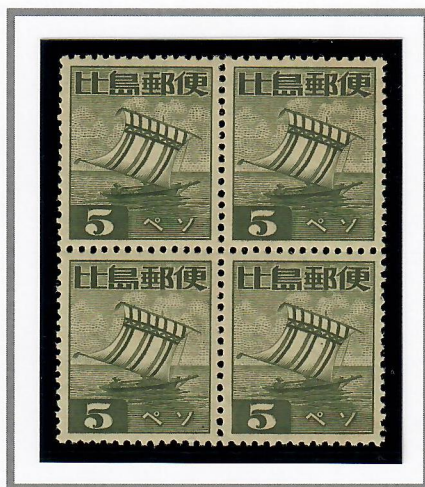


APRIL 10, 1944

5P REGULAR ISSUE

Issued in plates of 400 stamps divided into four panes of 100 stamps (10 x 10). Plate imprints "Naikaku Insatsu Kyoku Seizo" (Printed by Cabinet Printing Bureau) appear on the bottom margin below position 98 in the same colour of the printed stamps.

Due to an unexpected rush of purchasers of the entire 2p printing (40,000 stamps) on September 16, 1943, the 5p stamp which was due for release a few days later, of which only 20,000 had been printed, was postponed. As a result, additional quantities were ordered from Tokyo and a precautionary additional quantity of the 5p stamp was ordered along with the 2p stamp. The second printing of the 2p stamp and the first and second printing (20,000 and 45,000 respectively) of the 5p stamp was issued on April 10, 1944.



IMPRINT BLOCK

