

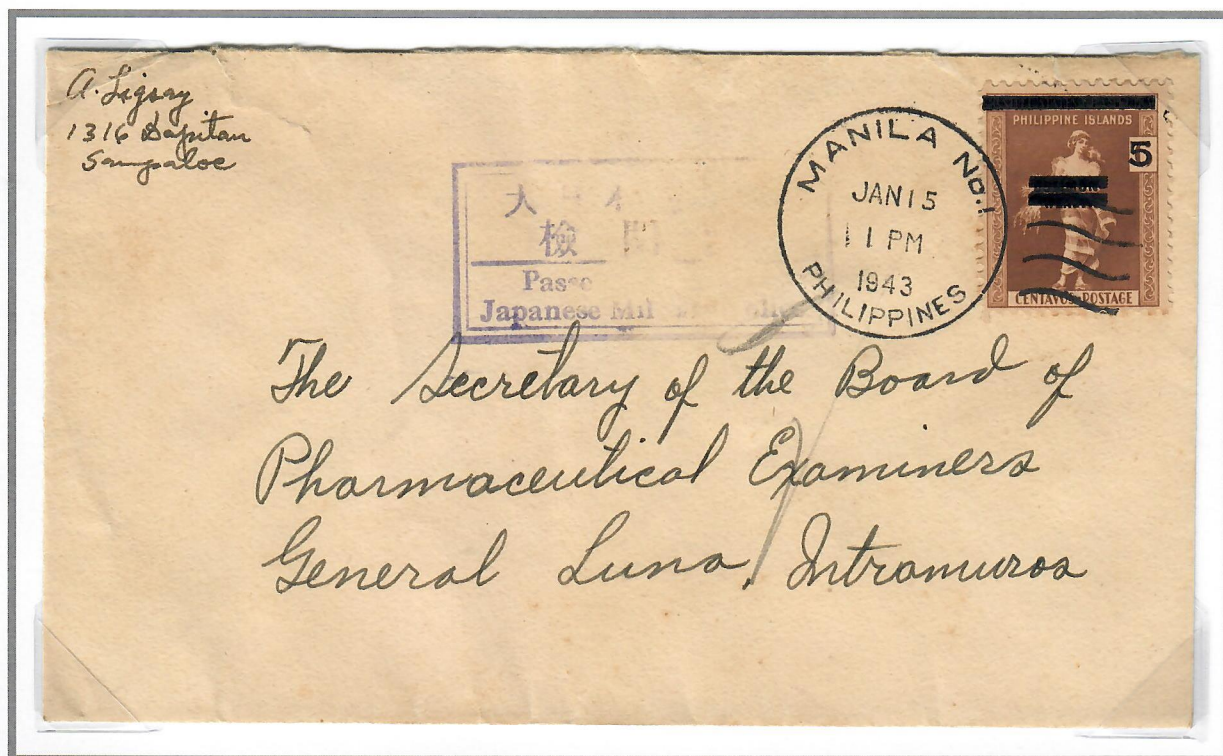
**CIVIL CENSOR MARKS**

**CITY OF MANILA**



*Garrett IA2*

**COMMERCIAL COVER**



15 January 1943 – Commercial Manila circulating cover with 5c Regular issue paying First Class domestic postal rate. Stamp tied with Manila No. 1 Duplex cancel. Rectangular Boxed Censor handstamp on bottom left (Garrett IA2) with censor's initials.

*The Manila No. 1 Duplex Postmark was in use between 1 January 1943 and 3 February 1945*