

# New Air Route from USA to Philippines via Belgian Congo

## Did not get to Manila - Stamps Removed

This exhibit ends with a First Flight Cover addressed to a Manila stamp dealer with the stamps removed.

The new route from USA to Leopoldville by FAM 22 raised the possibility of a new route to the Philippines, by connecting with the British Horseshoe route. Japan attacked just after this letter was mailed. After reaching Leopoldville, the letter was returned to its sender. The U.S. censor made a note that stamps were missing.



San Juan, Puerto Rico, 6 Dec 1941, addressed to Manila. Returned from Leopoldville to USA.

### Route

First Flight of Pan-Am FAM 22 left New York on 6 Dec via Bermuda to Puerto Rico. All other FAM 22 flights left from Miami. It went via Trinidad, Brazil, Gambia and Nigeria and reached Leopoldville on 12 Dec.

The sender had intended for it to go on the Horseshoe route via Egypt and India to Singapore, and then to Manila.

However Japan attacked Philippines and Pearl Harbour, so it was returned to USA.

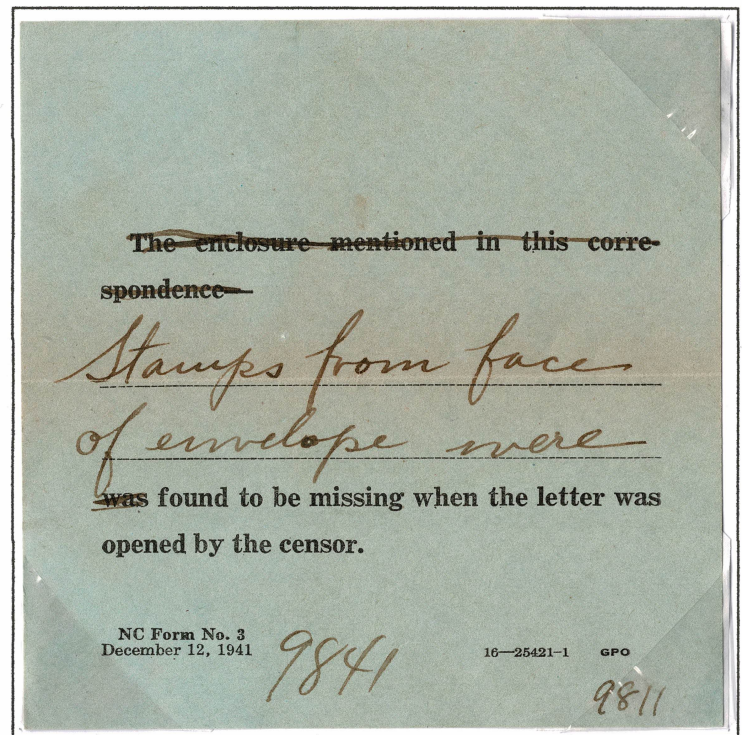
### Backstamp

Leopoldville 12 Dec.

### Censorship

U.S. censor tape: EXAMINED BY 9841.

U.S. censor form with same number 9841 stating that stamps from face of envelope were missing.



U.S. censor NC Form No. 3.  
December 12, 1941