

Extension of Pan-Am Clipper service to Singapore

From May 1941, some clipper flights went from Manila to Singapore, whilst others went to Hong Kong and Macao.

To India

Rectangular AIR MAIL / SINGAPORE / VIA "CLIPPER" struck by Manila Post Office.



Route

Air to Singapore.
Air to Calcutta.

Markings

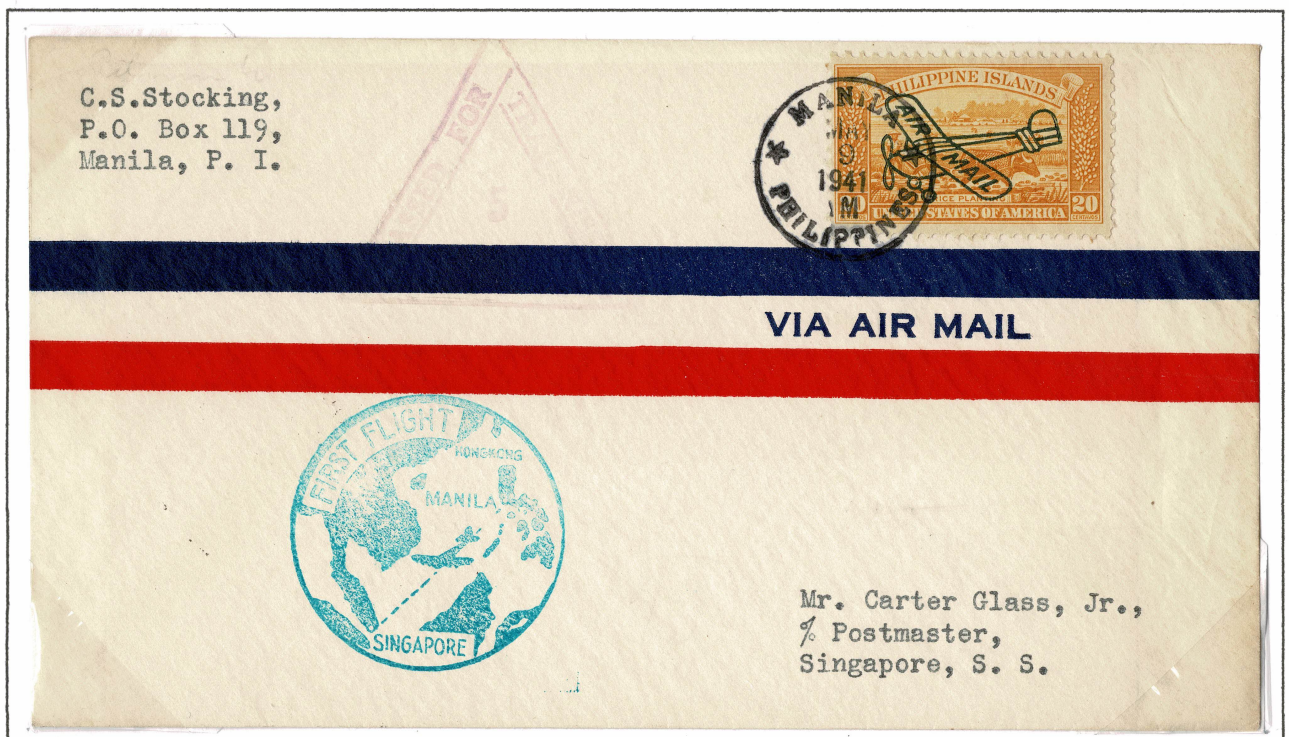
Passed by censor at
Singapore.
Censored at Calcutta.
Calcutta cds 7 Nov.

Manila
25 Oct 1941
to Calcutta

To Singapore

Because of the War, there were fewer FFCs for this flight than for any other major Philippines flight.

Rate
20c, up to 5g.
8c air Manila to
Singapore.
12c foreign.



C.S. Stocking,
P.O. Box 119,
Manila, P. I.

VIA AIR MAIL

Mr. Carter Glass, Jr.,
Postmaster,
Singapore, S. S.

Manila
9 May 1941
to Singapore