

New Rates to Europe via Singapore

On 1 January 1940 the airmail rate to Europe via Singapore was reduced from 30c to 28c per 5g.

Weight	Up to 5g	6-10g	11-15g	16-20g	21-25g	26-30g
Airmail	28	56	84	1.12	1.40	1.68
Letter	12	12	12	12	18	18
Total	40	68	96	1.24	1.58	1.86

UPPER COVER - Rate
40c, single, up to 5g.

LOWER COVER

Rate

1P 86c for a letter 26-to-30g.
Post Office pencil "1.86" even though
letter franked with 1P 96c,
overpaid by 10c.

"AV 2" red manuscript at Singapore.
Singapore used an AV2 handstamp
from January 1940, so the late
manuscript use is interesting.

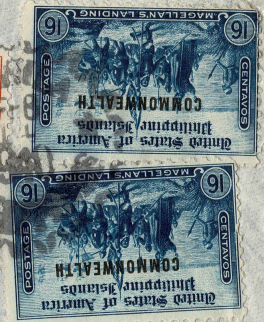


Manila 14 Feb 1940, to Zurich

Manila 20 Jan 1940, to Basel

The Philippine Guaranty Co., Inc.

2nd Floor, Insular Life Bldg.
MANILA, P. I.



Swiss Reinsurance Company
60 Mythenquai, Zurich
Switzerland



PASSED FOR TRANSMISSION

aw

AIRMAIL