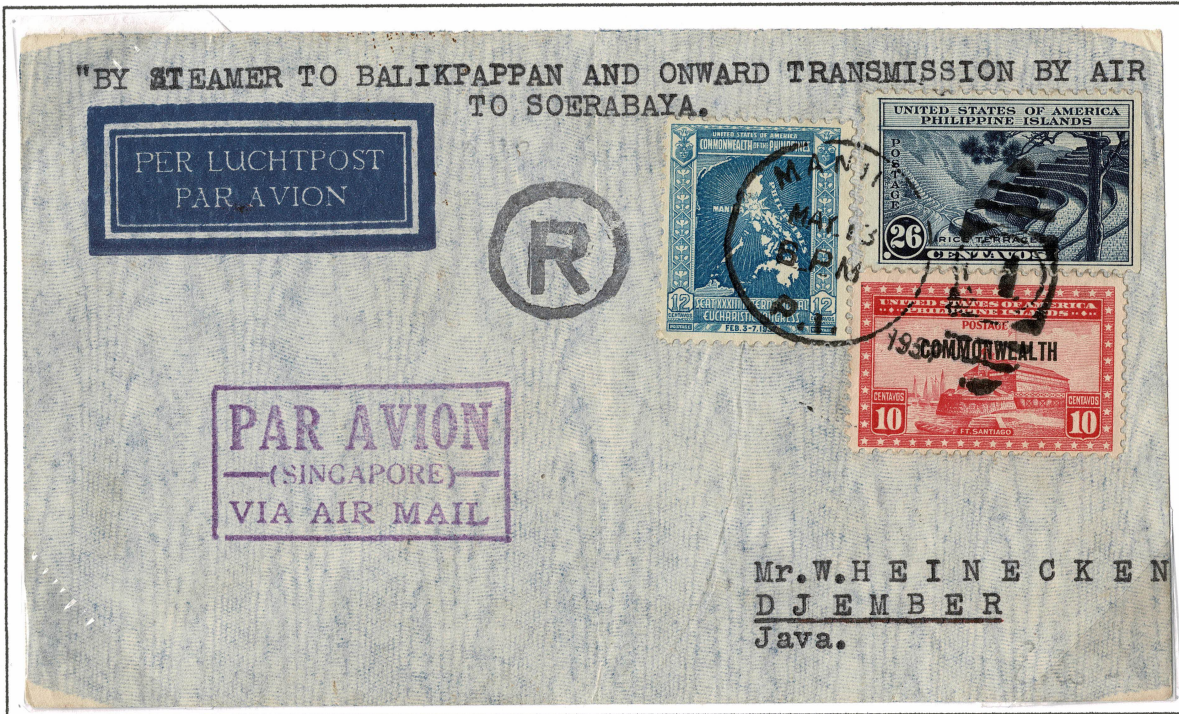


## To Netherlands East Indies Intended to go by Special Trial Flight

The Dutch Government in NEI was very keen to have a regular route between Java and Manila, to connect with the Pan-Am flights. I believe the sender intended the upper letter to go by air on the return leg of a trial flight.



### Route

In the 11 April 1937 issue of the Straits Times, KNILM announced an agreement with Pan-Am. The endorsement suggests the route by sea from Manila to Balikpapan, and air to Soerabaya.

In practice, the Manila Post Office just sent the letter by ship to Singapore, and it then travelled by air to Soerabaya, a port on the Imperial route to Australia. By road to Djember.

Manila  
13 May 1937  
to Djember, Java

### Marking - R in circle.

This is not registration. No such mark or treatment in the Philippines. I believe it was a private mark applied by the sender, possibly as an unheeded instruction to his Manila agent to register the letter.

### Rate

I believe the Philippine stamps were affixed in NEI. 48c = 12c foreign letter, + 20c registration, + 16c airmail.

## A standard commercial letter

### Route

By sea from Manila to Singapore.

By air to Batavia.

### Backstamp

Batavia 30 June.

### Rate

20c, up to 5g.

8c air from Singapore to Batavia.

12c foreign letter.

Manila  
19 June 1937  
to Batavia

