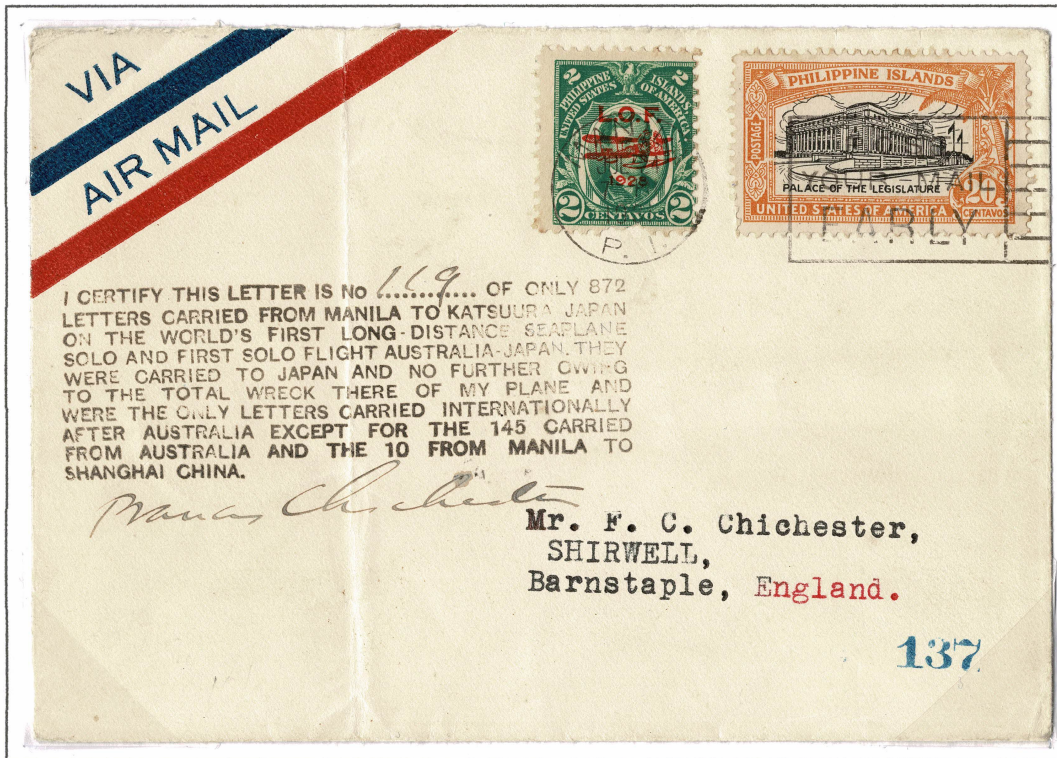


Chichester's Flight

Crashed in Japan

At Manila he picked up many philatelic covers, mostly addressed to himself at various places on his route.
His plane crashed at Katsuura, Japan.



Manila 24 July 1931, addressed to England

Route

From Manila the plane flew to Shanghai.

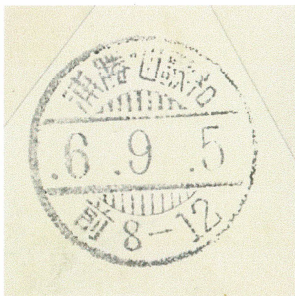
His next stop was Tokyo.

The plane crashed when it hit an overhead cable while taking off from Katsuura.

Explanatory Marking

After the crash, Chichester produced the 10-line explanatory mark. 872 covers were stamped, numbered and signed as per the upper cover. However a much smaller quantity of covers, like the lower cover, was not stamped.

I believe he only stamped the covers addressed to himself.



Scan of reverse of lower cover

Postmark

Both covers were back-stamped with the above Tokyo postmark.



Manila 23 July 1931, addressed to Iceland, a stop on his planned route.