

PERSIAN GULF ROUTE

PRE-PHILATELIC PERIOD MAIL



Manila 14 de Febrero de 1840.

1840 FEBRUARY 14: MANILA to LONDON

Via GALLE - BOMBAY - BASRA - ISKENDERUN - MARSEILLES

Received Bombay in manuscript, "20 June 1840" and by British Post with red oval "INDIA". East India Company steamer "Victoria" to Basra. Then overland to Marseilles via Iskenderun, Turkey. Backstamped London, August 6.

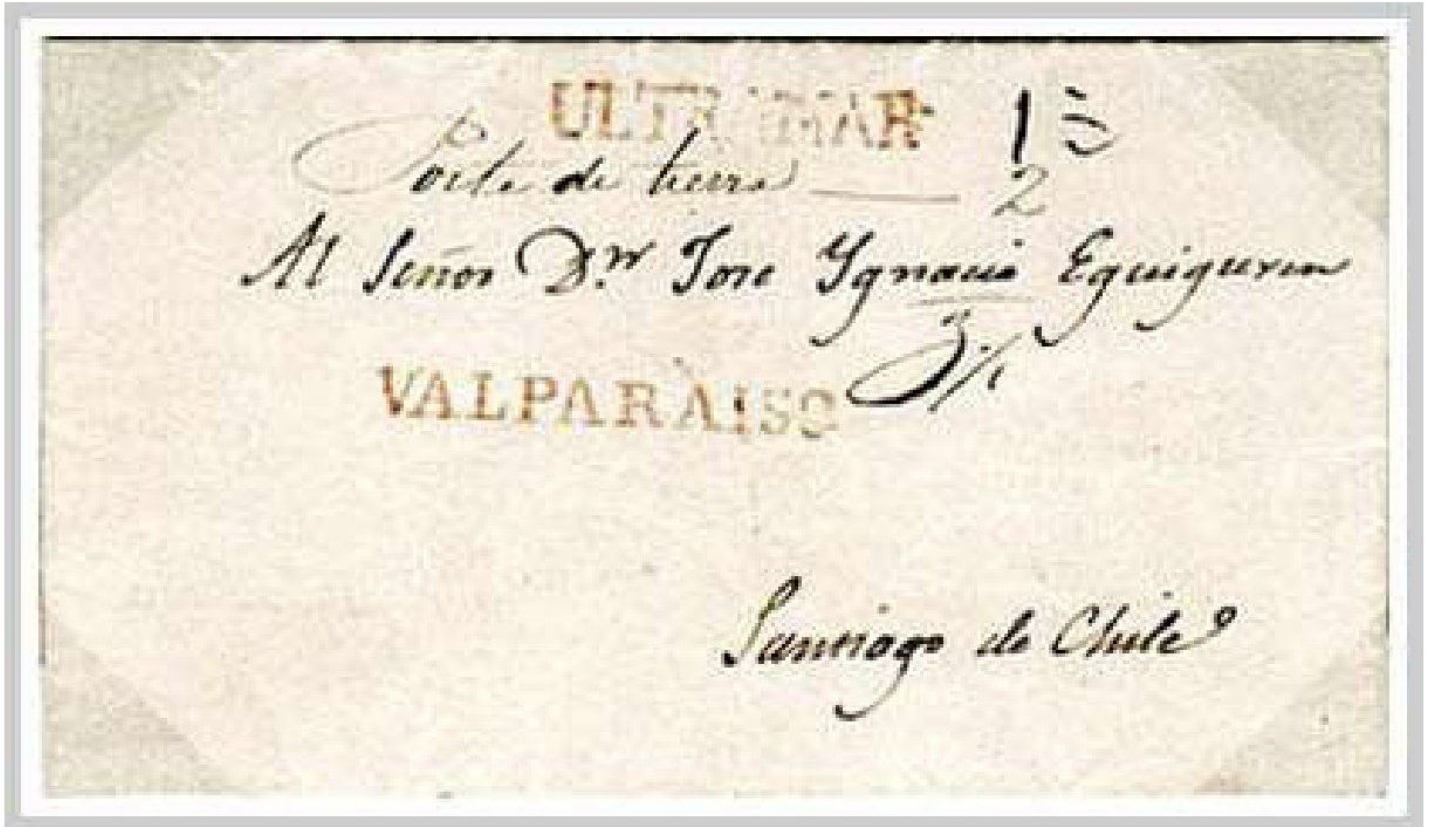
Charged 3/6d per 1/2 oz., 1838 Ship Letter Rate from India.

Forwarding Agent: EDMOND BIBBY. BOMBAY

ONLY KNOWN

PACIFIC OCEAN ROUTE

PRE-PHILATELIC PERIOD MAIL



Manila 15 de Agosto de 1838

1838 AUGUST 5: MANILA to SANTIAGO, CHILE

Per letter contents endorsed to "D. Isaac Engle, Captain of Brigantine Richard Ahop".
Privately circulated to the Port of Valparaiso, Chile with the strike
"ULTRAMAR / VALPARAISO" for forwarding to Santiago.

*Rated total 3 1/2: taxed "1 1/2" for sea carriage and land carriage
with manuscript "Porte de tierra --- 2".*

PHILATELIC PERIOD PRE-UPU

FOREIGN MAIL TO COUNTRIES WITH NO POSTAL TREATIES WITH SPAIN



1862 AUGUST 21: MANILA to LONDON

Received on front, October 15.
Forwarding Agent MARTIN DYCE & CO., MANILA

10 Annas postage for 1/2 oz. Letter Rate via Marseilles.



1863 APRIL 7: MANILA to SADDLEWORTH, UK

Via SINGAPORE - SUEZ - ALEXANDRIA - MARSEILLES - LIVERPOOL
Via Singapore, December 12. Arriving Liverpool, January 27, 1864.

Forwarding Agent TILLSON, HERMANN & CO., MANILA

10 Annas postage for 1/2 oz. Letter Rate via Marseilles.

PHILATELIC PERIOD PRE-UPU

FOREIGN MAIL TO COUNTRIES WITH NO POSTAL TREATIES WITH SPAIN

1860's Strait Settlement



1877 FEBRUARY 7: MANILA to MARSEILLES

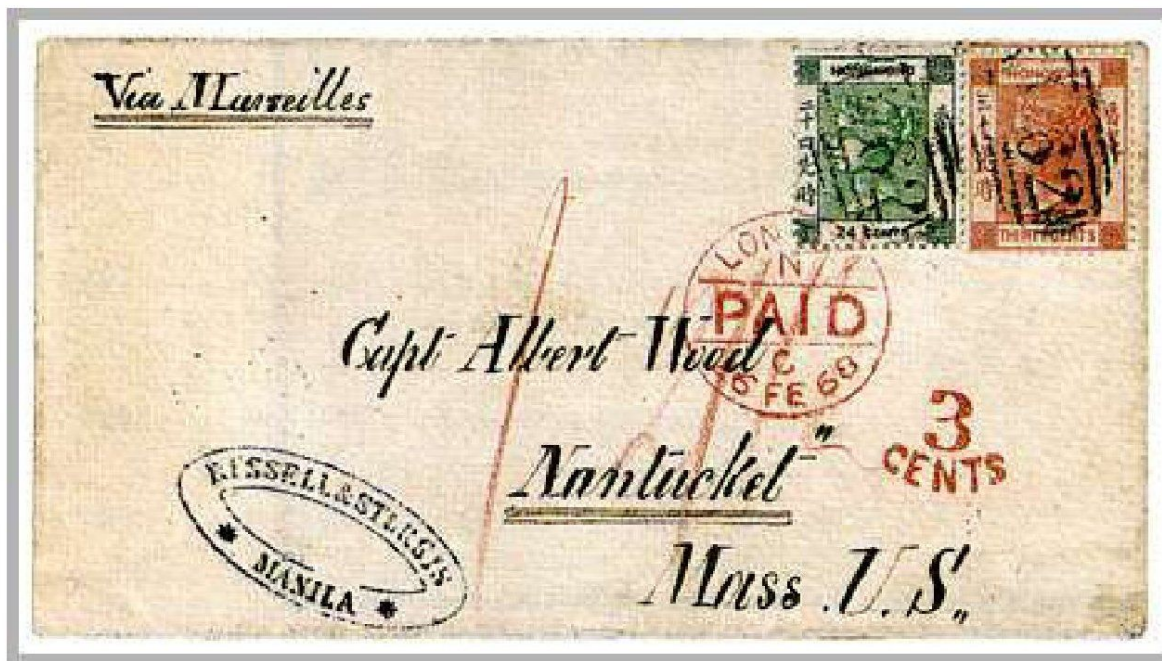
Via SINGAPORE - SUEZ - ALEXANDRIA

By French Paquebot from Singapore to Marseilles. Received March 15.
Forwarding Agent: G. VAN POLANEN PETEL & CO., MANILA

2c Franking for Single Outbound Printed Matter Rate.

PHILATELIC PERIOD PRE-UPU

FOREIGN MAIL TO COUNTRIES WITH NO POSTAL TREATIES WITH SPAIN



1868 JANUARY 12: MANILA to MASSACHUSETTS

Via HONG KONG - SUEZ - ALEXANDRIA - MARSEILLES -
LONDON - SOUTHAMPTON - NEW YORK - BOSTON

Hong Kong "B62" barrel postmarks and January 12 datestamp on reverse. P&O Line to London.
German Lloyd Line for Atlantic crossing to New York, then by bag to Boston.

Forwarding Agent: RUSSELL & STURGIS, MANILA

*54c Franking for 3/4 oz. weight: Computed at 50c Hong Kong to Europe
and 4c Trans-Atlantic rate. Charged 3c upon arrival for Inland Delivery.*

PHILATELIC PERIOD PRE-UPU

FOREIGN MAIL TO COUNTRIES WITH NO POSTAL TREATIES WITH SPAIN



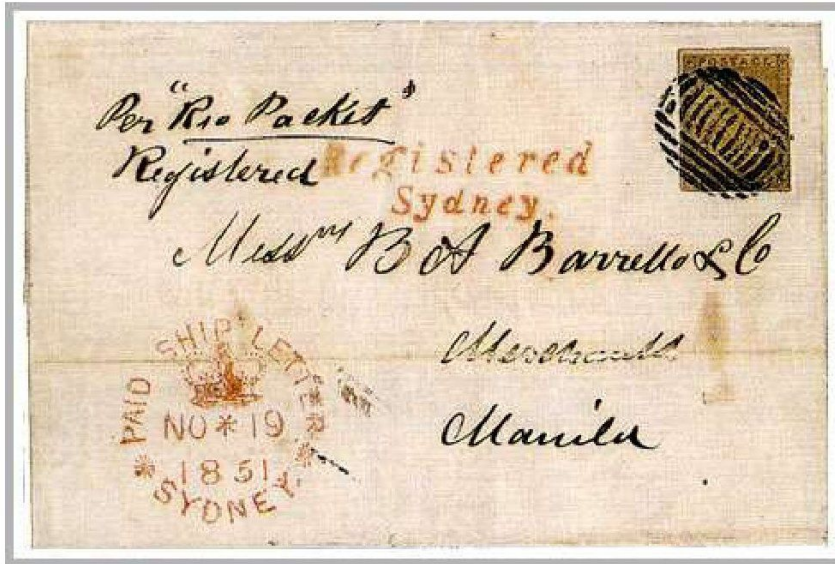
Via HONG KONG - SUEZ - ALEXANDRIA - GREECE - TRIESTE -
VIENNA - HAMBURG - MALMO

From the Swedish Consulate in Manila. By P&O Line to Alexandria,
by private ship to Greece, then transferred to Austrian Post to Vienna
via Trieste, and by German Post to Hamburg.

*Pre-paid 2/ per 1/2 oz., 1854 Rate from Hong Kong,
1/5d for Austrian Post and 12 1/2c for German Post.*

INBOUND MAIL

SUBJECT TO LOCAL POSTAL CHARGES



1851 NOVEMBER 18

NEW SOUTH WALES to MANILA

Endorsed "Per Rio Packet / Registered".

Postmarked in red
"PAID SHIP LETTER * SYDNEY * NO 18 / 1851"
Manila backstamped
blue Baeza January 20, 1852.

Registration Fee assumed to be paid in cash.
Blue numeral "1" (Real) per 1/4 oz.
Local Postal Charge
for incoming mail from Asia.

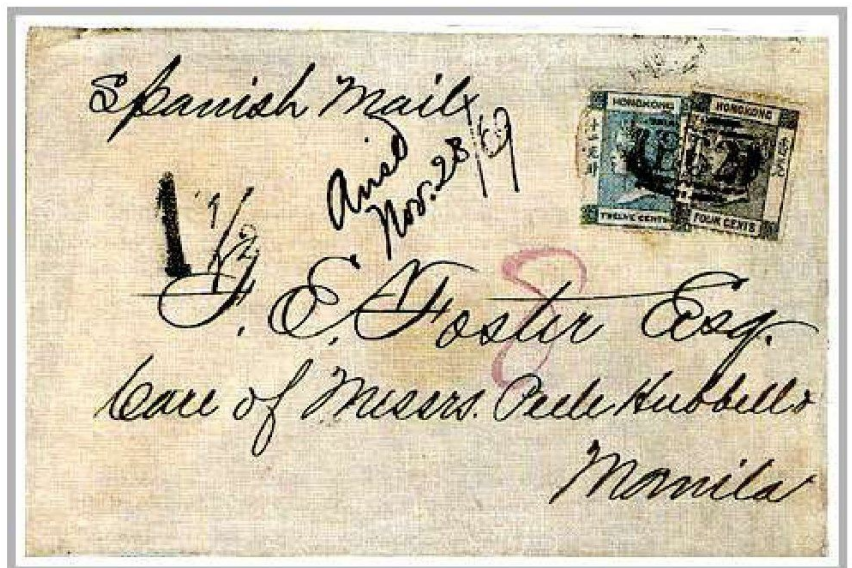
1869 OCTOBER 22

HONG KONG to MANILA

Endorsed in manuscript "Spanish Mail".

Postmarked on reverse.

Black numeral "1 1/2" (Reales)
Local Postal Charge per 12 adarmes
for incoming mail from Asia.



INBOUND MAIL

SUBJECT TO LOCAL POSTAL CHARGES



1859 JULY 30

BELFAST, IRELAND to MANILA

Via LONDON - SOUTHAMPTON - ALEXANDRIA -
SUEZ - HONG KONG

Arriving Manila, September 5.

Blue numeral "2" (Reales) per 1/4 oz.
Local Postal Charge
for incoming mail from Europe.

1805 MAY 28

ARANJUEZ, SPAIN to MANILA

Via CAPE OF GOOD HOPE - INDIA

Black numeral "3" (Reales de Plata)
Local Postal Charge.

**THE EARLIEST RECORDED
LOCAL POSTAL CHARGE
APPLIED ON INCOMING MAIL
PASSING THROUGH THE
SPANISH-PHILIPPINES POSTAL
SYSTEM**



INBOUND MAIL

SUBJECT TO LOCAL POSTAL CHARGES



1838 MAY 20

VALENCIA, SPAIN to MANILA

Via CAPE OF GOOD HOPE - INDIA

Black numeral
"4" (Reales) Local Postal Charge.

1849 MAY 22

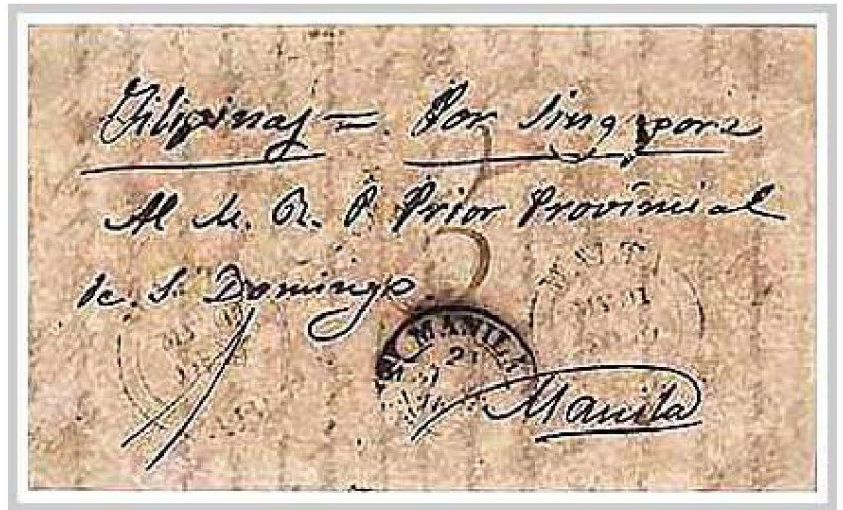
NAPLES to MANILA

Via MALTA - ALEXANDRIA - SUEZ - BOMBAY -
SINGAPORE

Arriving Malta, May 31.
By P&O Packet to Singapore.

Received Manila with July 21
black Baeza date stamp.

Manuscript "5" (Reales) Local Postal Charge
per 1 1/4 oz. weight.



INBOUND MAIL

SUBJECT TO LOCAL POSTAL CHARGES



1849 DEC. 20: EL FRESNO, SPAIN to MANILA

Via ALGECIRAS - GIBRALTAR - ALEXANDRIA -
SUEZ - SINGAPORE

Applied with fancy red "A" for Abono or Postage Due at Algeciras.
Gibraltar to Singapore by B.P.O.. Received Manila,
March 10, 1850.

Manuscript "6" (Reales) Local Postal Charge
for Single Inbound Rate from Spain.



1850 SEPTEMBER 15: MADRID to MANILA

Via GIBRALTAR - ALEXANDRIA - SUEZ -
GALLE - SINGAPORE

Addressed to Bulacan Province.

Blue numeral "6" (Reales) Local Postal Charge
for Single Inbound Rate from Spain.

a



**1853 DECEMBER 19
MADRID to MANILA**

Via
GIBRALTAR - ALEXANDRIA - SUEZ - GALLE
- SINGAPORE

Secular letter sheet received on reverse,
February 24, 1854

Blue numeral "9" (Reales) Local Postal Charge
for 3/4 oz. Inbound Rate from Spain.