



PHILIPPINES

from the D.J.J. Lutera Collection

Special Delivery postal usage in Modern Times



Special delivery / Postage due (RTS)

Manila circulating

1963. SEP. 26

Caloocan, Rizal to **Manila**

"See-the-World" contest promo

Returned to sender: Reason "Refused to pay postage"

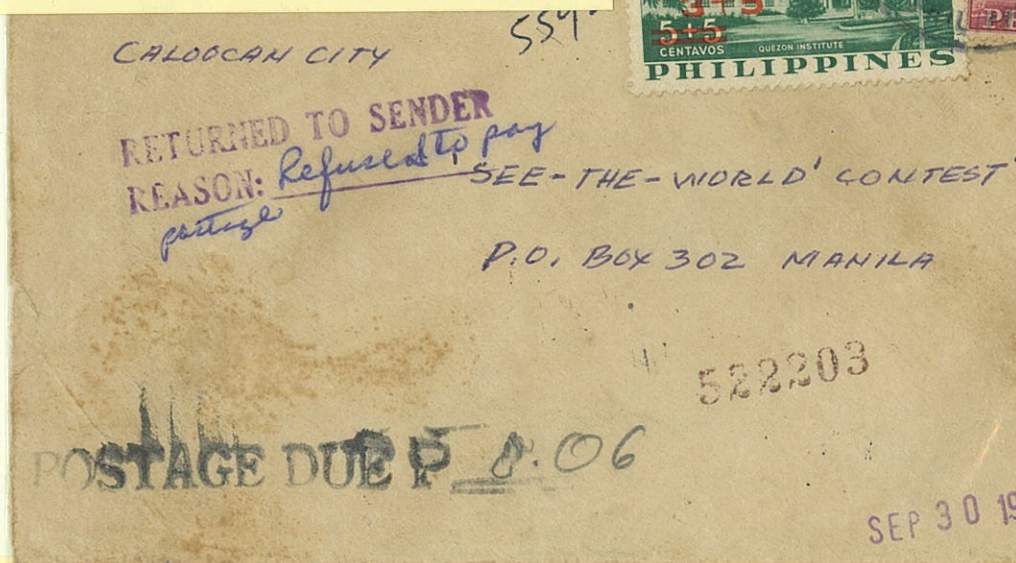
Special delivery stamps paying for Airmail rate

Outgoing to U.S.A.

1958. JAN. 09

Tondo, Manila to

Vallejo, CA, USA



Notes: Letter entry mailed as first class and endorsed special delivery however, sender used semi-postal stamps 3+5 ctvos (not valid for postage) hence assessed postage due of 6-ctvos. Mail returned to sender (RTS) for action but refused (Sep. 30). Notation made. Forwarded to Manila CPO and tag-numbered – 522203 and docketed at Dead Letter Office (DLO) – October 17.

Terminology:

Postage Due – Payment not sufficient for the intended service

Returned to Sender (RTS) – Letters/mail matters returned for corrective action or additional charges.

CPO – Manila Central Post office (Lawton)

Dead Letter Office – where unclaimed or voided mail matters end up for disposal.

Notes: During this period (late 1950s), the Airmail rate to the U.S. mainland was P0.60. Notation (Manuscript) "Ordinary Air mail pls." unusual but passed postal authorities.