



PHILIPPINES
from the D.J.J. Luter Collection

Introduction of Special Delivery service and Early usage **Forerunner issues**

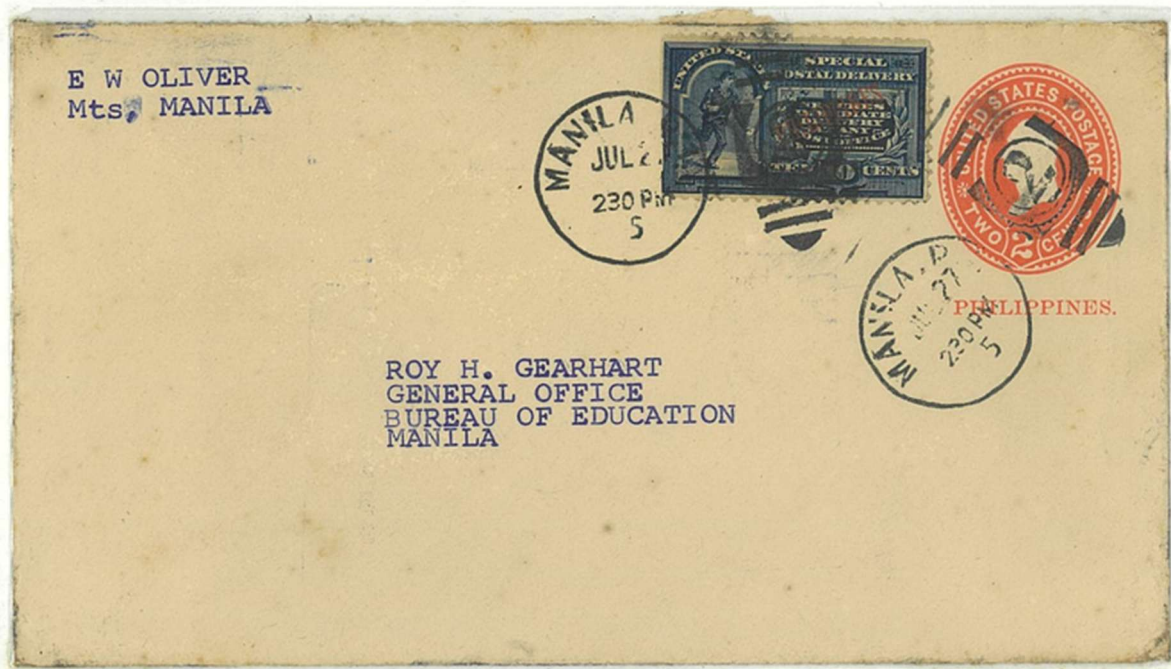
Special Delivery

Early usage: Within Manila

October 1901. The **special delivery service** was inaugurated on *October 15*. It was first offered to U.S. service personnel, *no formal record of the first day service issue, very few cover examples bearing the E1 are known* but they exist. Manila post office and a few Army and Naval camp postal units received their share of the special delivery stamps. The rate of U.S. 10-cents (one nickel) was the prevailing rate of the service in the U.S. mainland.

The Manila post office recruited four new young postmen and assigned them to be special delivery messengers, each handling this new mail service in the four districts of Manila.

In September 1906, the E1 remainders were recalled and destroyed when the postal authorities started selling and use of the new 1906-design E2 special delivery stamp



1905. Jul. 27. Special delivery mail
Manila circulating (within city limits)
Correspondence between two Thomasite teachers

*Note: The **Thomasites** were the first American teachers brought in from the mainland by the American civil government to assist and support the teaching programs and establish institutional reforms of the educational system in the Philippine islands*