



PHILIPPINES  
from the D.J.J. Lutera Collection

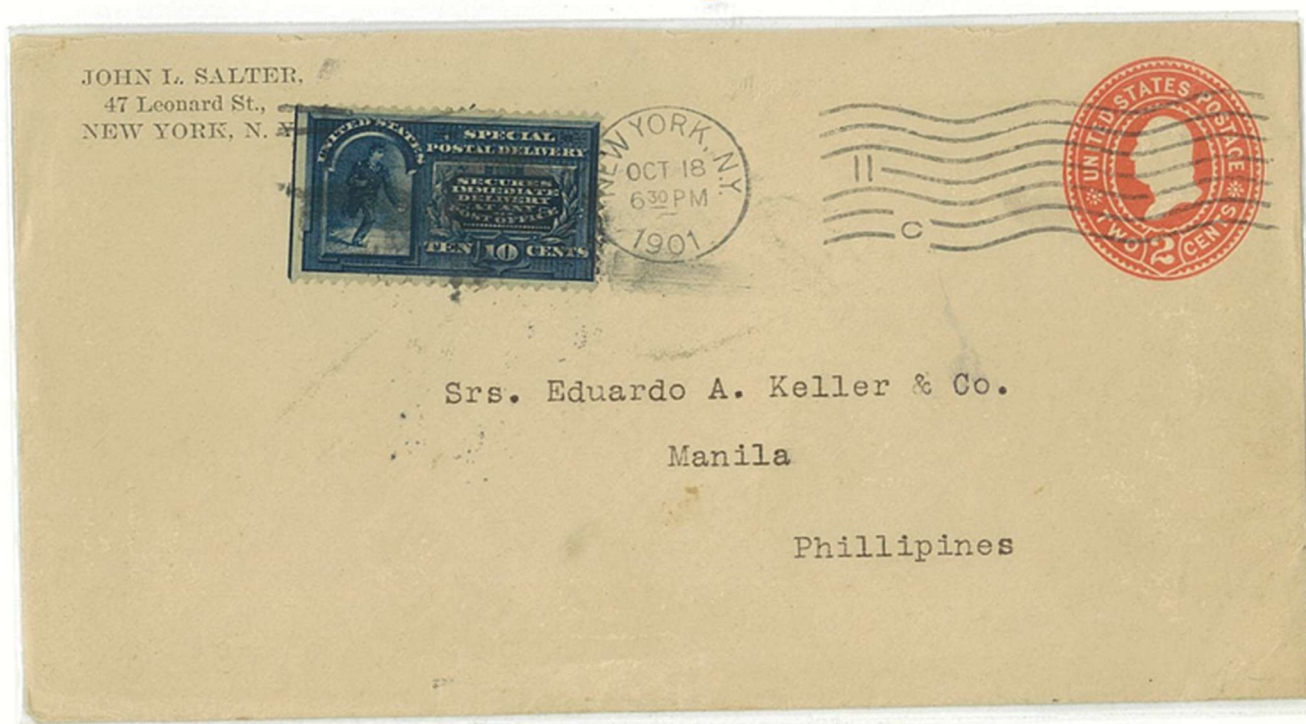
## Introduction of Special Delivery service and Early usage *Forerunner issues*

Special Delivery

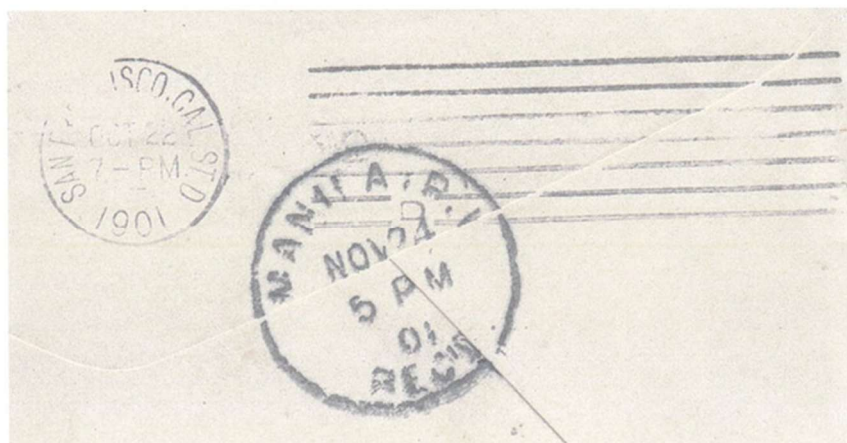
Early USPI – Incoming mail

As early as 1899, there were several early attempts of sending business and private mails via **special delivery** service from the U.S. mainland to the newly acquired American colonies, including the Philippines and such examples are quite unusual and hardly extant.

*Early usage of US Special Delivery stamp*  
**E5 un-overprinted**



**1901. Oct. 18. New York to Manila via San Francisco (Oct.22/7PM)**  
Addressed to Keller & Company, Manila. Possibly travelled by train NYC to SFC then via steamer to the Philippines. Manila receiver Nov.24/5PM.



*San Francisco, CAL (Oct.22) and Manila (Nov 24) backstamp receivers*