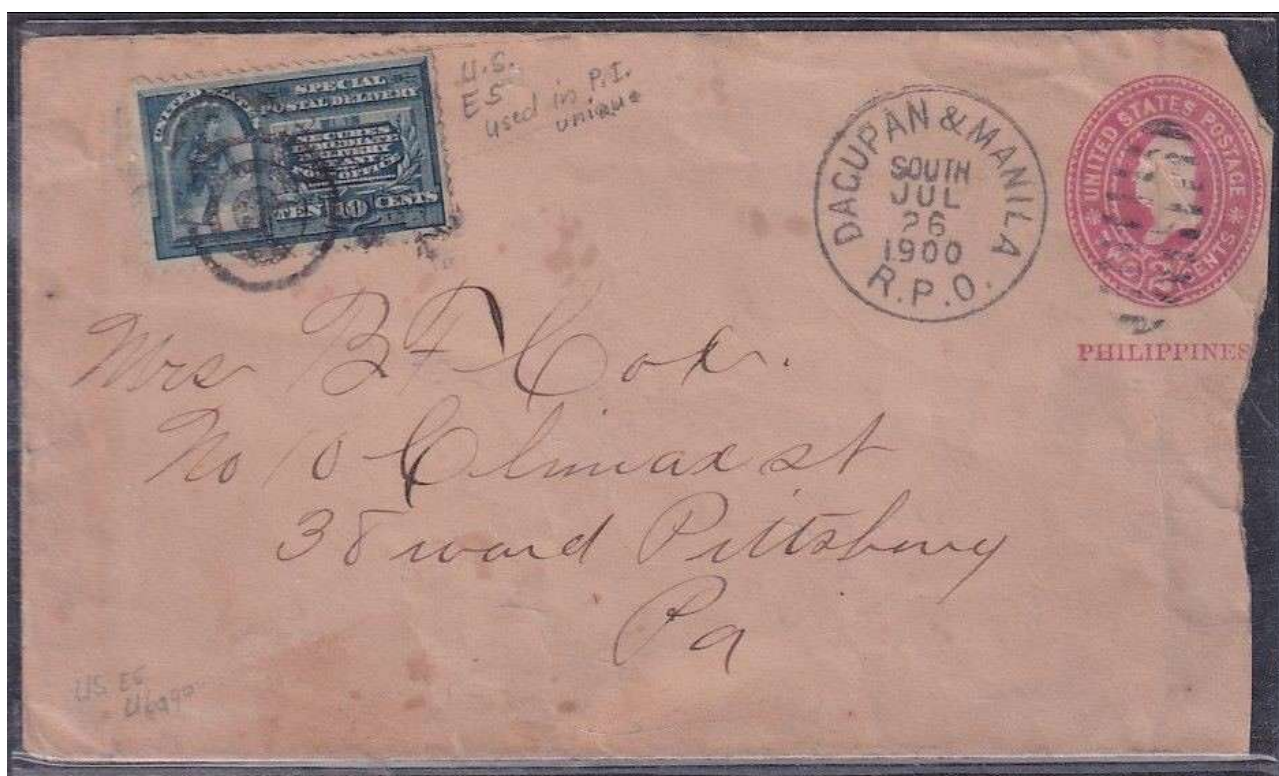




PHILIPPINES
from the D.J.J. Luter Collection

Introduction of Special Delivery service and Early usage *Forerunner issues*

Early usage of US Special Delivery stamp
E5 un-overprinted



(From the D.J.J. Luter Philatelic Collection)

26 JUL 1900. Perhaps a soldier's mail was posted from the field to his wife in Pittsburg, Penn. Since only a cover front piece, and absence of any further relevant backstamps, it is difficult to ascertain if the U.S. E5 stamp was posted together from the Philippines or was the SD fee pre-paid (?) and the E5 was added on-arrival in US mainland for forward special delivery to the addressee.

Adding flavor to this postal history piece is that it was transmitted via DAGUPAN-MANILA RPO South making it a true gem. A hybrid of railway postal history and special delivery.