



PHILIPPINES
from the D.J.J. Luteria Collection

Introduction of Special Delivery service and Early usage **Forerunner issues**

Special Delivery – Official Use

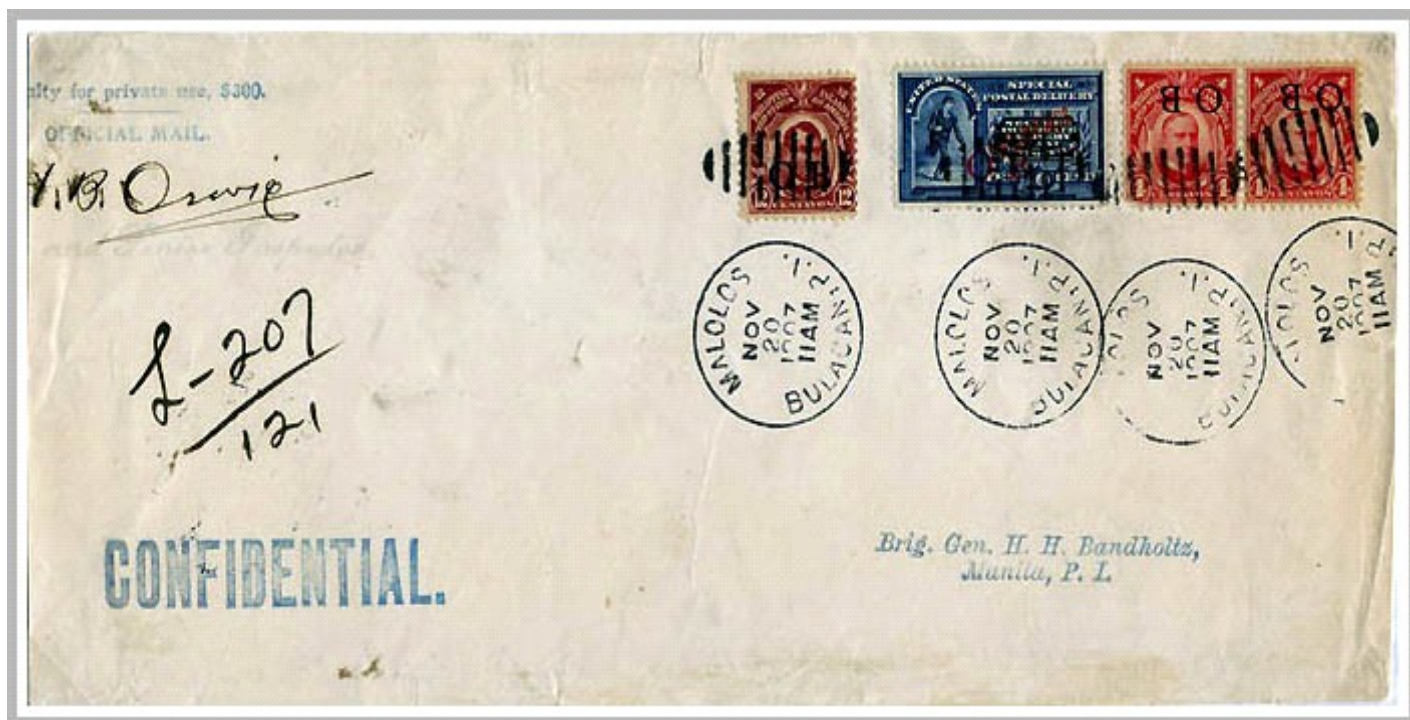
O.B. overprint (Red) on E1

1901. Special delivery service was extended for official use of both civilian government and military agencies in the Philippine Islands. The E1 forerunner issue (Scott No. U.S. E5) machine-overprinted 'PHILIPPINES' (red) received another overprinting, likewise in red, with letters 'O.B.' The stamps were part of the "Bandholtz" series.

Series of 1901



10c Special Delivery
50 Pieces



20 NOVEMBER 1907: MALOLOS, BULACAN to MANILA

Constabulary official mail via Special Delivery, fee paid with red OB on 1901 issue. The 10 times weight postage paid using 1906 "PHILIPPINE ISLANDS" 4c x 2 McKinley and 12c Lincoln with black OB.