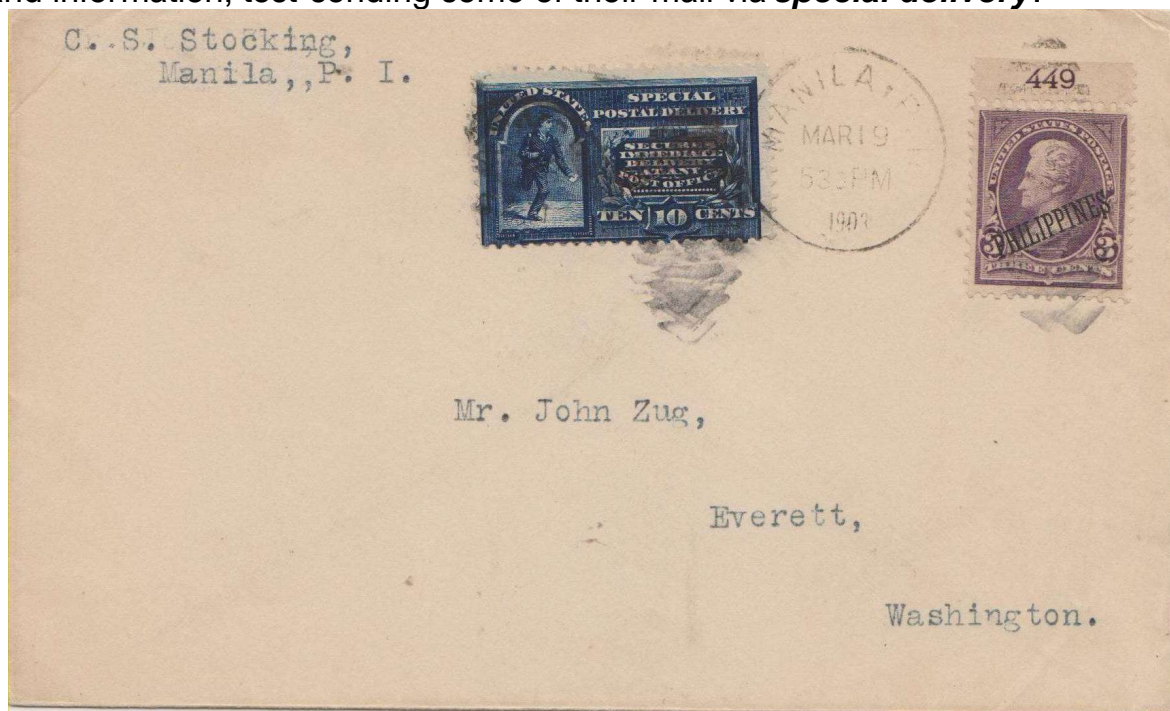




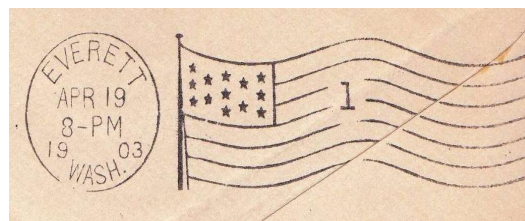
**PHILIPPINES**  
from the D.J.J. Luter Collection

## Introduction of Special Delivery service and Early usage *Forerunner issues*

During the early 1900's, a select group of mailers, most likely *collector enthusiasts and philatelists*, immediately took keen interest in the new Special Delivery service that was available on the islands. They corresponded eagerly with their colleagues and exchanged news and information, test-sending some of their mail via **special delivery**.



(From the D.J.J. Luter Philatelic Collection)



### **1903 March 19.** Outbound E1 usage from *Manila to Everett, Washington*

Correspondence between Charles S. Stocking (local resident American philatelist) and his friend Maj. John Zug Jr., U.S. Army Engineer corps.

#### **Route taken:**

Origin	Date PMK	Destination	Date Received
Manila	Mar 19 (THU) 5:30 PM	Tacoma, WA	Apr 19 (SUN) / 1 PM
Tacoma, WA	<i>forwarded</i>	Everett, WA	Apr 19 (SUN) / 8 PM

*Note: Maj. Zug was a distinguished U.S. Army engineer who travelled with the troops in Cuba, Puerto Rico, the Philippines, Guam, China and Japan. He was also a noted U.S. possessions stamp collector.*