

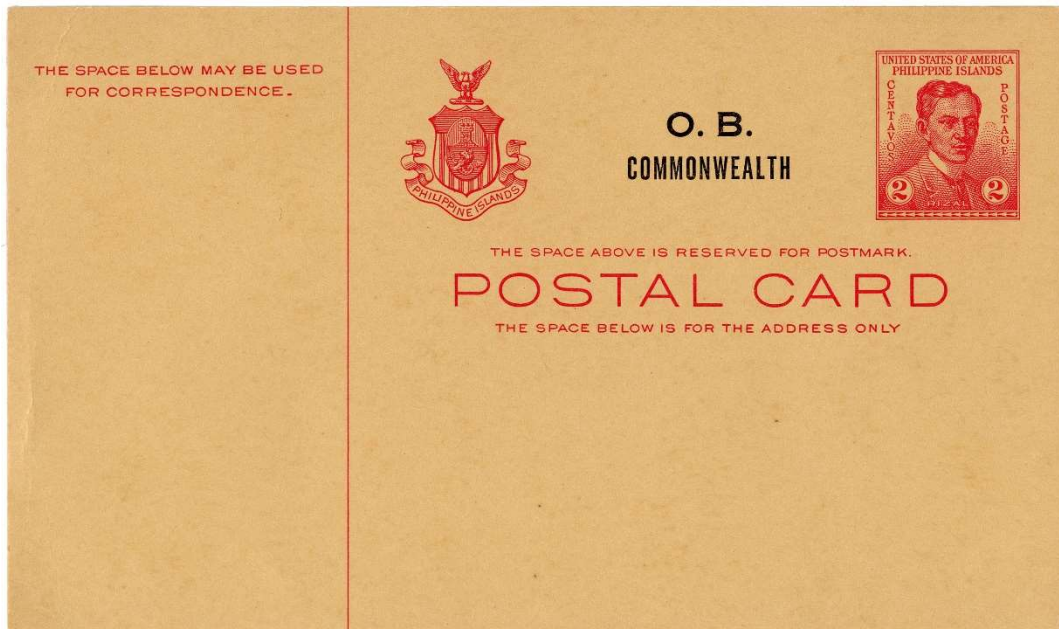
ISSUED 1936 - 1941

Scott #UZ5 UPSS #OS5

**2 Centavos Rizal, Official Business.** Engraved and overprinted by the U.S. Bureau of Engraving and Printing, Washington, D.C.. The overprinted "O.B." is 3.25 mm high.

The cards were issued in September 1941.

Quantity issued: 104,100 cards.



Mint card on **canary** card stock. The card stock used varies from canary to buff color. The cards exist with normal as well as short dividing line.

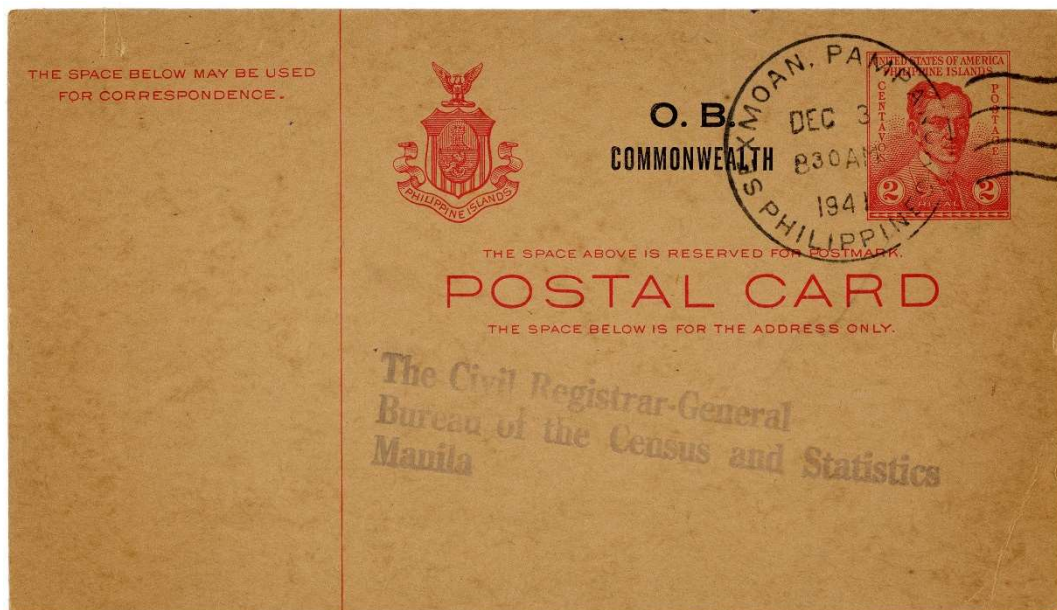


Manila 11 September 1941, to Oton, Iloilo. Oton receiving cancel on the front. Official usage of this card. Buff card stock.

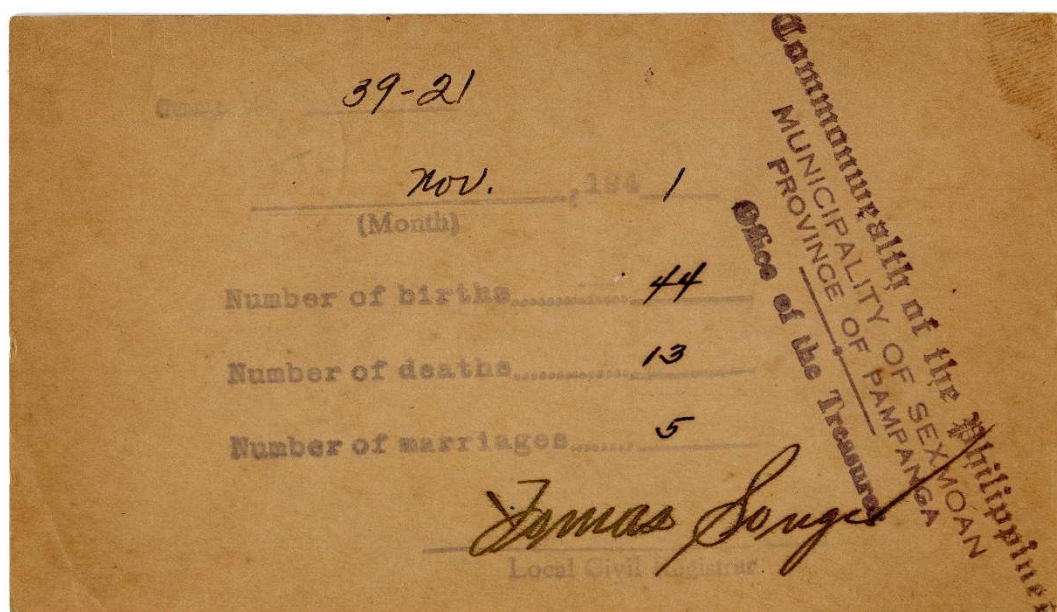
**Scarce usage of the card without link to statistical surveys. Earliest reported usage of this card.**

ISSUED 1936 - 1941

Scott #UZ5 UPSS #OS5



Sexmoan, Pampanga 3 December 1941, to Manila.  
Buff card stock.

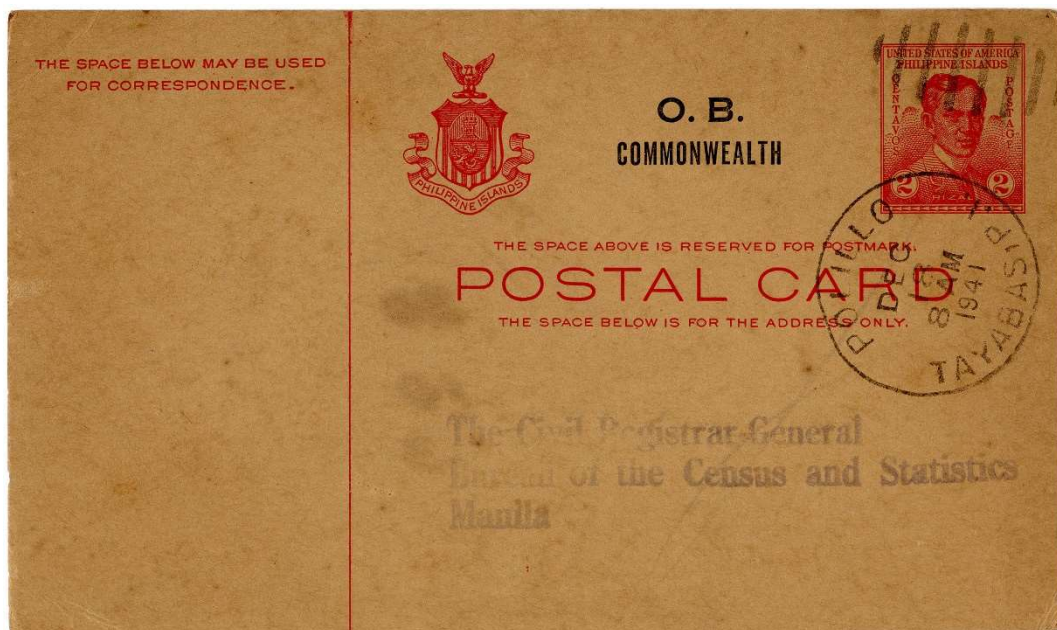


Official usage of this card.  
Most of these cards were used to collect statistical data on births, deaths and marriages.  
The cards were often stored for a long time under poor climatic conditions.

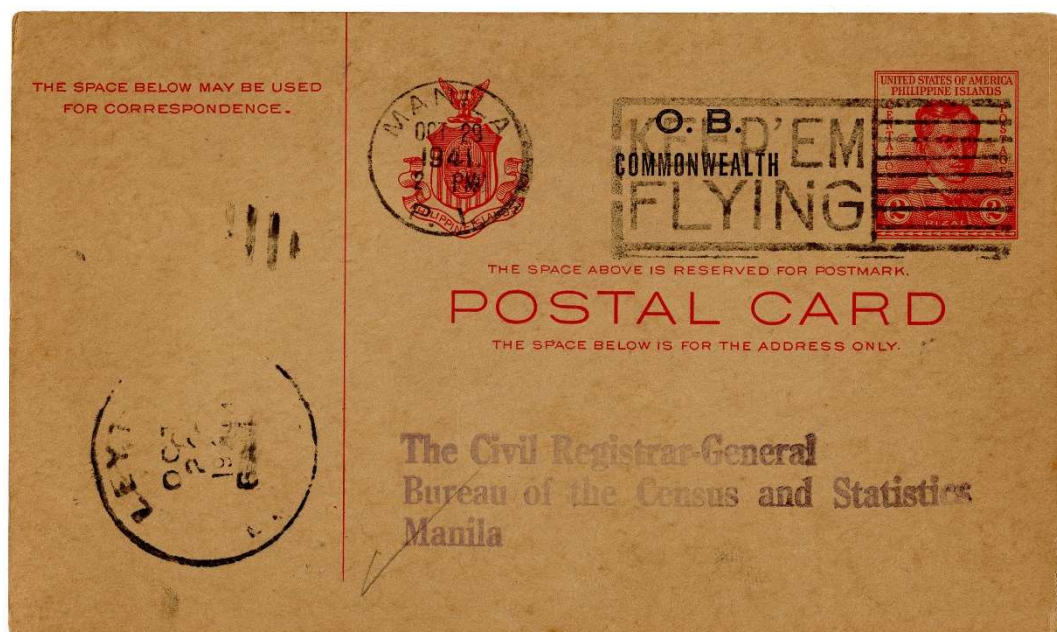


ISSUED 1936 - 1941

Scott #UZ5 UPSS #OS5



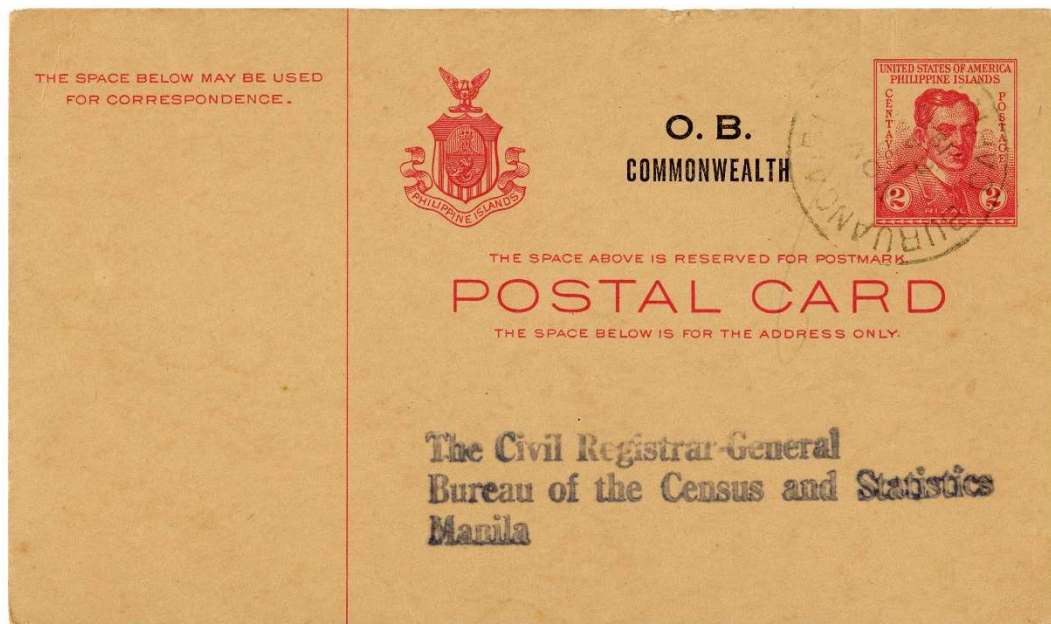
Polillo, Tayabas 18 December 1941, to Manila. Very late official usage of this card.  
Buff card stock.



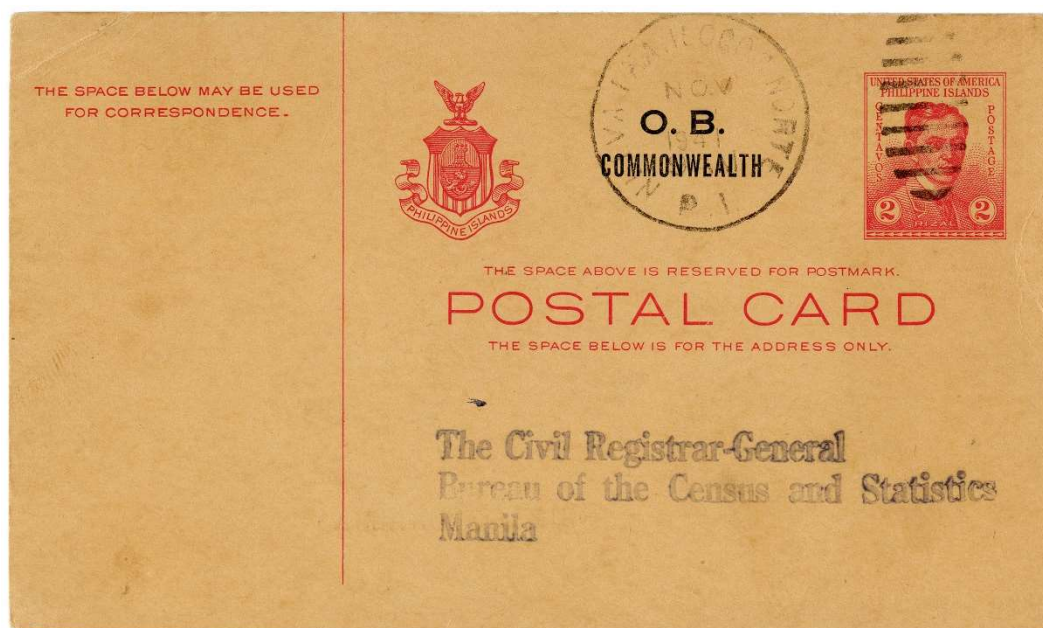
Kananga, Leyte October 1941, to Manila. Manila receiving cancel on the front Official usage of this card.  
Buff card stock with short dividing line.

ISSUED 1936 - 1941

Scott #UZ5 UPSS #OS5



Buruanga, Capiz 10 November 1941, to Manila. Official usage of this card.  
Canary card stock.



Nueva Era, Ilocos Norte November 1941, to Manila. Official usage of this card.  
Canary card stock with short dividing line.