

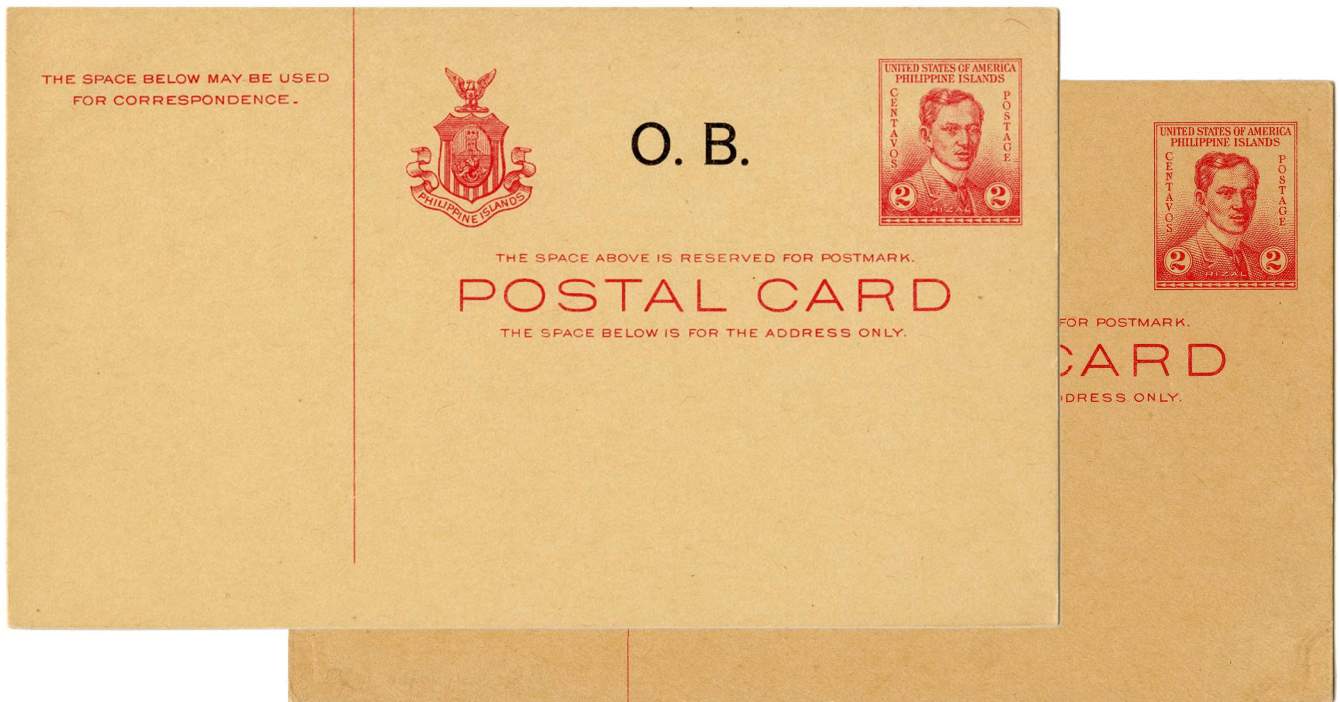
ISSUED 1936 - 1941

Scott #UZ2 UPSS #OS2

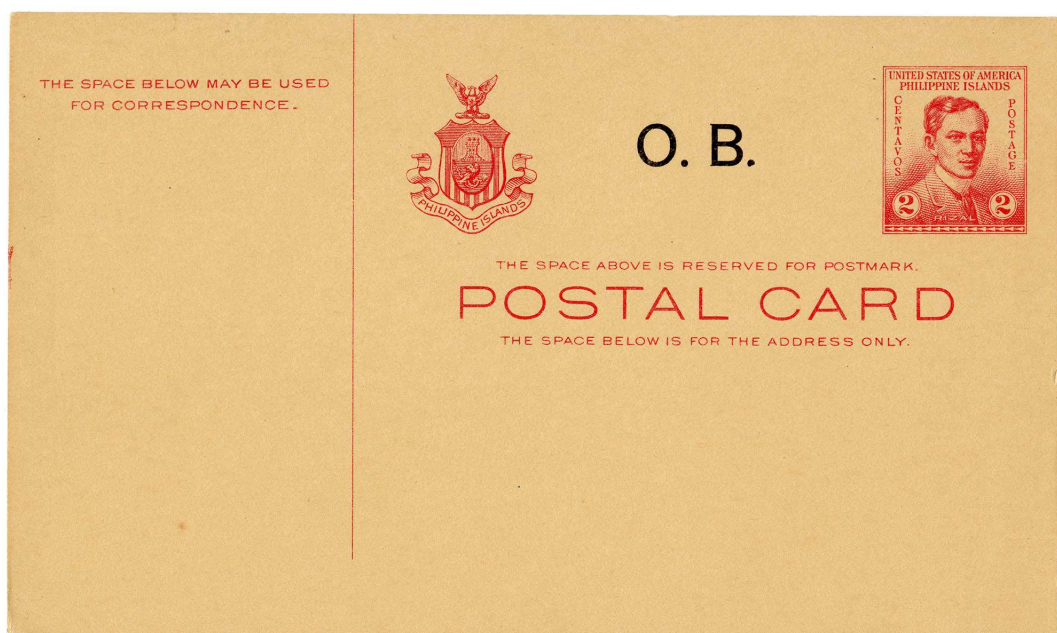
2 Centavos Rizal, Official Business. Engraved and overprinted by the U.S. Bureau of Engraving and Printing, Washington, D.C..

The cards were issued in March 1936.

Quantity issued: 16,000 cards.



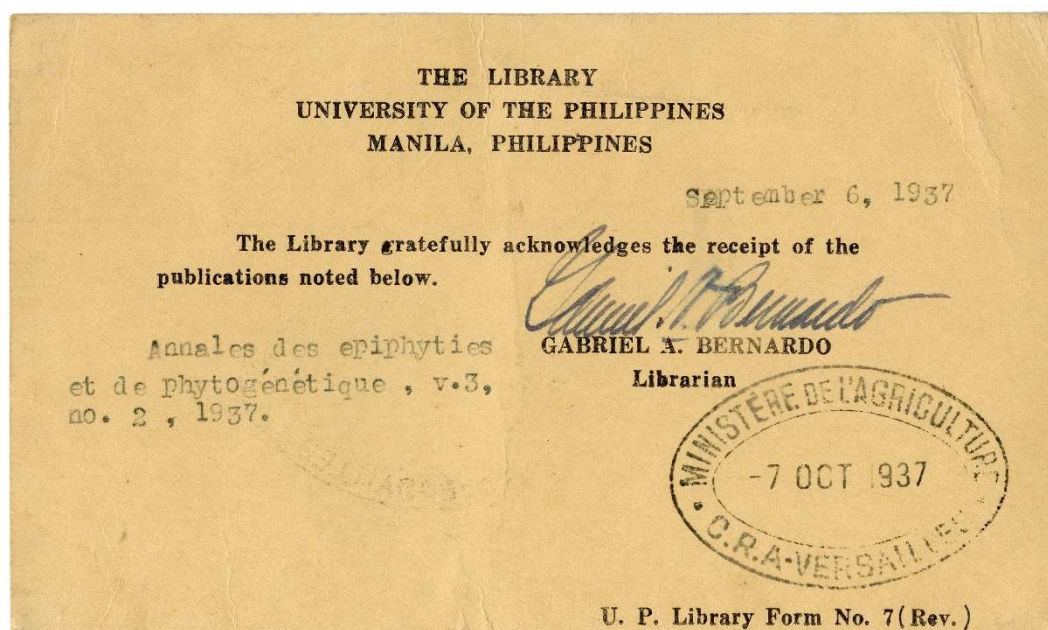
Mint cards, the card stock used varies from canary to buff color.
The cards exist with normal as well as short dividing line.



Mint card, on canary card stock. It shows a plate marking visible on middle part of left edge.



Manila 10 September 1937, to Versailles, French Republic.
An official stamp at 4 Centavos was added to the canary card.



Official usage of this card.