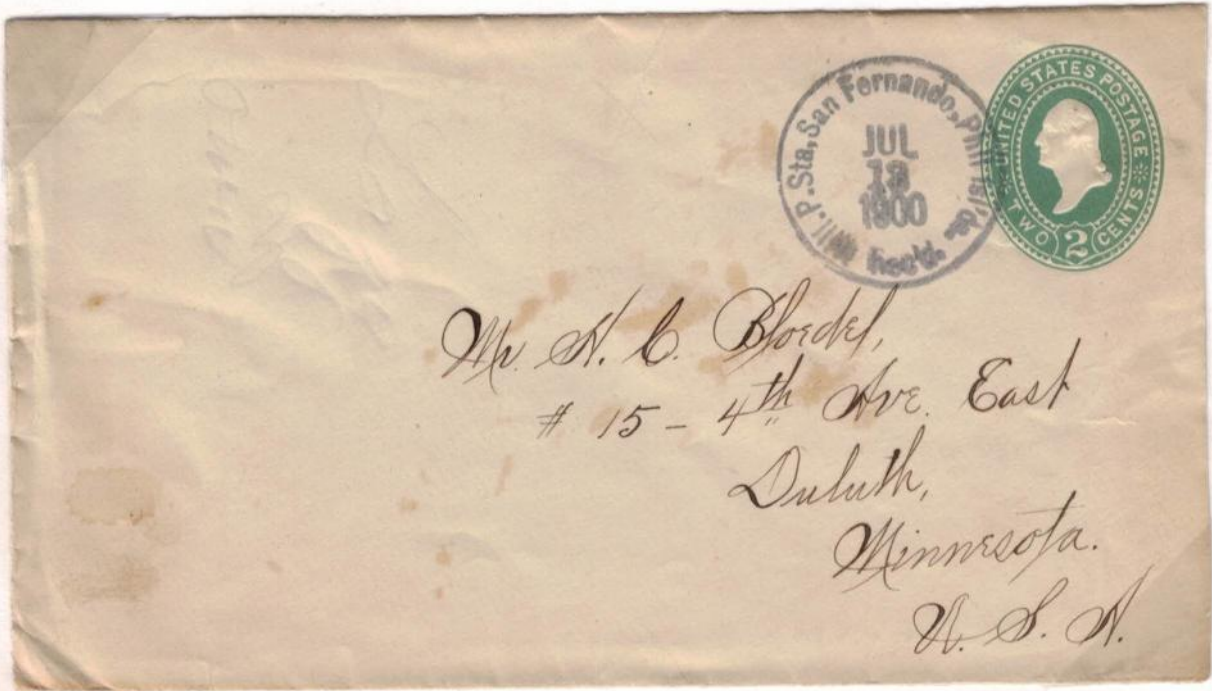


PHILIPPINES
Luzon

Mil Sta. San Fernando
27 February 1900
13 July 1900



The San Fernando receiving mark is not recorded in the literature. Above is the discovery example used as a despatch marking on an outbound letter. The typical military station 4-line registration marking was issued to San Fernando, but examples of registered mail were unknown until recent years. Only four such covers have been recorded to date, of which the above is the latest known.