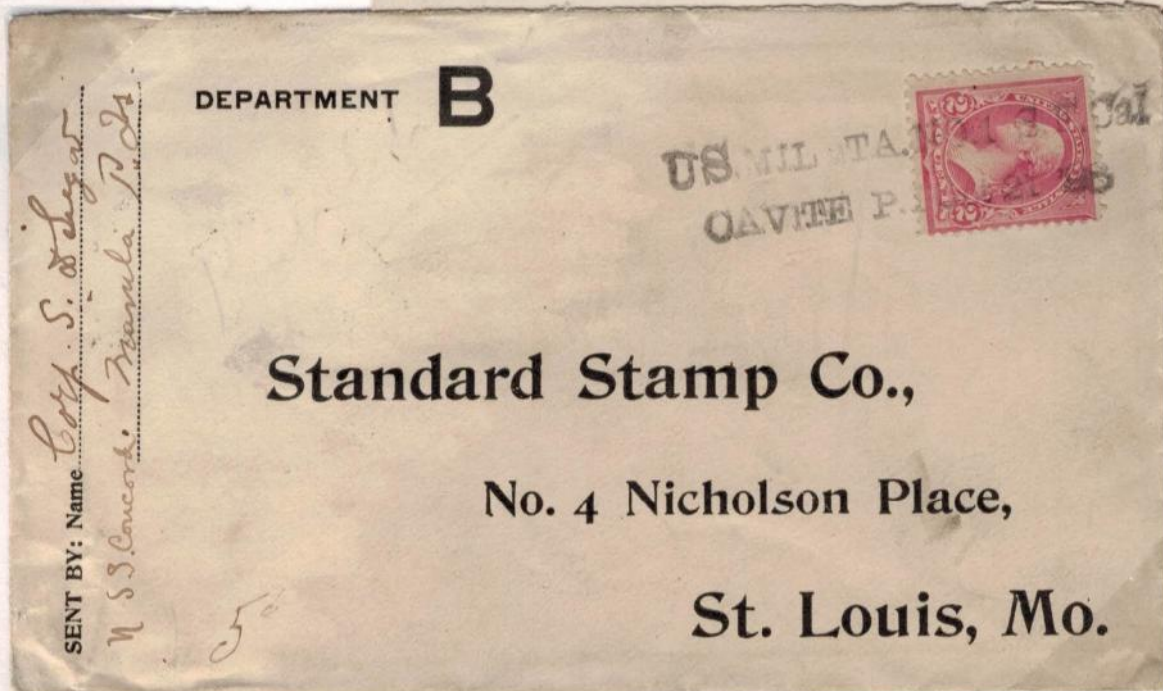
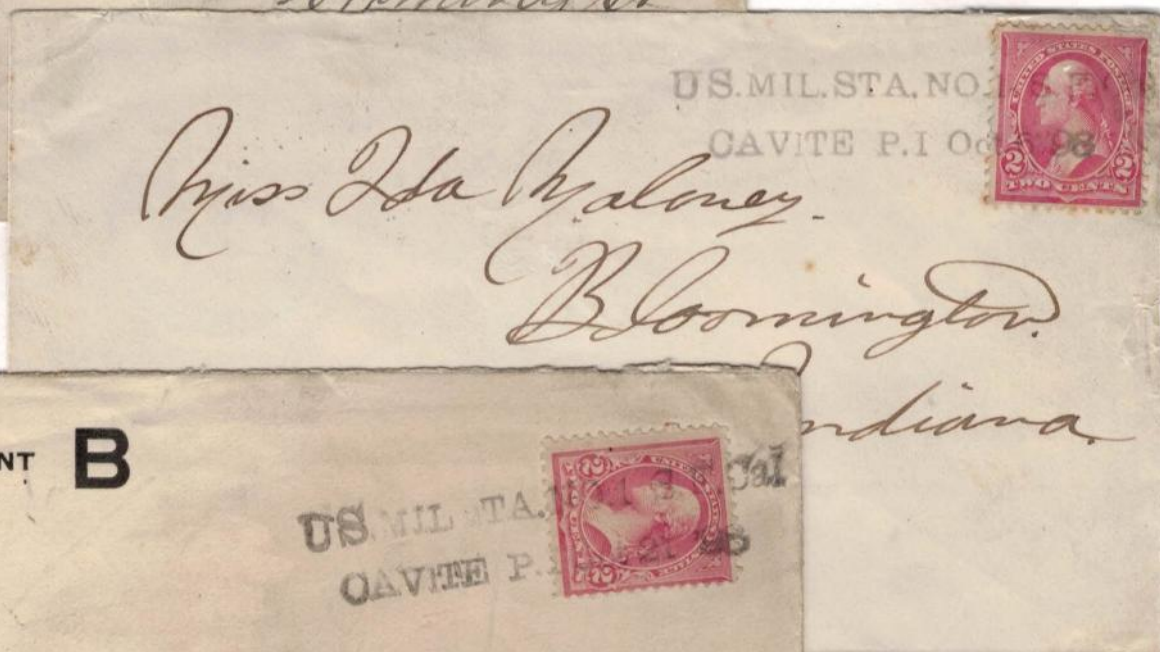


PHILIPPINES
Luzon

U.S. Mil. Sta. No. 1 Cavite
12 September 1898
6 October 1898
21 October 1898



After the Philippine Station post office was moved to Manila, it turned out that Cavite was handling sufficient mail to warrant restoration of a postal facility. As a result, a new 2-line handstamp was introduced. Postmarks of this type are recorded used from 7 September to 8 November 1898. Note the variations in the marking: the month is spelled in all capital letters on the top cover, but in upper and lower case letters on the middle and bottom ones. The third example shows lower case "s" in "sTA." (Perhaps the capital letter fell out and could not be replaced.)