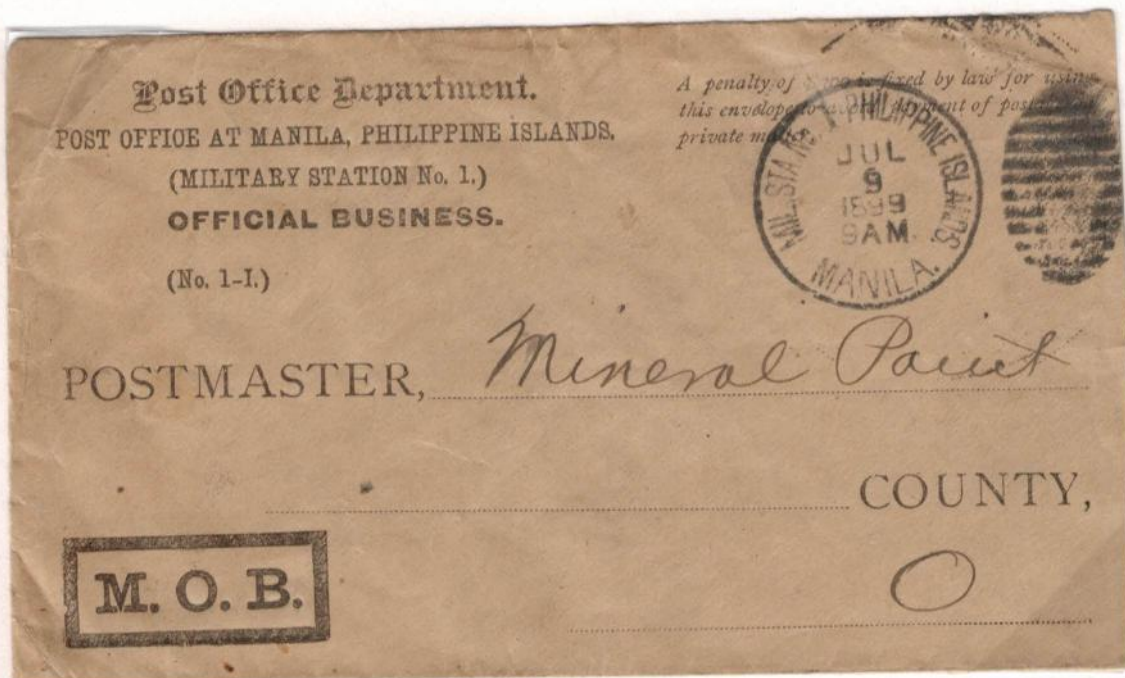


PHILIPPINES  
Luzon

Mil. Sta. No. 1 Manila  
9 July 1899  
12 September 1899



Two types of steel duplex devices were provided in 1899. The first, somewhat larger in size and with the town name at the bottom, is recorded used from 20 March 1899 to 22 August 1900 at MPS No.1. The second, smaller version has "Phil. Isl'ds." at the bottom and is recorded used from 5 December 1898 to 25 August 1900.