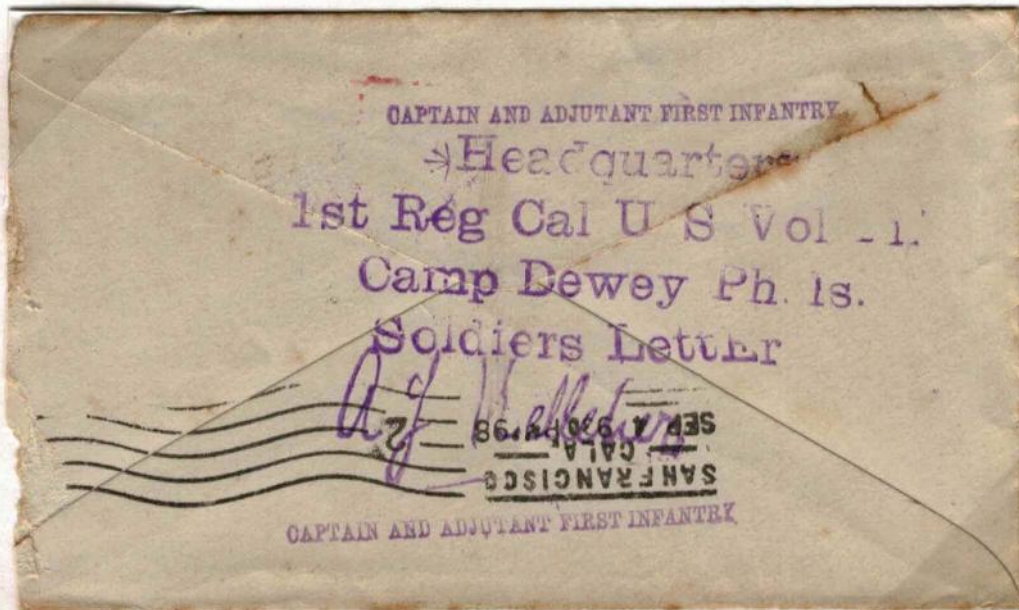


PHILIPPINES
Luzon

Philippine Station
6 August 1898



A few days after the post office was opened at Cavite, a sub-station was opened at Camp Dewey nearby, the primary encampment for the U.S. forces (Goodale). No special marking was used on the Camp Dewey mail, which was delivered to Cavite for cancellation. However, the location was provided in a soldier's letter endorsement applied by the 1st Regiment of California Volunteers.