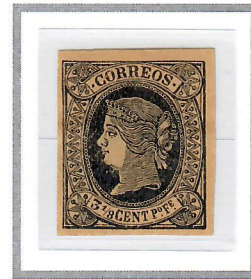
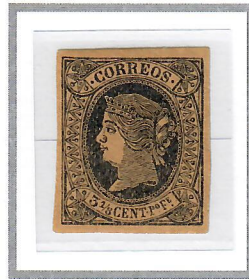
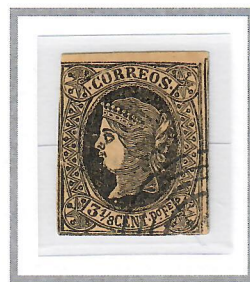


JANUARY 1, 1864

3-1/8 CENTIMOS DE PESO FUERTE



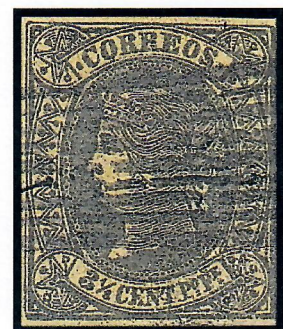
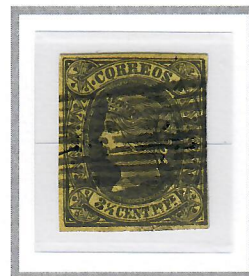
Gooding #21F3. Miguel Segui Forgery. Typographed on medium yellowish paper. The second 'R' in 'CORREOS' is larger than the first. The bottom pearl on the top right corner is lacking shading. The eyebrow is formed by an even width line. The white curved line at the neckline is cut too wide. There is a break in second line from the top at the bottom left corner, where it does not touch the right side of the star. **Francisco Graus (Page 34)**



Gooding #21F4. Most of the stalked pearls in the side-frames touch the inner or outer curved lines of the frame. The second 'R' in 'CORREOS' is broken just below the top loop. The curved lines of shading round the star-ornament in top right corner of the stamp is incomplete and missing a few lines. The eyelid is very narrow, giving the appearance of a much larger eye than the original. The lettering in 'CENT' is thinner than the genuine, giving appearance of taller letters. The 'o' in 'Po' is shaped more like a square. The chain pattern, round the outer edge of the dark central oval, is small and often broken.



ONLY RECORDED COPIES



Gooding #21F5. Very crude Perforated forgery. Very blotchy due to over-inking around stars in upper right, bottom left and bottom right corners. Black horizontal scratch line cutting across 'ORR' or 'CORREOS'. Pearl on upper right corner star is broken, appearing like a hook. No period under 'o' of 'Po' and 'e' of 'Fe'.

Gooding #21F8. A rather crude forgery on yellow paper. 'C' of 'CORREOS' is almost closed and nearly resembles an 'O'. The lines surrounding the star in each corner are broken. The numbers and letters in the bottom value tablet are crude. The extended circles on both sides are mostly filled in.