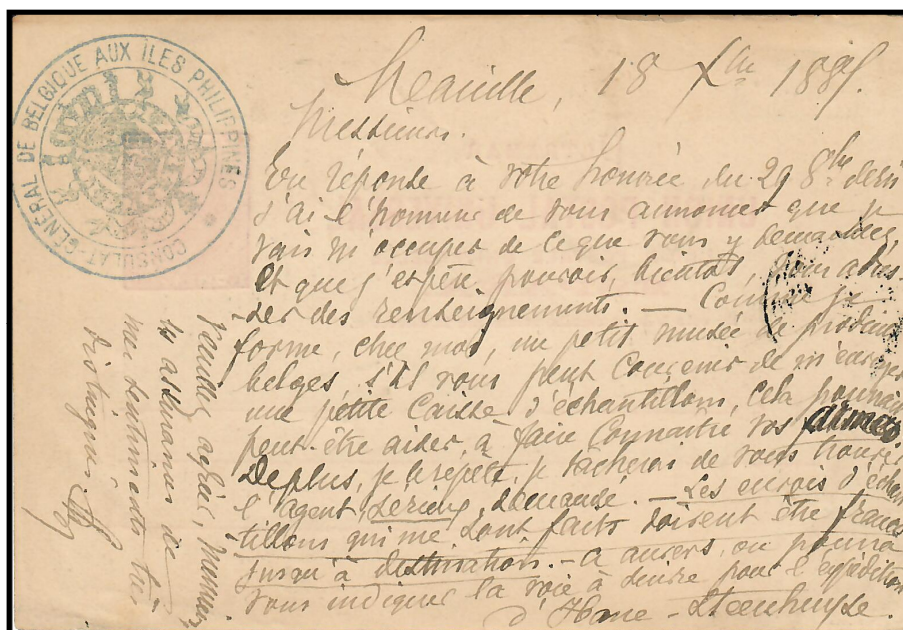


BELGIUM CONSULATE

BELGIUM CONSULATE CIRCULAR HANDSTAMP



18 January 1886 – Postal Card from Manila to Liege, Belgium

Liege indistinct Receiving Circular Date Stamp on Front

BELGIUM CONSULATE

CIRCULAR EMBASSY SEAL



14 March 1888 – Cover from Manila to Brussels, Belgium, via Marseille

8c stamp paying Single Weight Overseas Rate to UPU Country

Paquebot (28 March 1888) Cancellation on cover front

Brussels (22 April 1888) Receiving Circular Date Backstamp with Embassy Logo on Reverse

BELGIUM CONSULATE

CIRCULAR EMBASSY SEAL



14 March 1888 – Cover from Manila to Brussels, Belgium, via Marseille

8c stamp paying Single Weight Overseas Rate to UPU Country

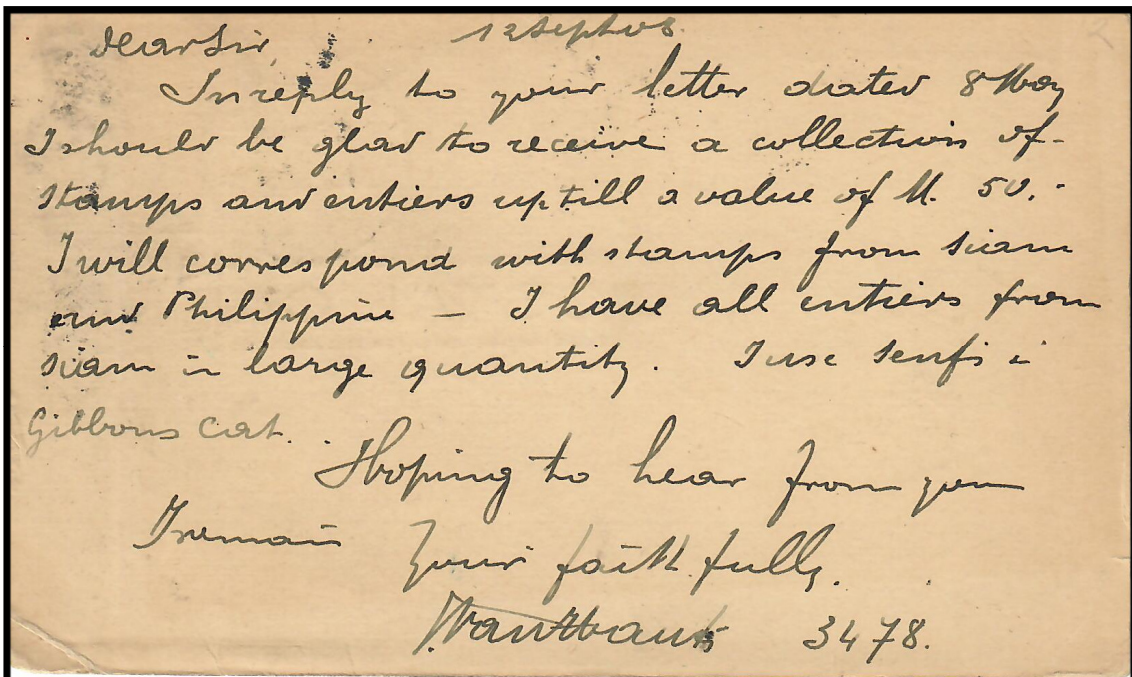
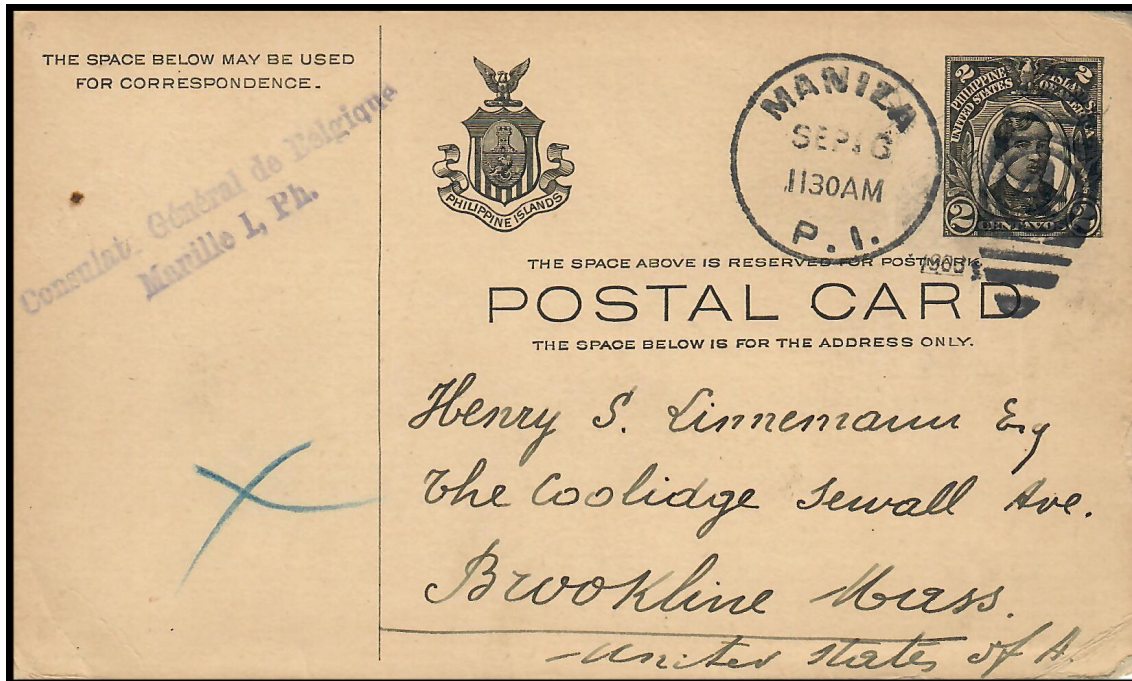
Paquebot (28 March 1888) Cancellation on cover front

Brussels (22 April 1888) Receiving Circular Date Backstamp with Embassy Logo on Reverse

BELGIUM CONSULATE

TWO SINGLE LINED HANDSTAMP

Consulate Général de Belgique
Manille I, Ph.



16 September 1908 – Postal Card from Manila to Brookline, Massachusetts, USA
Manila (No. 4) Departure Duplex Cancellation
Belgian Consulate General Handstamp on left front

BELGIUM CONSULATE

CIRCULAR CONSULATE CIRCULAR HANDSTAMP



20 September 1940 – Censor Cover from Manila to Hong Kong, via Clipper

Stamps Killer Foreign Mail Section Cancellations

Foreign Mail Section (20 September 1940) Circular Date Backstamp

Belgian Consulate General Circular Handstamp on top left of cover front