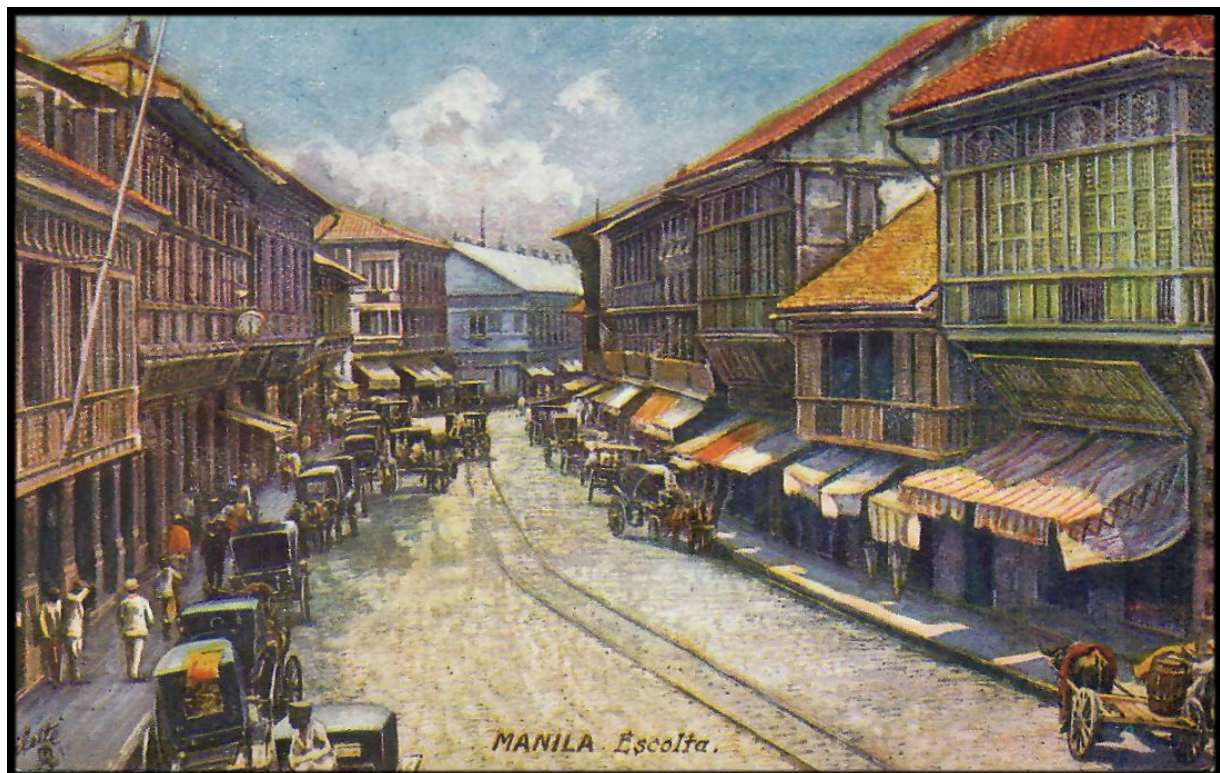


ADOLFO RICHTER & COMPANY EL SIGLO XIX

Adolfo Richter, of German descent, was a resident in the Philippines from at least the early 1870s. Earliest records show that he established Adolfo Richter & Company from 1882. The company comprised a series of retail shops in the Philippines with the main office located in Escolta, Manila, and branches in Cebu, Nueva Caceres, Camarines Sur and Iloilo. A further establishment, El Siglo XIX, appears from around 1888. Products included hats, shoes, boots, saddles, spurs, sewing machines amongst other items. During the early part of the 20th century, they also stocked military supplies such as caps, insignias and other accessories. In 1918, Brias Roxas & Company was established through the acquisition and merger of Adolfo Richter & Company and Alfredo Roensch & Company.



Adolfo Richter (Fabrica de Sombreros) - First Building on Right

THE LEADING MILITARY-
SUPPLIES HOUSE IN THE PHILIPPINES
Old No. 15 Escolta New No. 57

Has always a full stock of the following lines:

Felt - Hats, Straw - Hats, latest styles, Shoes, Boots for
Gentlemen, American and German made, Saddles, American
and English ones, Sewing Machines, Spurs etc.

Adolfo Richter & Co.

Adolfo Richter & Co Advertisements (circa 1902)

ADOLFO RICHTER & COMPANY

EL SIGLO XIX

Historical Timeline

1873 - 1877

Adolfo Richter, assistant to Adolfo Roensch, hat manufacturer, located at Escolta 21, Manila.

1879

Adolfo Richter, working for Adolfo Roensch as manager of the Iloilo branch. Bruno Richter also listed as working as an assistant for Adolfo Roensch in Manila.

1882

Adolfo Richter, hat manufacturer, Escolta 15, Manila. Adolfo Richter (proprietor), assisted by: Bruno Richter and Federico Richter.

1888 - 1889

Adolfo Richter, hat manufacturer, Escolta 15. Adolfo Bruno Richter (proprietor) and Federico Richter (assistant).

El Siglo XIX, Almacen de Tejidos y Novedades de Europa (Fabric and European News Store), Escolta 33. Adolfo Bruno Richter (proprietor) and Reinaldo Richter (proprietor), assisted by: M Sluch, A Arantegin and M Vicente.

1892

Adolfo Richter & Co, hat manufacturer, Escolta 15. Adolfo Bruno Richter (proprietor), assisted by: Federico Richter, Rainfold Richter, Ricardo Walther and Salvador Rebolledo.

El Siglo XIX, Almacen de Tejidos y Novedades de Europa, Escolta 24. Adolfo Bruno Richter (proprietor) and Reinaldo Richter (proprietor), assisted by: Federico Richter, M. Lluch, M. Vicente, R. Walther, R. Ortiz, M. Miranda, S. Reboullido, G. Roesseler and M. Fuster.

Bazar El Siglo XIX, Cebu. Emilio Richter (manager).

1894

Adolfo Richter & Co, La Sombreria, Escolta 15. Adolfo Bruno Richter (proprietor), Reinaldo Richter (proprietor) and Federico Richter (proprietor), assisted by: Julio Camps, Ricardo Walther, Arturo (Arthur) Ruebe, Manuel Fuster, Ricardo Hermida, and Juan Braconz. It also shows Julio Roseler managing a branch in Nueva Caceres, Camarines Sur.

El Siglo XIX, Tienda de Novedades (News Store), Escolta 15. Moves into the same premises as Adolfo Richter & Co.

Bazar El Siglo XIX, Cebu. Miguel Lluch (manager), assisted by S Rebolledo.

1898 - 1899

Adolfo Richter & Co, La Sombreria, Escolta 15. Adolfo Bruno Richter (proprietor), Reinaldo Richter (proprietor) and Federico Richter (proprietor), assisted by: Arturo (Arthur) Ruebe, Manuel Fuster, U Quesada, R Schleinitz, M Pavon, Berthold Aue, Arturo Wagner, and F Ocampo.

El Siglo XIX, Tienda de Novedades, Escolta 24. Moves to new premises.

Bazar El Siglo XIX, Cebu. P Hermoso (manager).

1902

Adolfo Richter & Co, Hat Store, Military Supply House, Escolta 15. Reinhold Richter (proprietor) and Friedrich Richter (proprietor), assisted by: Arthur Ruebe, Adolf Ruebe, Robert Schleinitz, Arthur Wagner, R Malnenda, A Malnenda, J Martinez, J Sison, W Kreher, M Braun, and M Garcia.

El Siglo XIX. Dry Good Store, Escolta 24.

Bazar El Siglo XIX, Cebu. P Hermoso (manager), F Ocampo (assistant).

ADOLFO RICHTER & COMPANY

EL SIGLO XIX

Historical Timeline



El Siglo XIX, Adolfo Richter & Co Advertisement (circa 1902)

1905

Adolfo Richter & Co, Hat Store, Military Supply House, Escolta 57. Reinhold Richter (proprietor, absent) and Friedrich Richter (proprietor), assisted by: Arthur Ruebe (signs per procurationem), Arthur Wagner, F Wenzel, C Hengstbach, G Ferraz, J Sison, W Krecher, M Braun, H Mengel, E Hernandez, and F M Gomez.

El Siglo XIX. Dry Good Store, Escolta 114.

Bazar El Siglo XIX, Cebu. P Hermoso (manager), assisted by: R Malnenda, A Malnenda and A Urtasun.

1908 - 1910

Adolfo Richter & Co, Hat Store, Military Supply House, Escolta 57. Reinhold Richter (proprietor, absent) and Friedrich Richter (proprietor, absent), Arthur Ruebe (manager), assisted by: Arthur Wagner (signs per procurationem), Ferd. Wenzel, Hans Mengel, Max. Geissler, Erich Schlack, Alfred Richter, Walter Ruebe, Gregorio Ferraz, Rafael Serrano, Francisco Pamies, and Jose Sison.

El Siglo XIX. Dry Good Store, Escolta 114.

Iloilo Branch – Eulogios Fernandez (signs per procurationem), Amaro Garcia, Santos Orozco

No mention of Bazar El Siglo XIX, Cebu.

1912

Adolfo Richter & Co, Hat Store, Military Supply House, Escolta 57. Reinhold Richter (proprietor, absent, member of firm), Arthur Ruebe (member of firm), Alfred Richter (member of firm), assisted by: Arthur Wagner (signs per procurationem at Cebu), Eulogio Hernandez (signs per procurationem at Iloilo), Walter Ruebe, Hans Schumann, Carl Preseber, Rafael Serrano, Antonio Villera, Gregorio Ferraz, Jose Sison, A Santos, and Salvador Thomas.

El Siglo XIX. Dry Good Store, Escolta 114.

Iloilo Branch – Eulogios Fernandez (signs per procurationem), Amaro Garcia, Santos Orozco

No mention of Bazar El Siglo XIX, Cebu.

1918

Adolfo Richter & Company (La Sombreria) and El Siglo XIX businesses were seized by the US Governor General on February 16, 1918 (as part of World War I) under the 'Trading with the Enemy Act' of October 6, 1917, which called for the sequestration of enemy property during hostilities. The businesses were sold on April 1, 1918, wherein El Siglo XIX was sold to Lorza and Lozano and La Sombreria to Enrique P Brias Roxas. Note: Brias Roxas & Company was established through the acquisition and merger of Adolfo Richter & Company (La Sombreria) and Alfredo Roensch & Company.

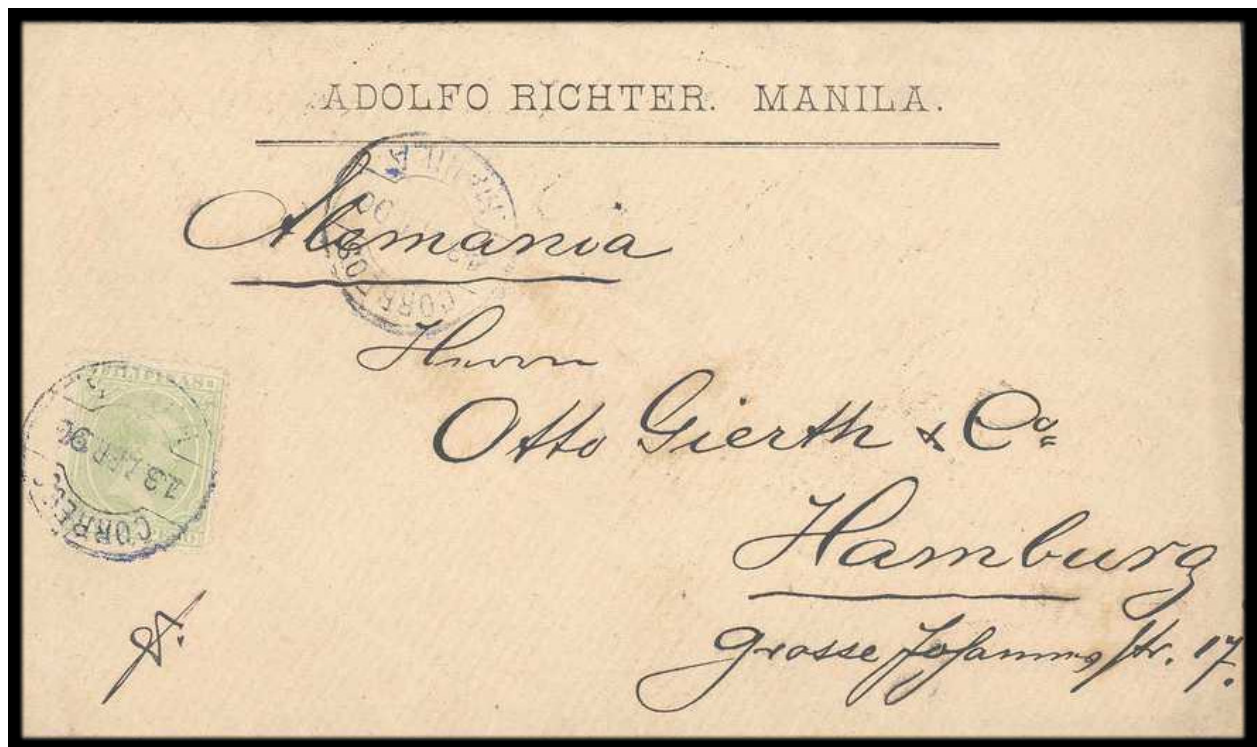
ADOLFO RICHTER & COMPANY

PRIVATELY PRINTED COVERS

PPC1: ADOLFO RICHTER. MANILA.



ADOLFO RICHTER. MANILA.



13 April 1890 - Cover from Manila to Hamburg, Germany

8c paying Single Weight Overseas Rate, cancelled with 'Correos - Manila' Circular Date Stamps

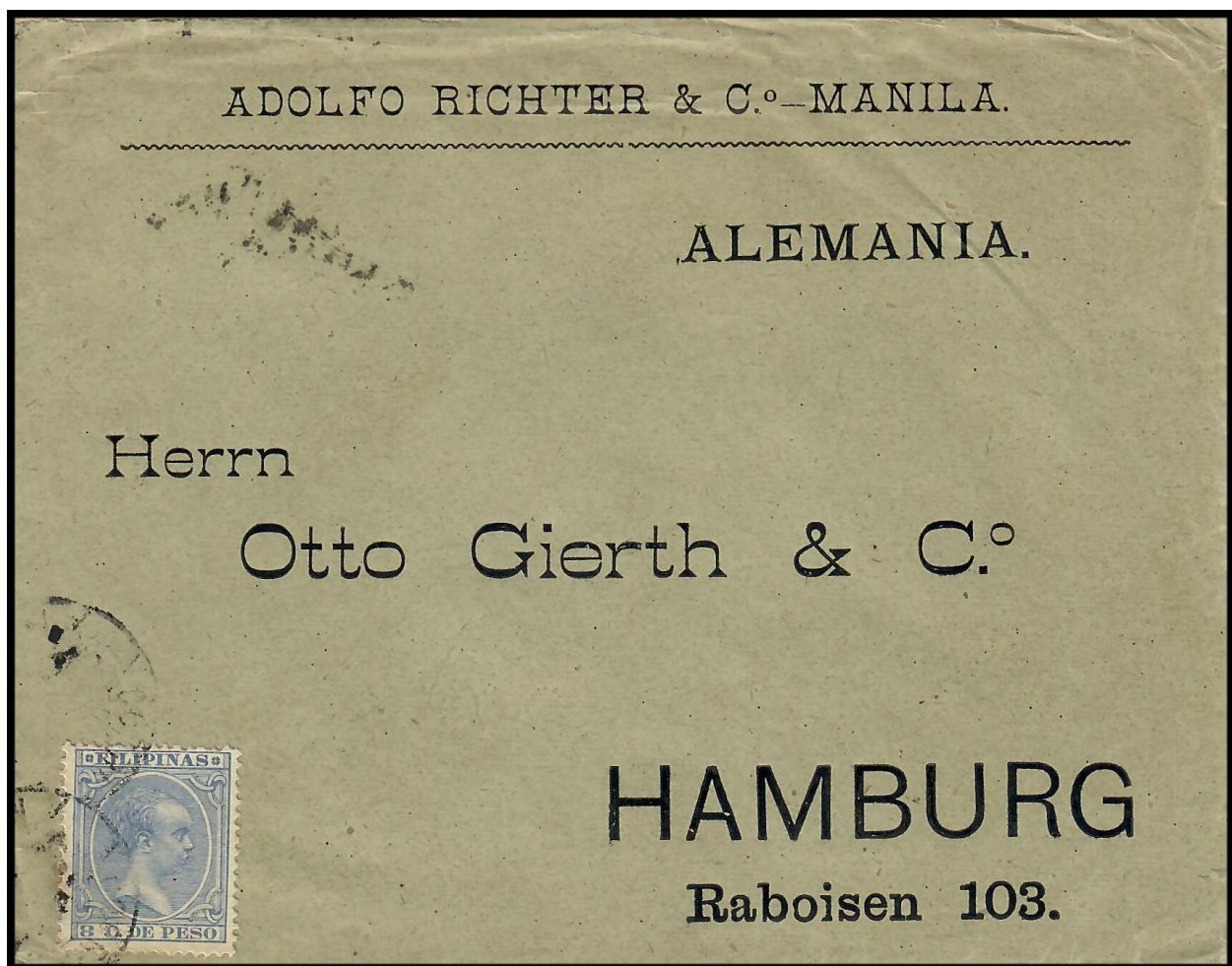
ADOLFO RICHTER & COMPANY

PRIVATELY PRINTED COVERS

PPC4: ADOLFO RICHTER & C.o – MANILA.



ADOLFO RICHTER & C.o – MANILA.



1892 - Cover from Manila to Hamburg, Germany on Pre-Printed Cover to Otto Gierth & Co
8c paying Single Weight Overseas Rate, cancelled with Indistinct 'Correos - Manila' Circular Date Stamps
25 September 1892 'Hamburg' Arrival Circular Dated Backstamp

ADOLFO RICHTER & COMPANY

PRIVATELY PRINTED COVERS

PPC2: ADOLFO RICHTER Y C.a – MANILA



ADOLFO RICHTER Y C.a – MANILA
CEBU - NUEVA CACERES.



23 February 1893 - Cover from Manila to Erfurt, Germany

8c paying Single Weight Overseas Rate, cancelled with 'Correos - Manila' Circular Date Stamps

28 March 1893 'Erfurt' Arrival Circular Dated Backstamp

ADOLFO RICHTER & COMPANY

FOREIGN INBOUND COVER

SWITZERLAND ORIGINATING



22 August 1895 - Insured Parcel Card from Switzerland to Manila, via Bremen

Addressed to Adolfo Richter y Cia, Manille, Isles Philippines

Stamps with 'Chaux de Fonds' Departure Circular Date Cancels

24 August 1895 'Frankfurt' and 25 August 1895 'Bremen' (25 August 1895) Transit Cancels on Reverse

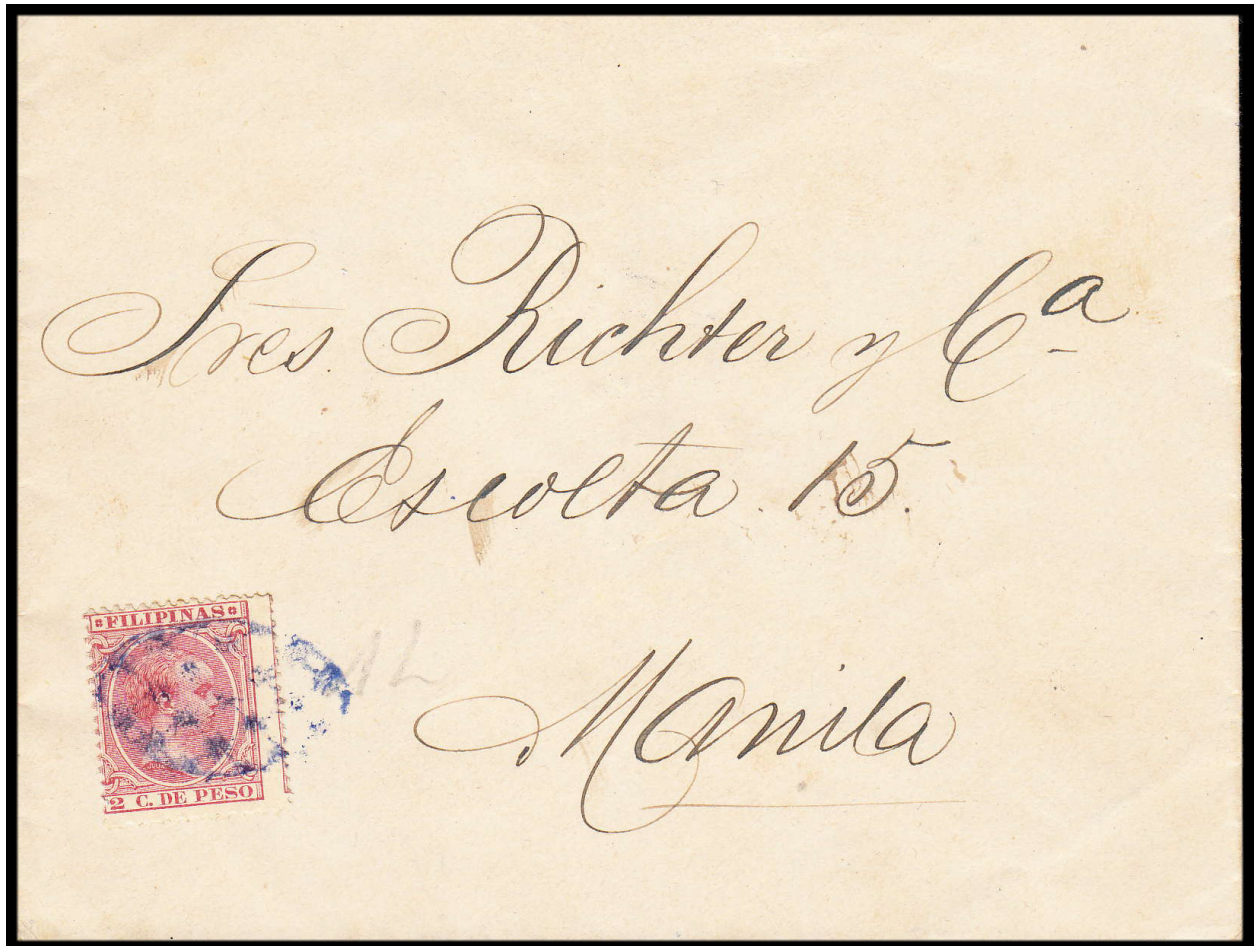
(Heinrich Köhler Auction – 24 September 2019)

ADOLFO RICHTER & COMPANY

COVER ADDRESSED TO RICHTER Y CA

ESCOLTA 15

MANILA



Circa 1895 - Domestic Cover Addressed to Richter y Ca, Manila
Most Likely Non-Manila Originating Cover

2c paying Single Weight Domestic Rate, with Blue Parrilla Cancellation

5 January 1895 'Correos-Manila' Arrival Circular Dated Backstamps

Boxed 'Comunicaciones/Admin Pral Manila/Cartera Central' (Manila PO Central Sorting Section) on Reverse

ADOLFO RICHTER & COMPANY

COVER ADDRESSED TO ADOLFO RICHTER

ESCOLTA 15

MANILA



1895 - Domestic Cover to Adolfo Richter, Manila
Indistinct Originating Circular Date Stamp

2c paying Single Weight Domestic Rate, cancelled with Indistinct 'Correos' Circular Date Stamp

19 December 1895 'Correos-Manila' Arrival Circular Dated Backstamp

Boxed 'Comunicaciones/Admin Pral Manila/Cartera Central' (Manila PO Central Sorting Section) on Reverse

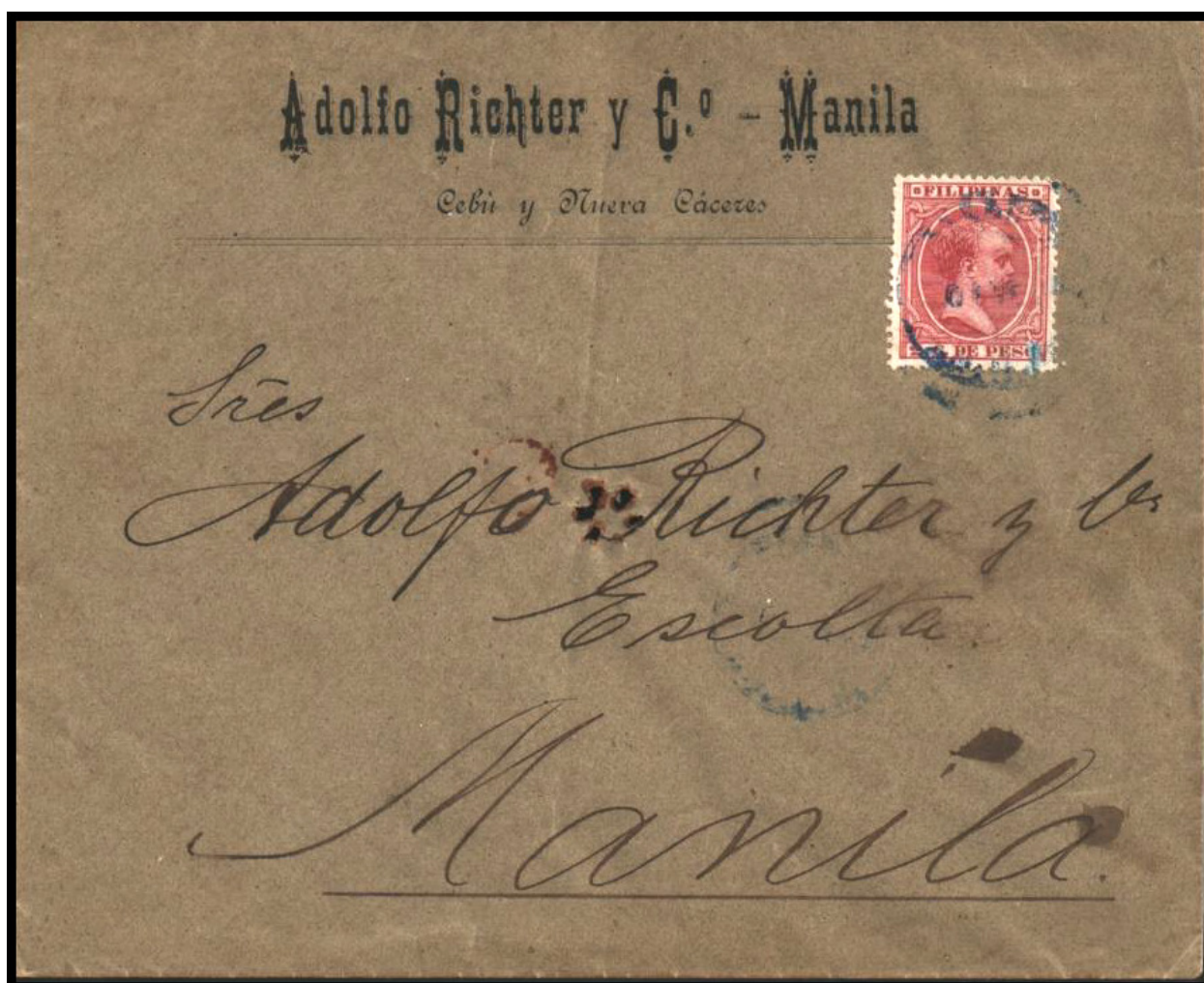
ADOLFO RICHTER & COMPANY

PRIVATELY PRINTED COVERS

PPC3: Adolfo Richter y C.o – Manila



Adolfo Richter y C.o – Manila
Cebú y Nueva Cáceres



1896 - Domestic Cover Addressed to Adolfo Richter and Company, Manila
Most Likely Non-Manila Originating Cover

2c paying Single Weight Domestic Rate, cancelled with Indistinct 'Correos' Circular Date Stamp

20 January 1896 'Correos - Manila' Arrival Circular Dated Backstamp

Boxed 'Comunicaciones/Admin Pral Manila/Cartera Central' (Manila PO Central Sorting Section) on Reverse

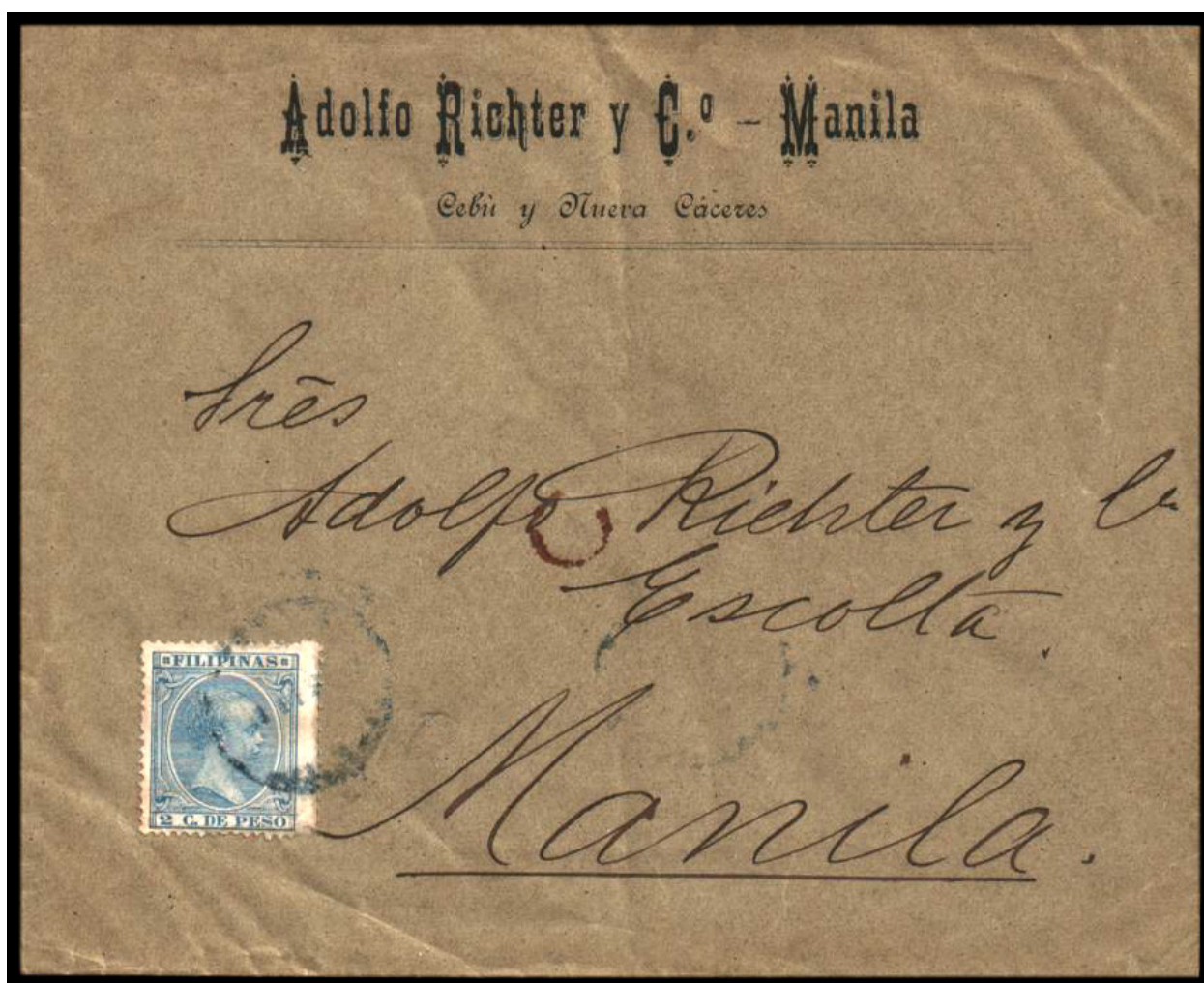
ADOLFO RICHTER & COMPANY

PRIVATELY PRINTED COVERS

PPC3: Adolfo Richter y C.o – Manila



Adolfo Richter y C.o – Manila
Cebú y Nueva Cáceres



1896 - Domestic Cover Addressed to Adolfo Richter and Company, Manila
Most Likely Non-Manila Originating Cover

2c paying Single Weight Domestic Rate, cancelled with Indistinct 'Correos' Circular Date Stamp

4 February 1896 'Correos - Manila' Arrival Circular Dated Backstamp

Boxed 'Comunicaciones/Admin Pral Manila/Cartera Central' (Manila PO Central Sorting Section) on Reverse

ADOLFO RICHTER & COMPANY
EL SIGLO XIX



Manila
Circulating
Cover

2c paying
Single Weight
Domestic
Rate

7 February
1896 'Correos
- Manila'
Circular Date
Stamp

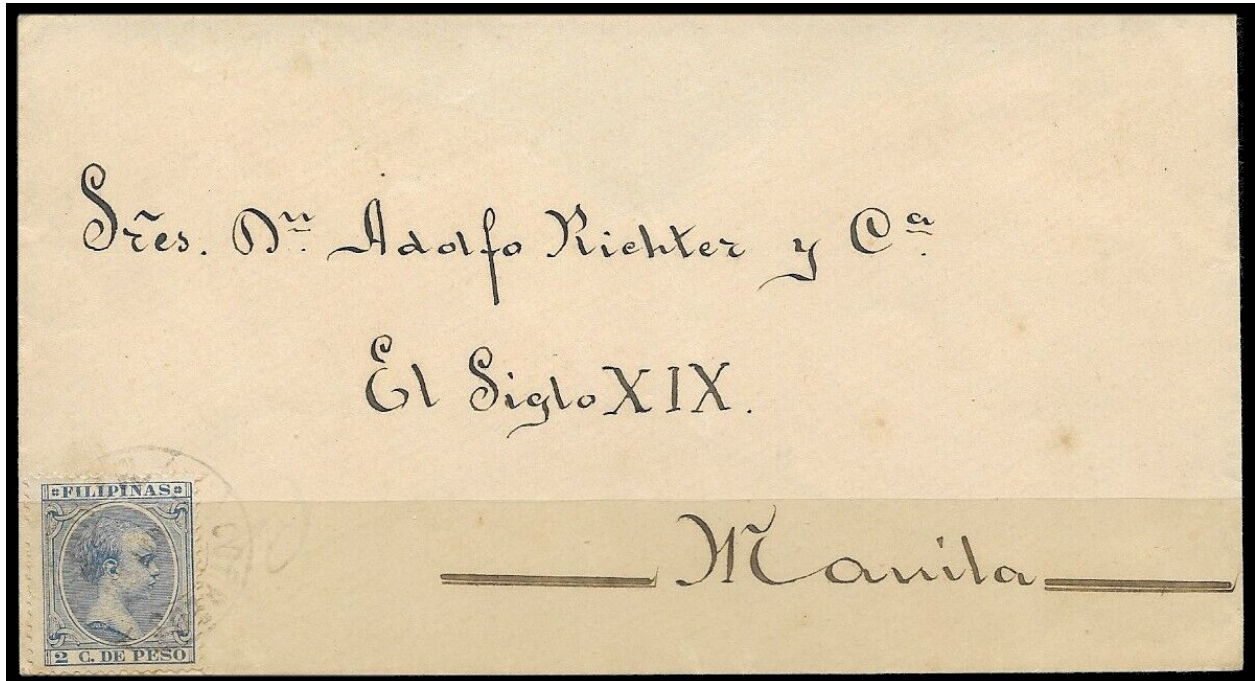


13 March 1896 - Cover Addressed to El Siglo XIX, Escolta

1/8c paying Single Domestic Circular (Printed Matter) Rate. Cancelled with 'Correos-Manila' Circular Date Stamps
Boxed 'Comunicaciones/Admin Pral Manila/Cartera Central' (Manila PO Central Sorting Section) on Reverse

ADOLFO RICHTER & COMPANY

EL SIGLO XIX



Circa 1896 – Manila Circulating Cover Addressed to Adolfo Richter y Ca, El Siglo XIX, Escolta
2c paying Single Domestic Rate and tied with 'Correos-Manila' Circular Date Stamp

Ebay – March 2023

ADOLFO RICHTER & COMPANY

COVER ADDRESSED TO ADOLFO RICHTER
MANILA



1896 - Domestic Cover from Mindoro to Adolfo Richter, Manila

2c paying Single Weight Domestic Rate, with Red 'Filipinas - Correos - Mindoro' Circular Cancellation

18 February 1896 'Correos-Manila' Arrival Circular Dated Backstamp

Boxed 'Comunicaciones/Admin Pral Manila/Cartera Central' (Manila PO Central Sorting Section) on Reverse

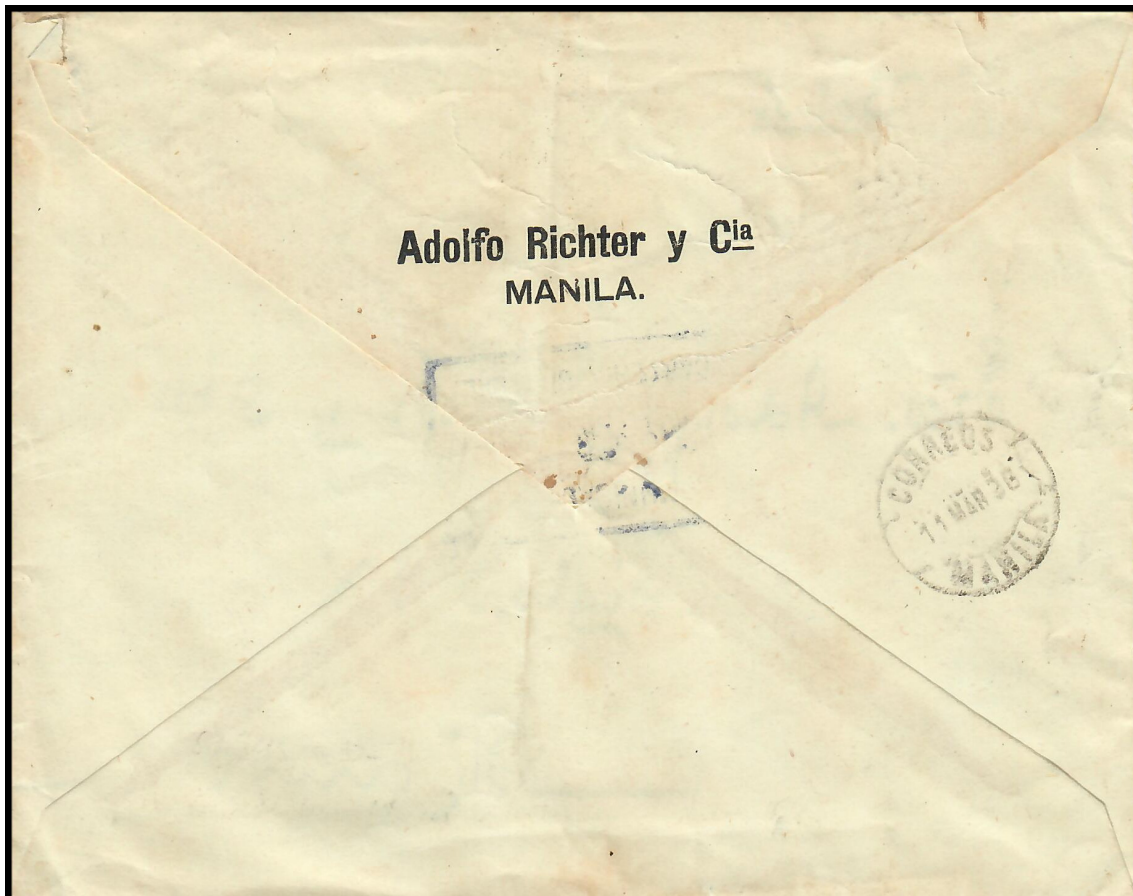


ADOLFO RICHTER & COMPANY

PRINTED RETURN ADDRESS ON BACK OF COVER

RA1: Adolfo Richter y Cia

Adolfo Richter y Cia
MANILA.

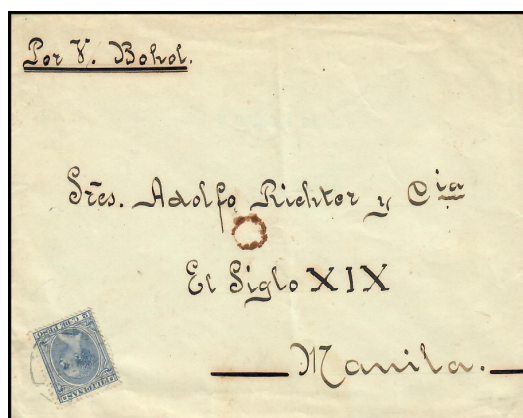


1896 - Non-Manila Originating Domestic Cover Addressed to Adolfo Richter y Cia, El Siglo XIX, Manila
Most Likely Un-cancelled at Origin

2c paying Single Weight Domestic Rate, carried via Steamship 'Bohol'

Cancelled with 11 March 1896 Arrival 'Correos - Manila' Circular Date Stamp on Front and Reverse

Boxed 'Comunicaciones/Admin Pral Manila/Cartera Central' (Manila PO Central Sorting Section) on Reverse

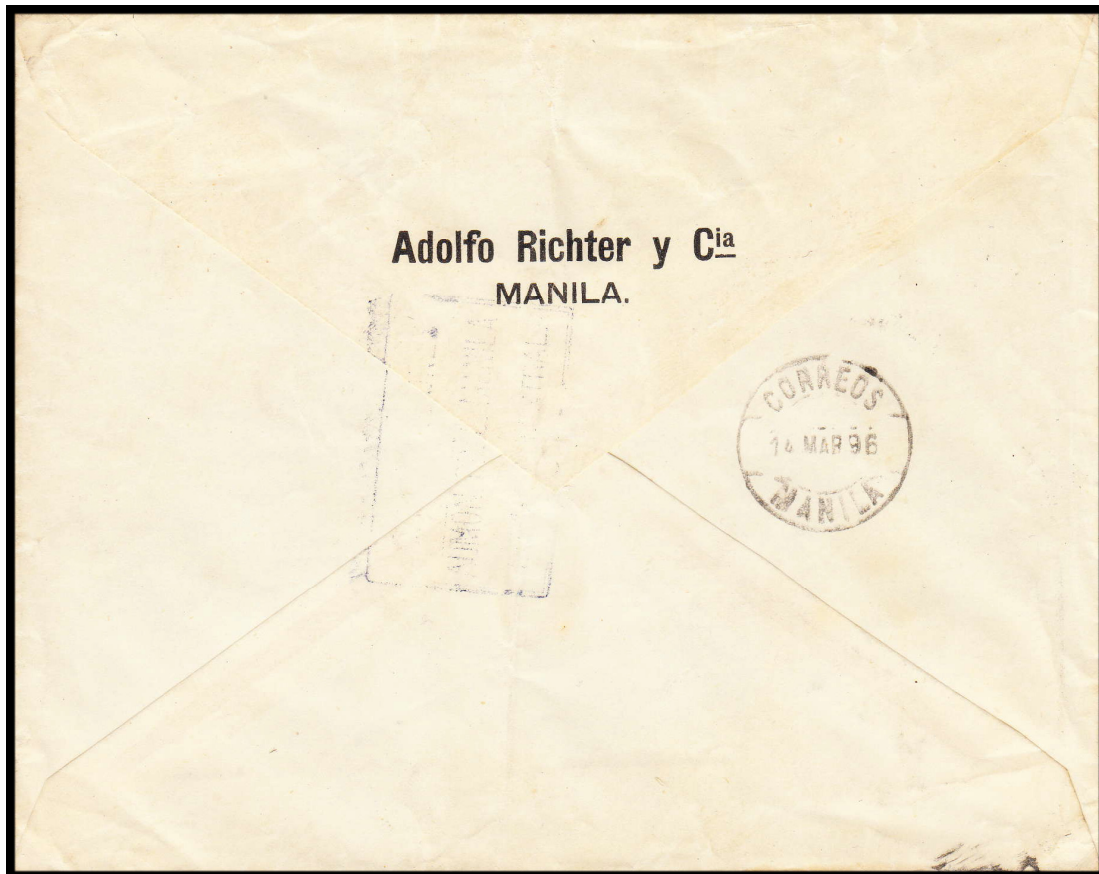


ADOLFO RICHTER & COMPANY

PRINTED RETURN ADDRESS ON BACK OF COVER

RA1: Adolfo Richter y Cia

Adolfo Richter y Cia
MANILA.



14 March 1896 - Domestic Cover Addressed to Adolfo Richter y Cia, El Siglo XIX, Manila
4c paying Double Weight Domestic Rate, cancelled with 'Correos - Manila' Circular Date Stamps
Boxed 'Comunicaciones/Admin Pral Manila/Cartera Central' (Manila PO Central Sorting Section) on Reverse



ADOLFO RICHTER & COMPANY

**COVER ADDRESSED TO FEDERICO RICHTER
ESCOLTA SOMBRERIA
MANILA**



15 April 1896 - Manila Circulating Domestic Cover to Federico Richter in Manila

2c paying Single Weight Domestic Rate, cancelled with 'Correos-Manila' Circular Date Stamp

Boxed 'Comunicaciones/Admin Pral Manila/Cartera Central' (Manila PO Central Sorting Section) on Reverse

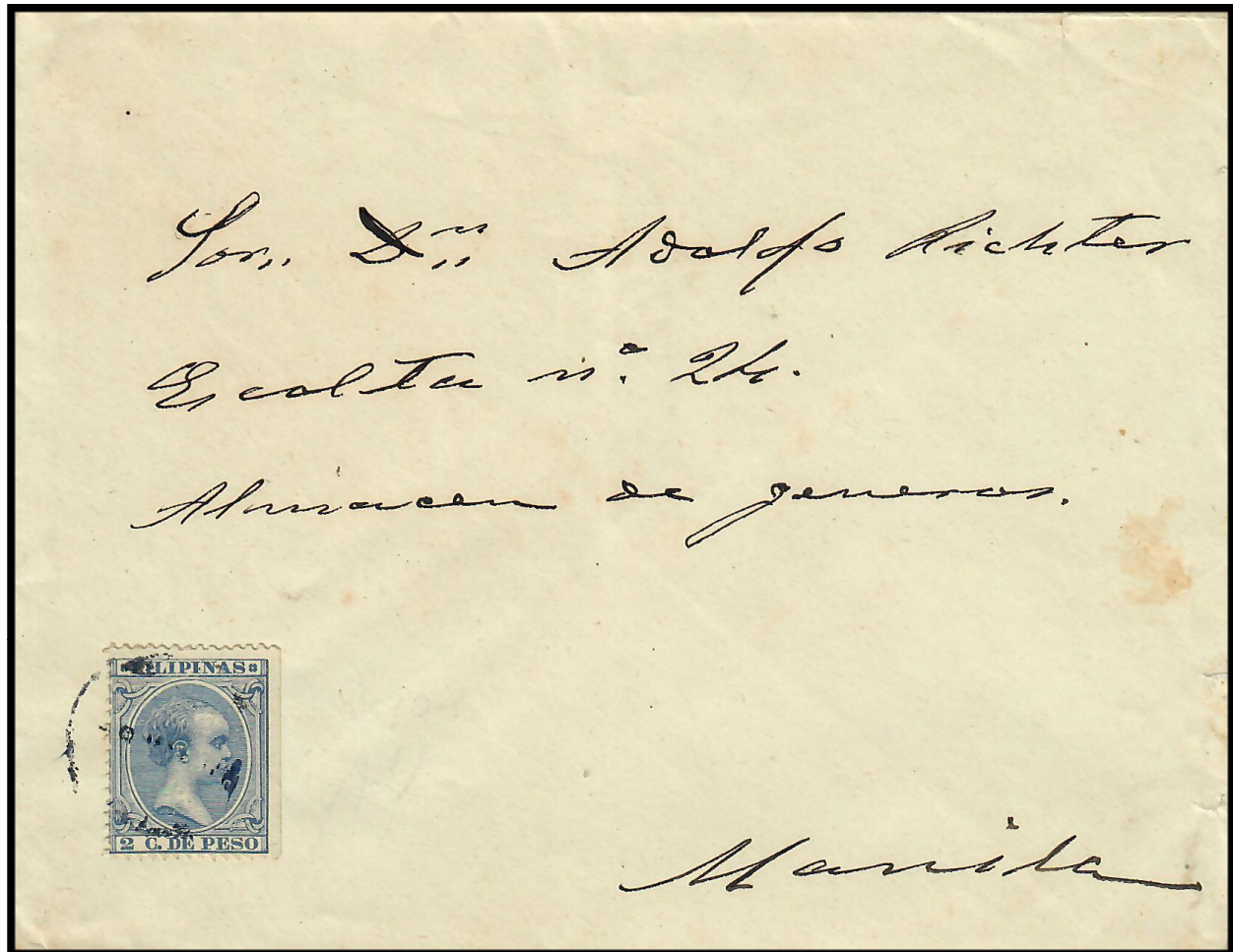
Federico Richter is known to be associated with Adolfo Richter & Company between 1882 and early 1900

ADOLFO RICHTER AND COMPANY

COVER ADDRESSED TO ADOLFO RICHTER

ESCOLTA No. 24

MANILA



8 May 1896 – Non-Manila originating cover addressed to Adolfo Richter, Manila

2c paying Single Weight Domestic Rate, cancelled with partially indistinct 'Correos' CDS

Backstamped with 'Correos - Manila' (13 May 1896) Receiving Circular Date Stamp

ADOLFO RICHTER & COMPANY

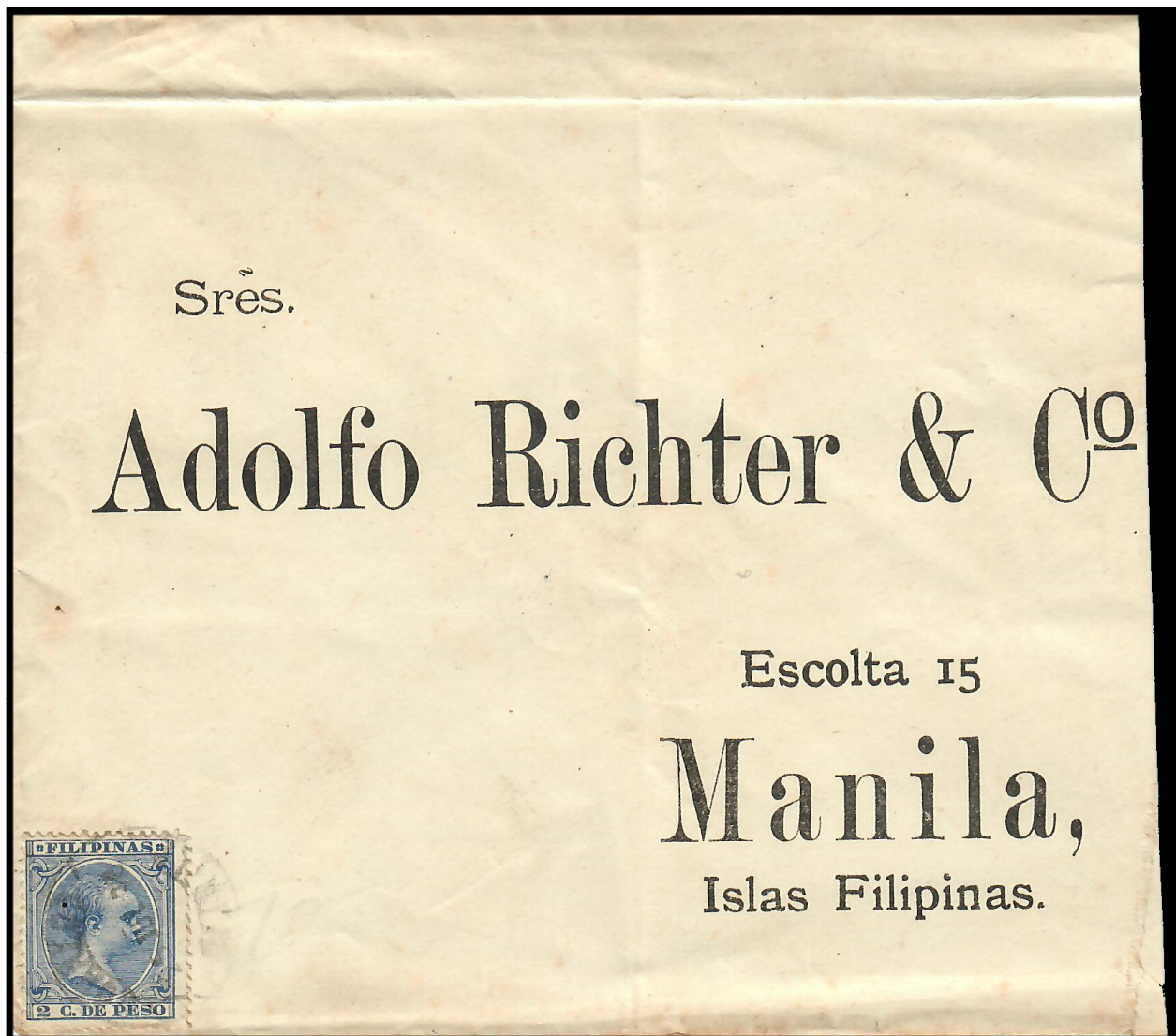
PRE-PRINTED ADDRESSED COVER

Adolfo Richter & Co

Escolta 15

Manila,

Islas Filipinas.



25 July 1896 – Manila Circulating Domestic Cover (cropped slightly on right)

2c paying Single Weight Domestic Rate, cancelled with 'Correos - Manila' Circular Date Stamp

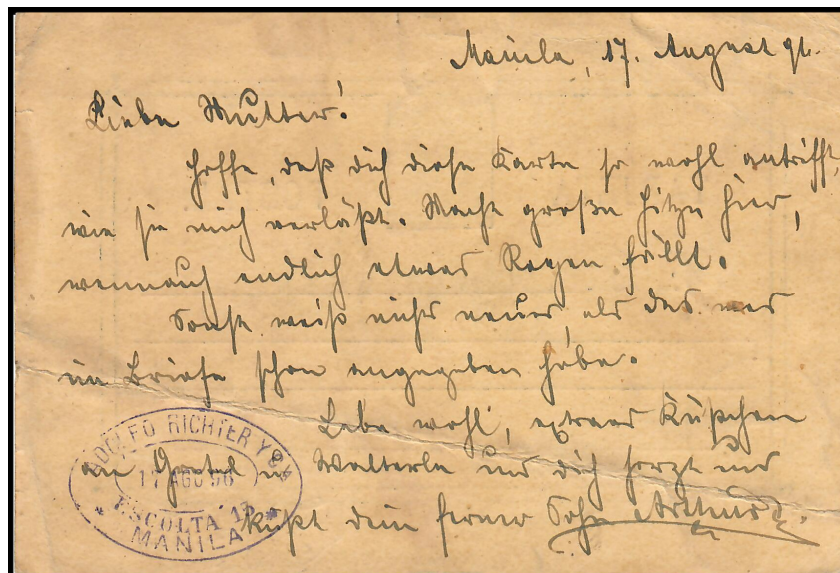
On Pre-Addressed Cover to Adolfo Richter & Co, Escolta 15, Manila

Boxed 'Comunicaciones/Admin Pral Manila/Cartera Central'
(Manila PO Central Sorting Section) on Reverse

ADOLFO RICHTER AND COMPANY

BUSINESS HANDSTAMP

ADOLFO RICHTER Y CA SINGLE LINED OVAL HANDSTAMP



Dateline: 17 August 1896 - Postal Card from Manila to Erfurt, Germany

Up-rated card paying 3c Postal Card Rate to UPU countries
(overpaid by 1c possibly due to no 1c stamps being available)

Tied with 'Correos - Manila' Circular Date Cancellations

Adolfo Richter y Ca (17 August 1896) dated handstamp on reverse side

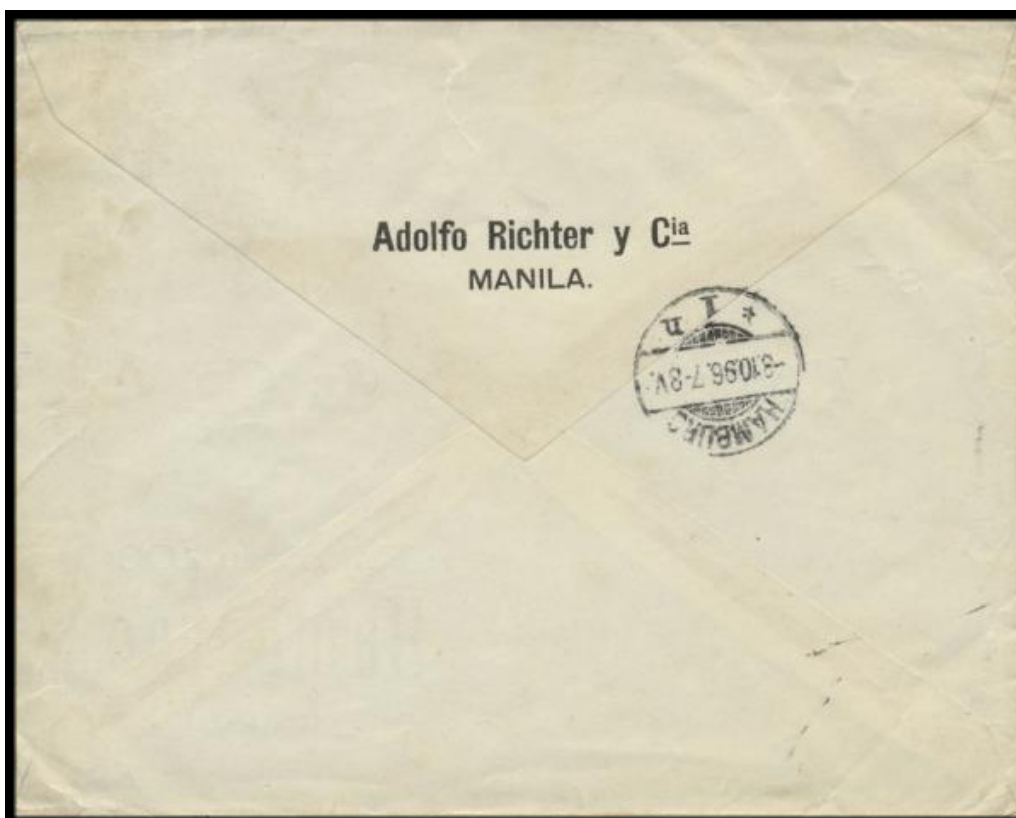
Erfurt (16 September 1896) Receiving Circular Date Stamp on front

ADOLFO RICHTER & COMPANY

PRINTED RETURN ADDRESS ON BACK OF COVER

RA1: Adolfo Richter y Cia

**Adolfo Richter y Cia
MANILA.**



2 September 1896 - Cover from Manila to Hamburg, Germany on Pre-Printed Cover to Otto Gierth & Co
8c paying Single Weight Overseas Rate, cancelled with 'Correos - Manila' Circular Date Stamps
3 October 1896 'Hamburg' Arrival Circular Dated Backstamp



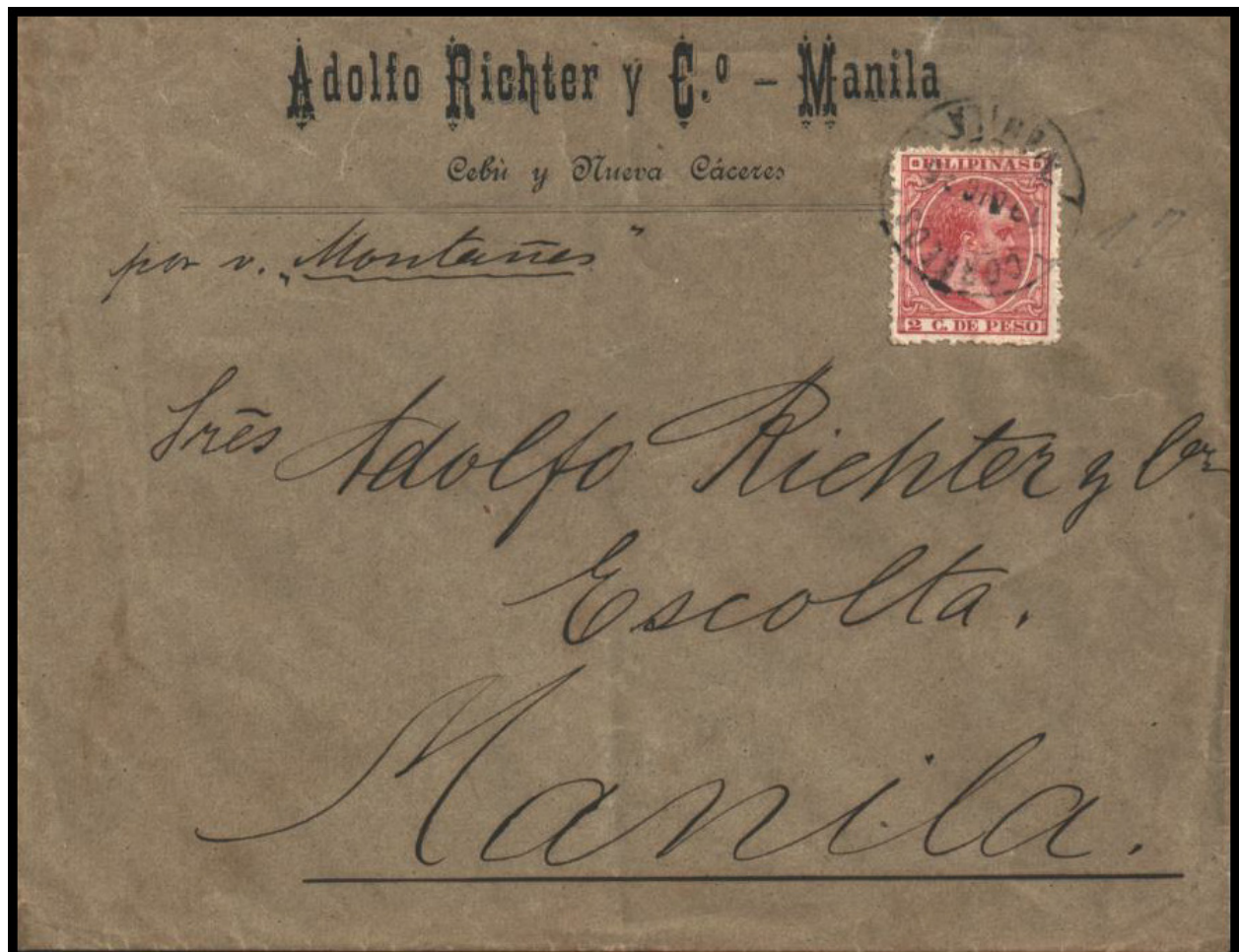
ADOLFO RICHTER & COMPANY

PRIVATELY PRINTED COVERS

PPC3: Adolfo Richter y C.o – Manila



Adolfo Richter y C.o – Manila
Cebú y Nueva Cáceres



1896 - Domestic Cover Addressed to Adolfo Richter and Company, Manila
Non-Manila Originating Cover, Carried by Steamship 'Montañes'

2c paying Single Weight Domestic Rate, Stamp Un-Cancelled at Origin

19 December 1896 'Correos - Manila' Arrival Circular Dated Cancels Tied to Stamp and on Reverse

Boxed 'Comunicaciones/Admin Pral Manila/Cartera Central' (Manila PO Central Sorting Section) on Reverse

ADOLFO RICHTER & COMPANY

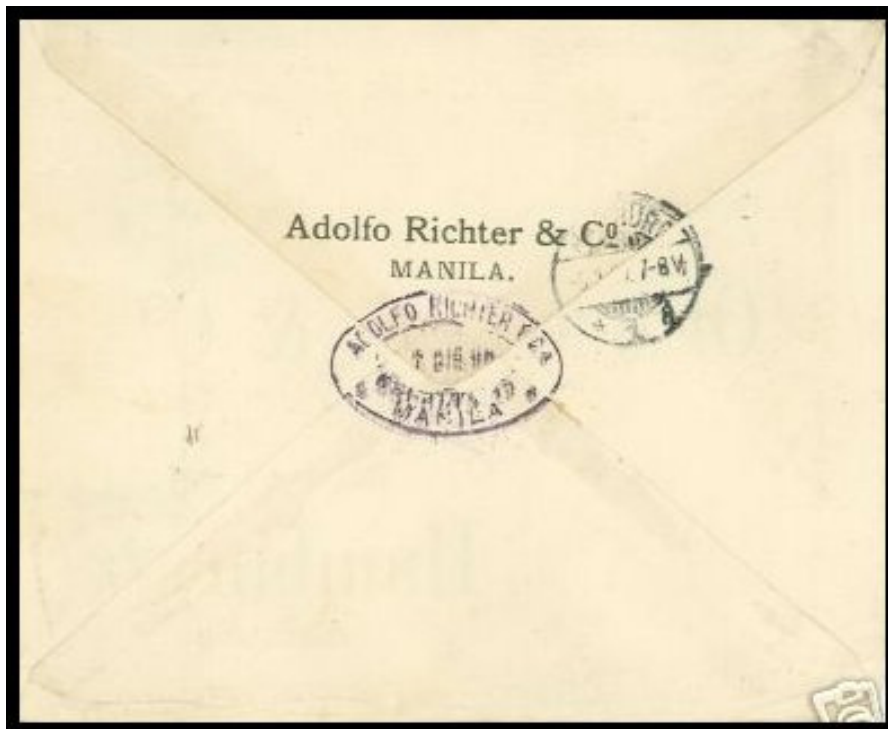
BUSINESS HANDSTAMP AND PRINTED RETURN ADDRESS ON BACK OF COVER

BH1: ADOLFO RICHTER Y CA SINGLE LINED OVAL HANDSTAMP

RA2: Adolfo Richter & Co



Adolfo Richter & Co
MANILA.



27 December 1896 - Cover from Manila to Hamburg, Germany on Pre-Printed Cover to Otto Gierth & Co
16c paying Double Weight Overseas Rate, cancelled with 'Correos-Manila' Circular Date Stamps

Indistinct 'Hamburg' Arrival Circular Dated Backstamp

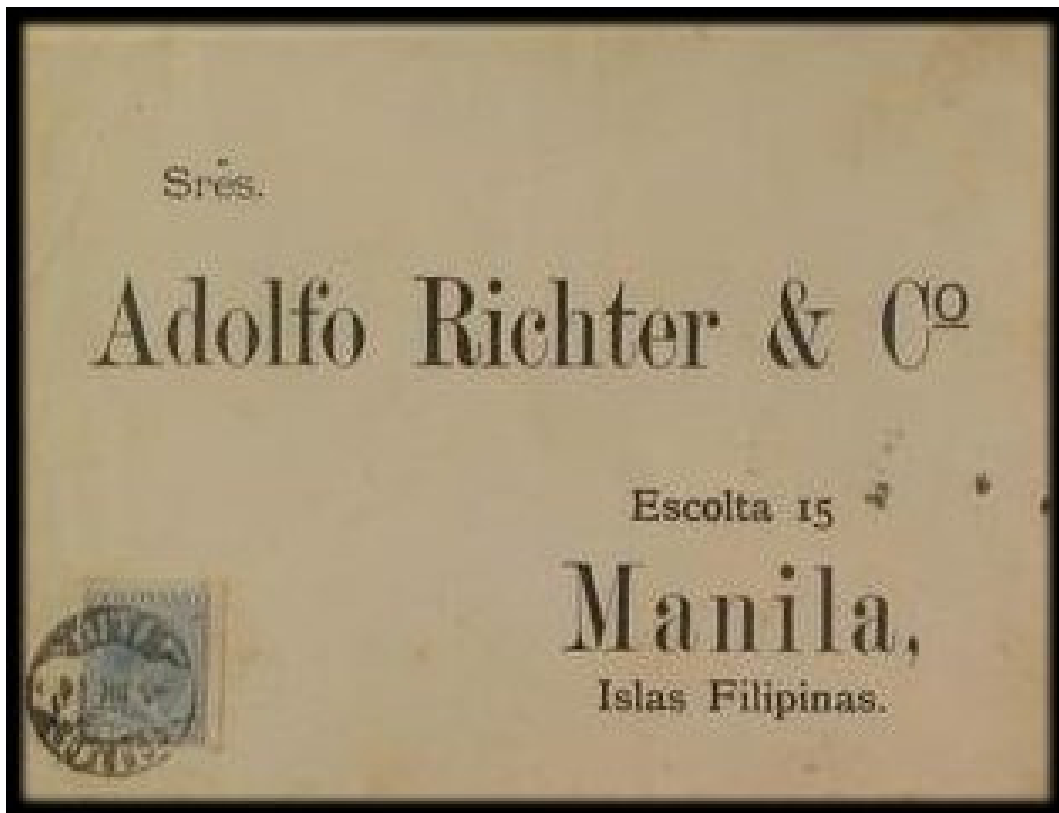
With Printed Return Address (RA2) and 'Adolfo Richter y Ca' Business Handstamp (BH1) on Reverse



ADOLFO RICHTER & COMPANY

PRE-PRINTED ADDRESSED COVER

**Adolfo Richter & Co
Escolta 15
Manila,
Islas Filipinas.**



Circa 1896 – Manila Circulating Domestic Cover

2c paying Single Weight Domestic Rate, cancelled with 'Correos - Manila' Circular Date Stamp

On Pre-Addressed Cover to Adolfo Richter & Co, Escolta 15, Manila

Picture from old Auction Catalogue

ADOLFO RICHTER & COMPANY

PRE-PRINTED ADDRESSED COVER

Adolfo Richter & Co

Escolta 15

Manila,

Islas Filipinas.



Circa 1896 - Pre-Addressed Cover to Adolfo Richter & Co, Escolta 15, Manila

TAMPERED COVER

Original Cover with Genuine Stamps Affixed but cancelled with Bogus 'Correos - Manila' Circular Date Stamps

Created to show 4c Postage, paying Double Weight Domestic Rate

Cancelled with Bogus (24 August 1882) 'Correos - Manila' Circular Date Stamps

Genuine 'Correos - Manila' Circular Date Stamp on Reverse dated 24 August but with Indistinct Year

Boxed 'Comunicaciones/Admin Pral Manila/Cartera Central' (Manila PO Central Sorting Section) on Reverse

This cancel was not used until the mid-1890s



ADOLFO RICHTER & COMPANY

**COVER ADDRESSED TO RICHTER Y CA
MANILA**



Circa 1896 - Domestic Cover Addressed to Richter y Ca, Manila

2c paying Single Weight Domestic Rate, with 'Correos - Manila' (8 May ??) Circular Date Stamps

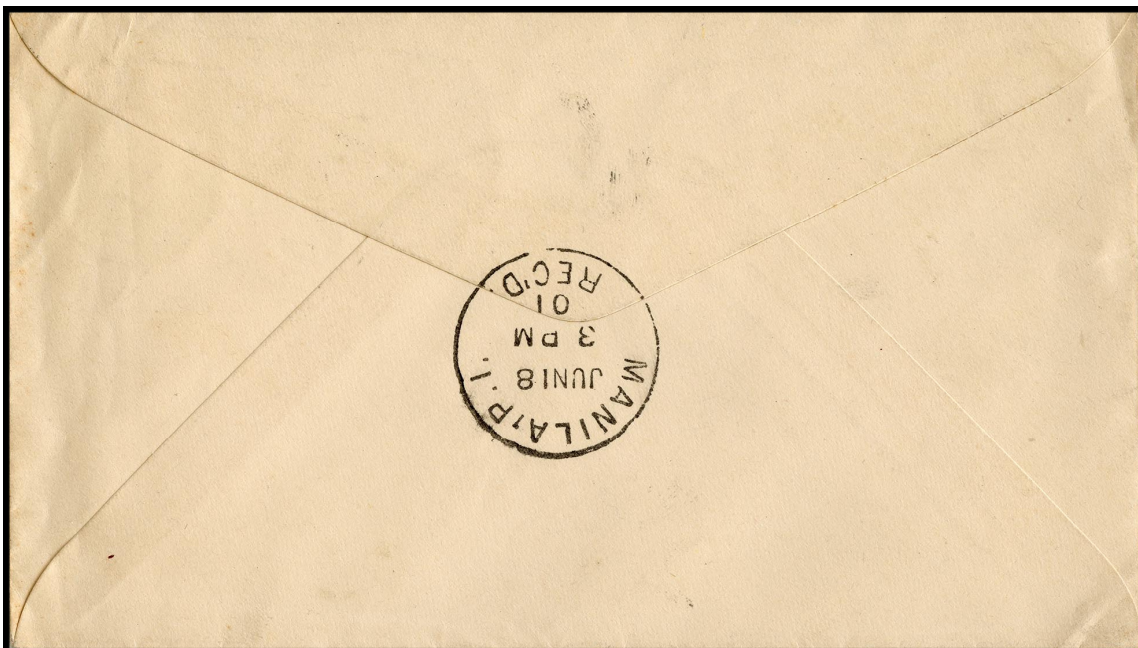
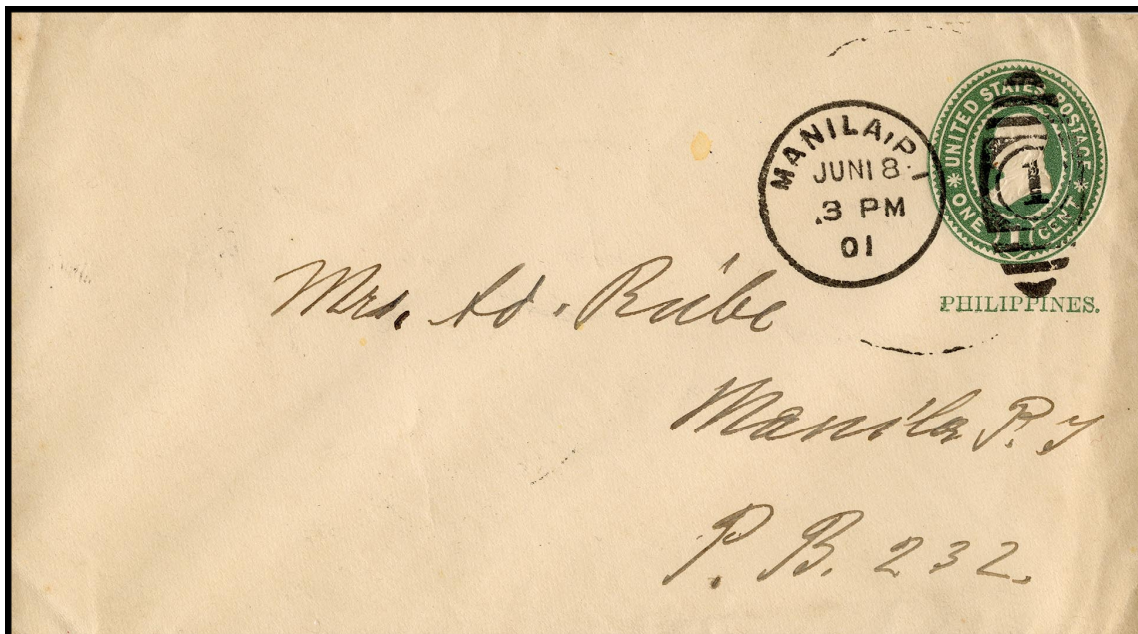
ADOLFO RICHTER & COMPANY

US OCCUPATION

PRE-STAMPED COVER ADDRESSED TO ADOLF RUEBE

P. B. 232

MANILA



18 June 1901 – Manila Circulating Pre-Stamped Cover (Scott #U1) addressed to Adolf Ruebe
'Manila' 18 June 1901 Departure Duplex Cancel and Receiving Circular Date Backstamp

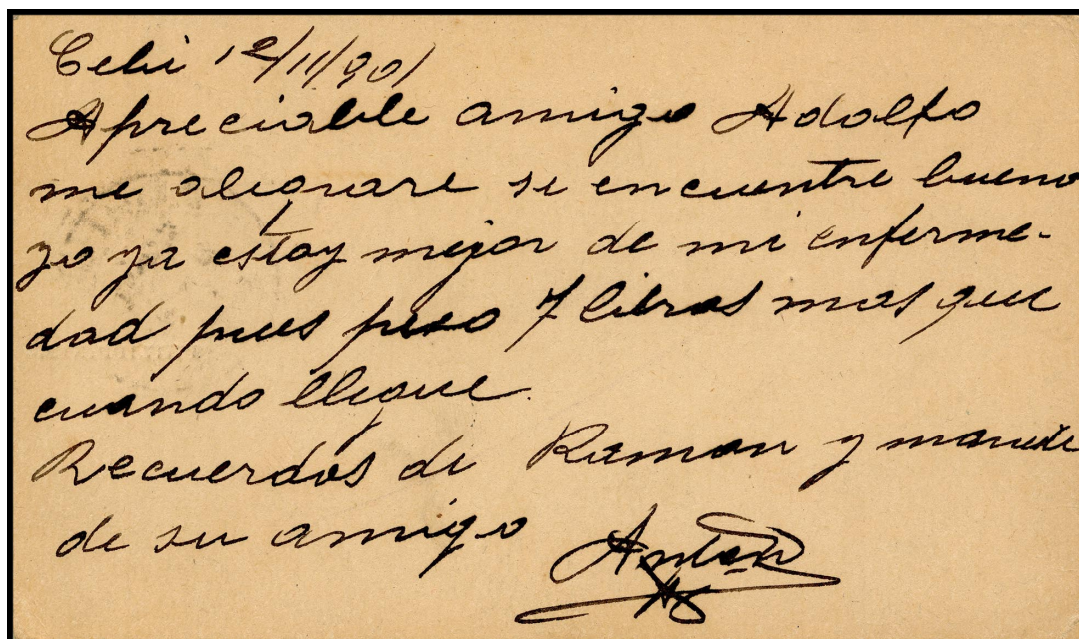
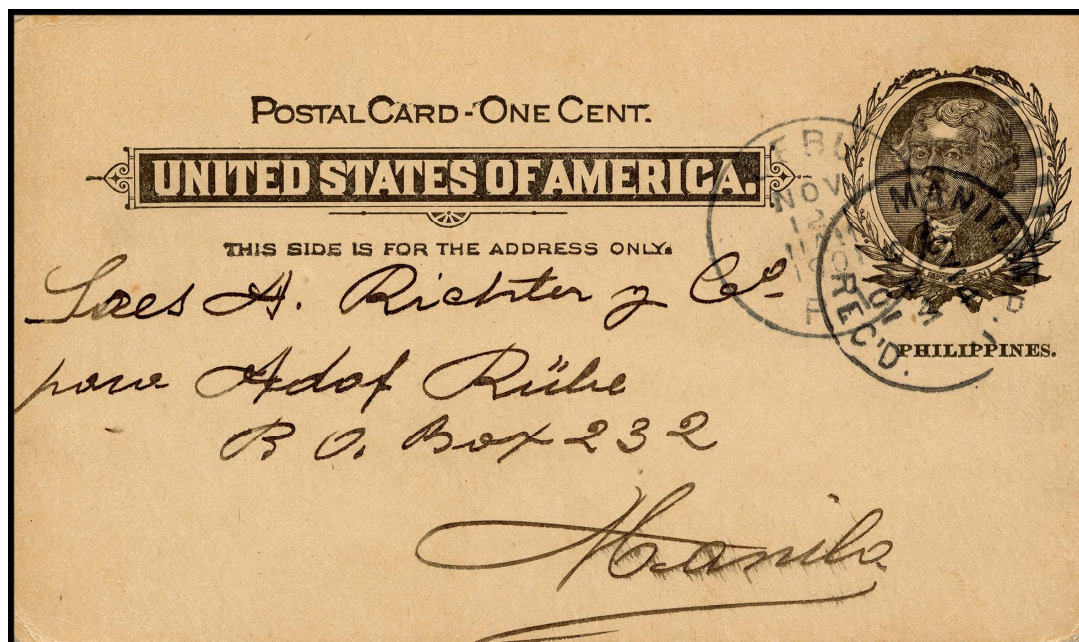
ADOLFO RICHTER & COMPANY

US OCCUPATION

POSTAL CARD ADDRESSED TO ADOLFO RICHTER & CO

PO Box 232

MANILA

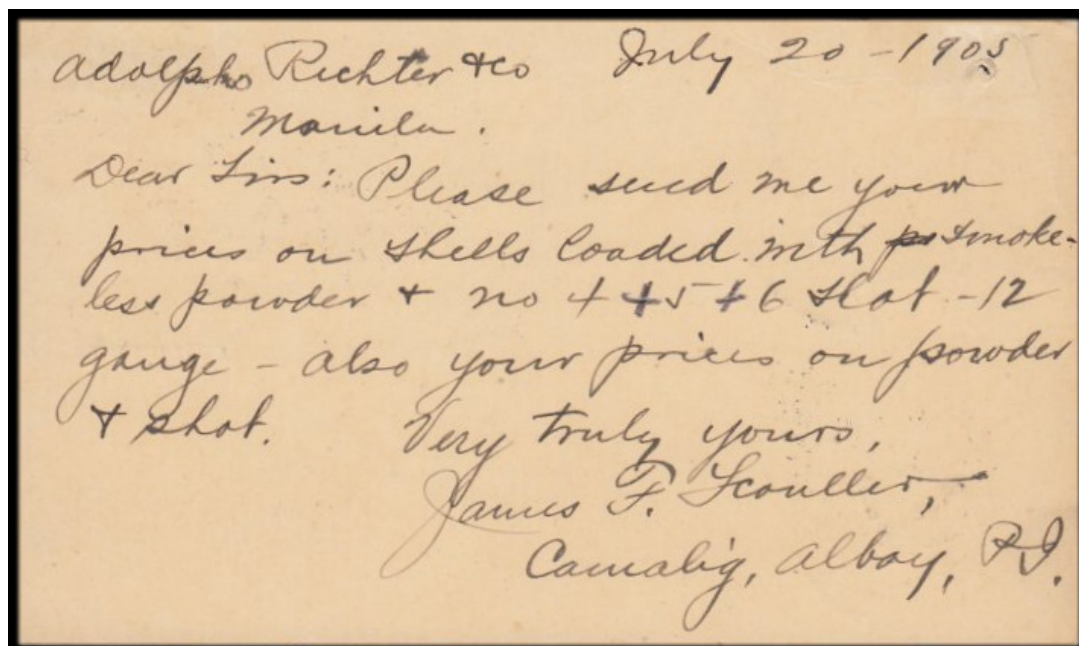


12 November 1901 - Postal Card (Scott #UX1) from Cebu to Manila, addressed to Adolf Ruebe
'Cebu' Departure Duplex Cancel and 14 November 1901 Manila Receiving CDS

ADOLFO RICHTER & COMPANY

US OCCUPATION

POSTAL CARD ADDRESSED TO ADOLFO RICHTER & CO
57 ESCOLTA
MANILA



22 July 1905 - Postal Card (Scott #UX1) from Camalig, Albay to Manila

'Camalig - Albay' Departure Duplex Cancel and 28 July 1905 Manila Transit CDS

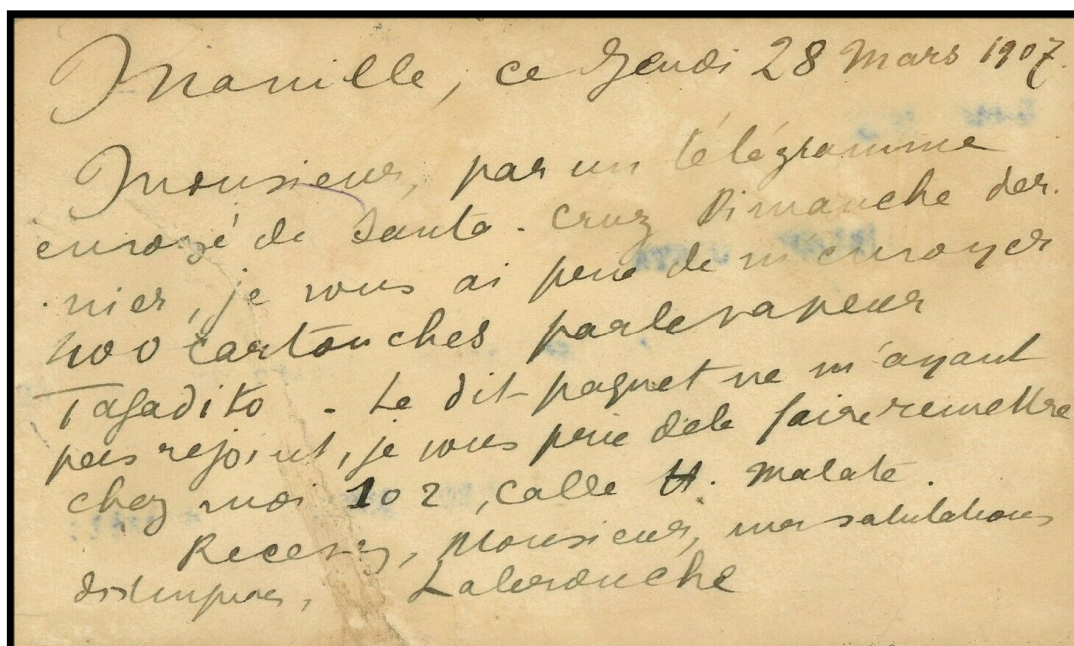
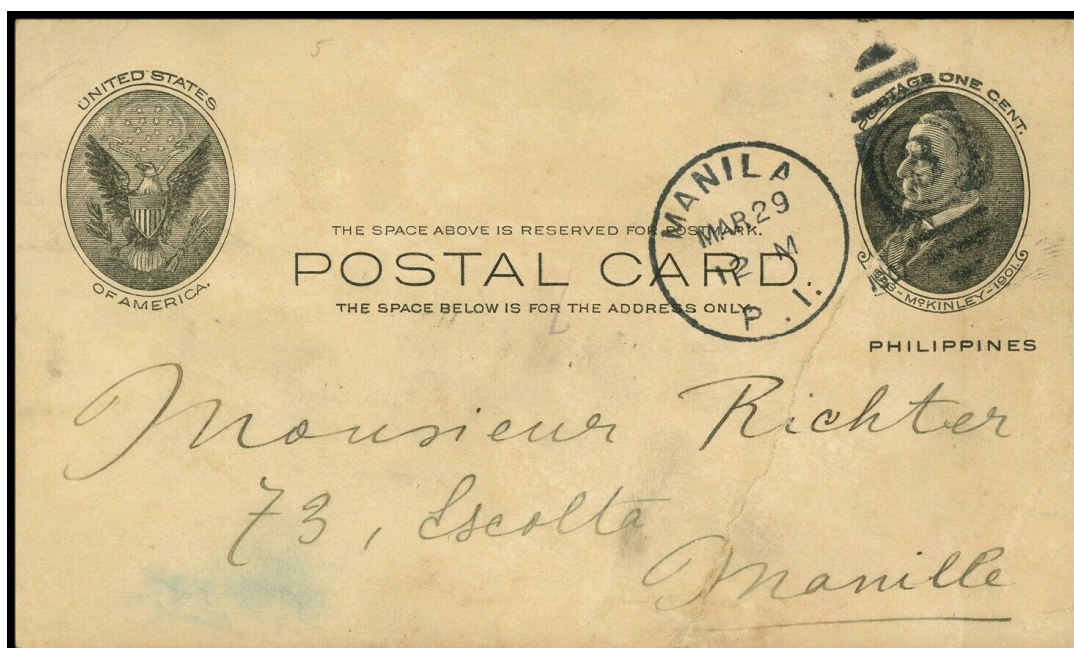
ADOLFO RICHTER & COMPANY

US OCCUPATION

POSTAL CARD ADDRESSED TO MONSIEUR RICHTER

73 ESCOLTA

MANILA



Dateline: 28 March 1907 – Manila Circulating Postal Card (Scott #UX7)

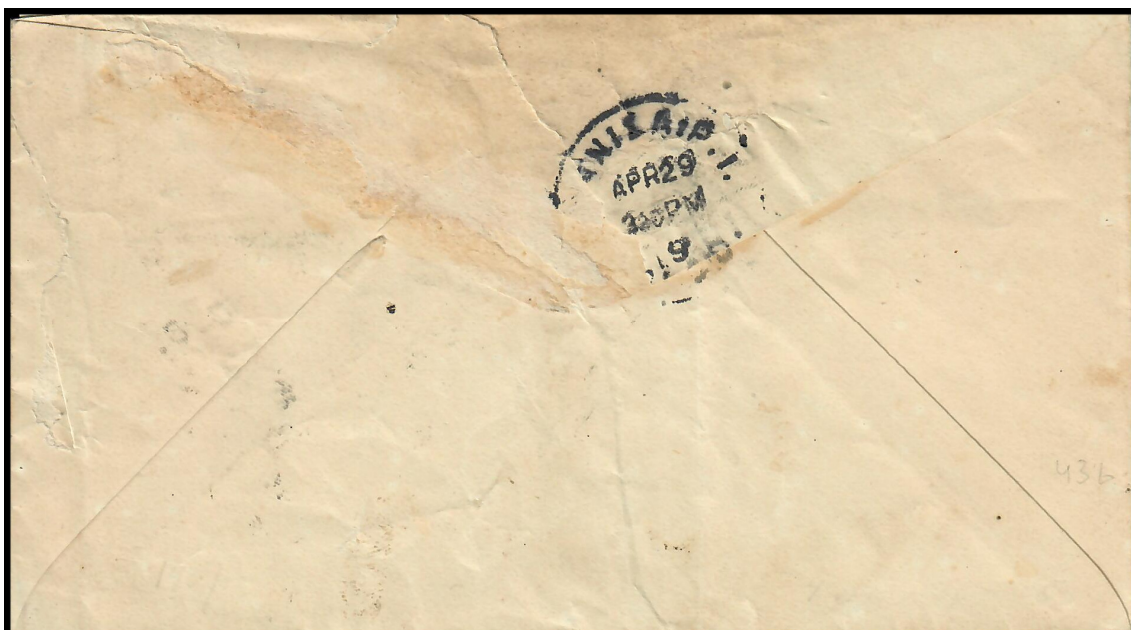
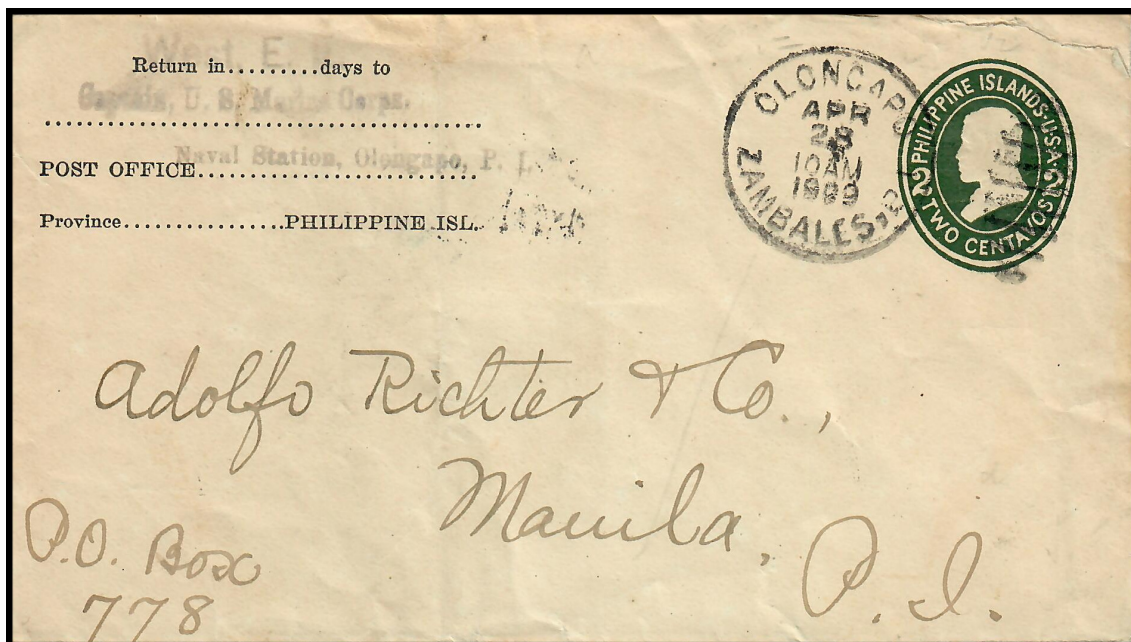
'Manila' 29 March 1907 Duplex Cancel

Ebay Listing (October 2021)

ADOLFO RICHTER & COMPANY

US OCCUPATION

PRE-STAMPED ENVELOPE ADDRESSED TO ADOLFO RICHTER & Co
PO Box 778
MANILA

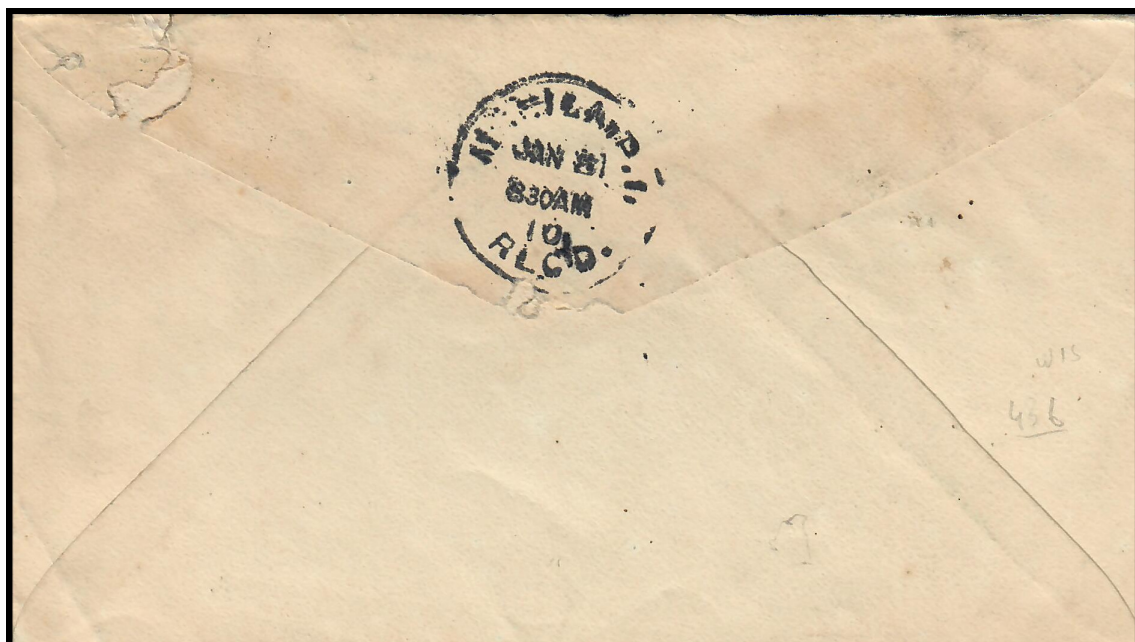
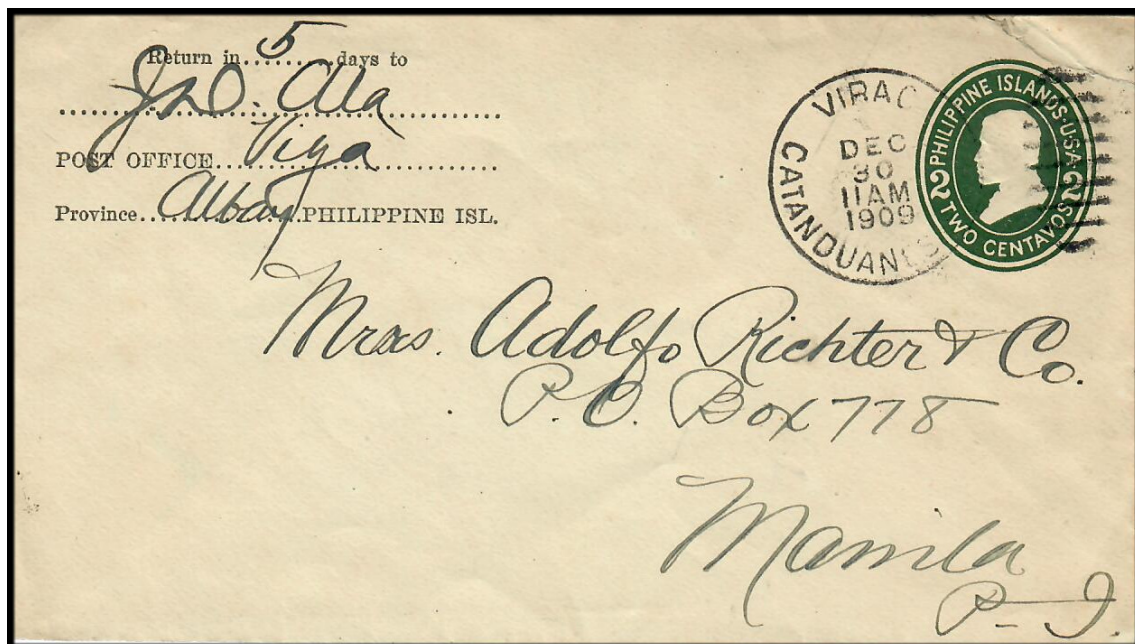


28 April 1909 - Pre-Stamped Envelope (Scott #U30) from Olongapo, Zambales to Manila
'Olongapo - Zambales' Departure Duplex Cancel
29 April 1909 'Manila' Receiving Circular Date Backstamp

ADOLFO RICHTER & COMPANY

US OCCUPATION

PRE-STAMPED ENVELOPE ADDRESSED TO ADOLFO RICHTER & Co
PO Box 778
MANILA



30 December 1909 - Pre-Stamped Envelope (Scott #U30) from Viga, Albay to Manila
'Virac - Catanduanes' Departure Duplex Cancel
8 January 1910 'Manila' Receiving Circular Date Backstamp

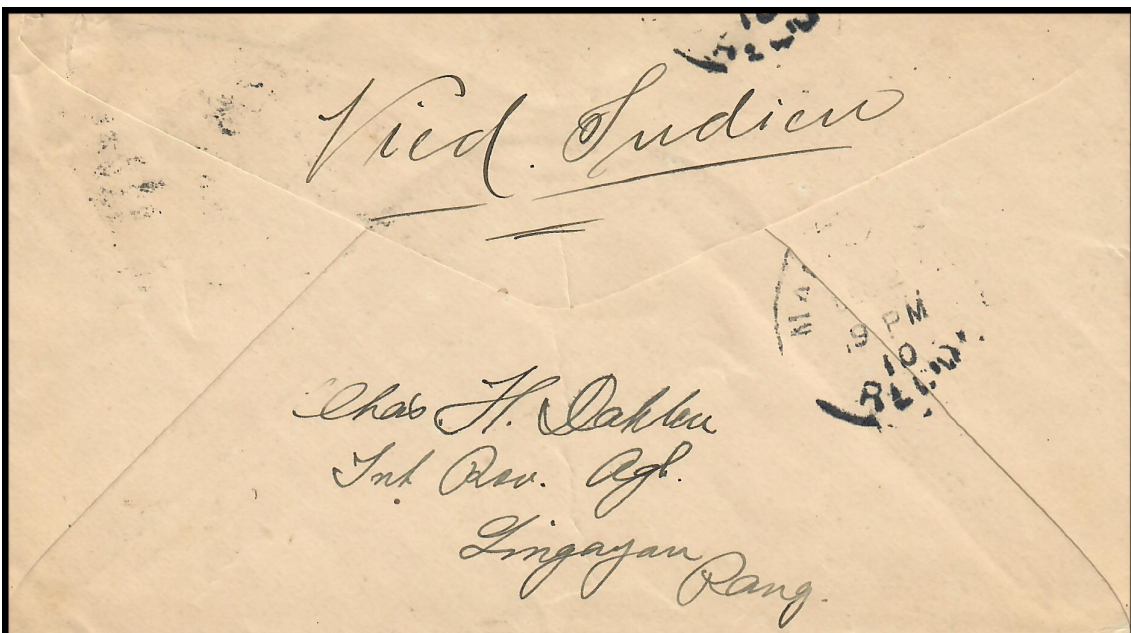
ADOLFO RICHTER & COMPANY

US OCCUPATION

PRE-STAMPED ENVELOPE ADDRESSED TO ADOLFO RICHTER

ESCOLTA

MANILA



2 December 1910 - Pre-Stamped Envelope (Scott #U30) from Dagupan, Pangasinan to Manila

'Dagupan - Pangasinan' Departure Duplex Cancel

2 December 1910 'Manila' Receiving Circular Date Backstamp