



MANILA OVAL

Manila, Island of Luzon and Capital of the Philippines

Single Outer Lined Oval Cancel

33mm Wide, 20mm High

Straight Line 'MANILA' in Centre

Serif, all 6.5mm tall

DOUBTFUL CANCELLATION



Regarco de Consumos



Regarco de Consumos



Regarco de Consumos



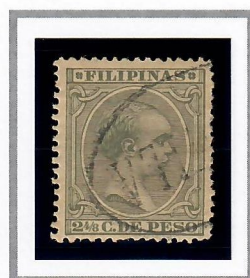
Regarco de Consumos



Scott #140 (1892)



Scott #150 (1892)



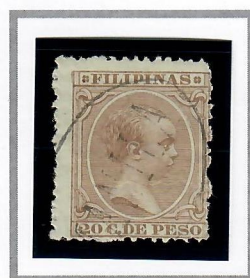
Scott #150 (1892)



Scott #153 (1892)



Scott #158 (1894)



Scott #174 (1892)



Scott #P5 (1890)



MANILA OVAL

Manila, Island of Luzon and Capital of the Philippines

Single Outer Lined Oval Cancel

33mm Wide, 20mm High

Straight Line 'MANILA' in Centre

Serif, all 6.5mm tall

DOUBTFUL CANCELLATION

AGUINALDO ISSUES



Scott #Y2 (1898)



Scott #Y2 (1898)



Scott #Y2 (1898)



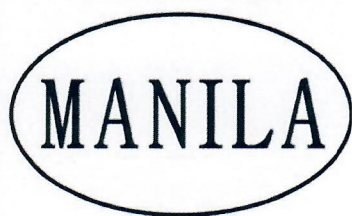
Scott #YP1 (1898)



Scott #YP1 (1898)



Scott #YP1 (1898)



MANILA OVAL

Manila, Island of Luzon and Capital of the Philippines

Single Outer Lined Oval Cancel

33mm Wide, 20mm High

Straight Line 'MANILA' in Centre

Serif, all 6.5mm tall

DOUBTFUL CANCELLATION

AGUINALDO ISSUES

TELEGRAPH STAMPS

