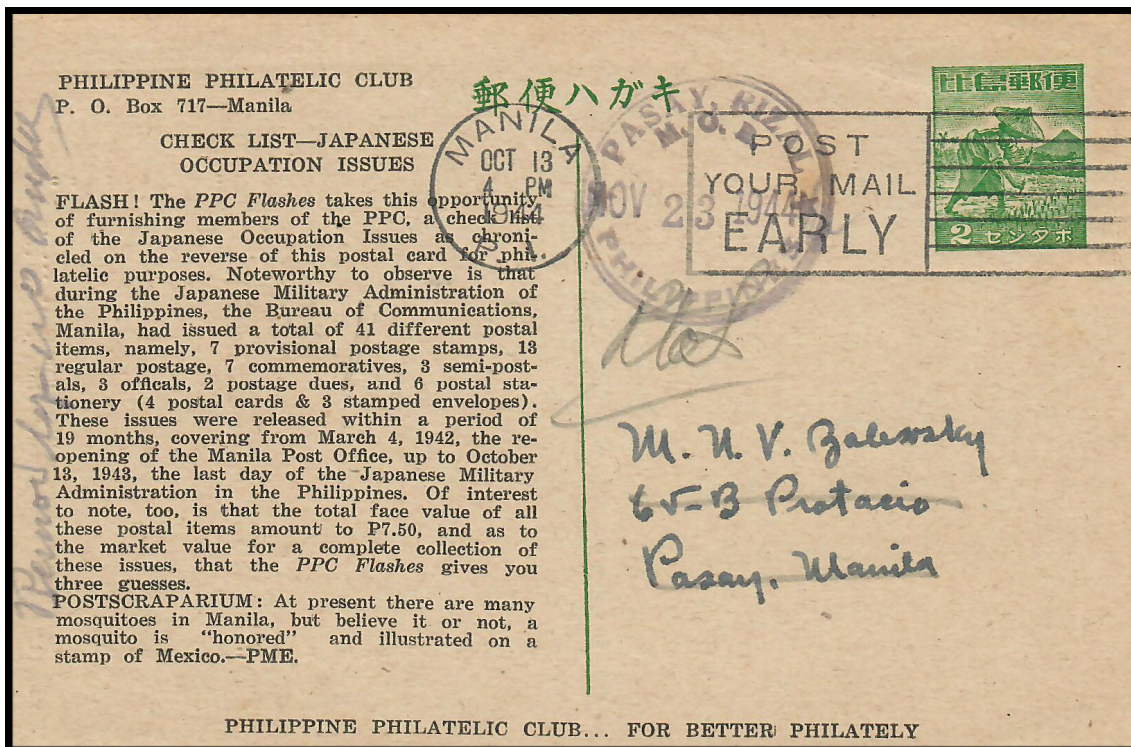


# PHILIPPINE PHILATELIC CLUB

OCTOBER 13, 1944

## PPC FLASHES – NUMBER 16

Printed Postal Card providing a check list of the Japanese Occupation issues as chronicled on the reverse of the card. 2c Planters Postal Card with 'Post Your Mail Early' Slogan Cancel. Philippine Philatelic Club corner card.



PHILIPPINE PHILATELIC CLUB... FOR BETTER PHILATELY

PPC FLASHES	NO. 16
<b>CHECK LIST—JAPANESE OCCUPATION ISSUES</b>	<b>ISSUES</b>
<i>First Day Issue</i>	<i>Classification</i>
Mar. 4/42—2c green Rizal deleted w/blk. bars.	Provisional.
" "—16c blue Magellan's Landing deleted with black bars	"
" "—2c rose Rizal. Postal Card, deleted with black bars.	"
May 18/42—2c on 4c Victory Issue.	Commemorative.
Sep. 1/42—5c on 6c Filipina, deleted with black bars.	Provisional.
Sep. 3/42—8c red Postage Due, deleted with black Double Bar	"
Oct. 13/42—3c red Postage Due, deleted with black Single Bar	"
Nov. 12/42—2+1c Food Prod. Camp.	Semi-Postal.
" "—5+1c Food Prod. Camp.	"
" "—16+2c Food Prod. Camp.	"
Dec. 8/42—5c on 4c Greater East Asia War Anniversary	Commemorative.
Dec. 12/42—2c green Rizal, Postal Card, with black bars	Provisional.
Jan. 11/43—16c on 30c Blood Compact with black bars.	Provisional.
Jan. 23/43—2c on 8c Phil. Ex. Commission	Commemorative.
" "—5c on 1P Phil. Ex. Commission, First Anniversary	"
Apr. 1/43—2c green Rice Planter	Regular.
" "—5c brown Mayon & Fuji	"
Apr. 1/43—5c on 2c Embossed Stpd. Envelope (Plain)	Provisional.
" "—5c on 2c Embossed Stpd. Envelope (Ret. Address)	"
Apr. 7/43—2c green Rizal, with "K.P."	Official.
" "—5c on 6c Filipina, with "K.P."	"
" "—16c on 30c Blood Compact, with "K.P."	"
Apr. 7/43—2c rose Rizal. Postal Card	Official.
Apr. 30/43—12c black Salt Springs, w/blk. bars.	Provisional.
" "—50c on 1P Barasain, w/blk. deletion.	"
May 7/43—1P on 4P Montalban, w/blk. deletion.	Commemorative.
" "—2c green Fall of Bataan & Cor., 1st Anniversary	"
" "—5c red Fall of Bataan & Cor., 1st Anniversary	"
May 17/43—2c green Rice Planter, Postal Card.	Regular.
Jun. 7/43—1c bright orange Nipa Hut	Regular.
" "—4c dark olive Nipa Hut	"
" "—1P red Mayon & Fuji	"
Jun. 20/43—12c on 20c Printing Press, 350th Anniversary	Commemorative.
Jul. 14/43—6c red Rice Planter	Regular.
" "—10c prussian blue Mayon & Fuji	"
" "—12c blue Moro Vinta	"
" "—16c brown Moro Vinta	"
Aug. 16/43—20c purple Nipa Hut	Regular.
" "—21c light violet Mayon & Fuji	"
" "—25c light brown Rice Planter	"
Sep. 16/43—2P purple Moro Vinta	Regular