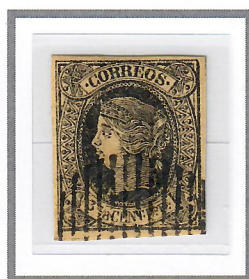
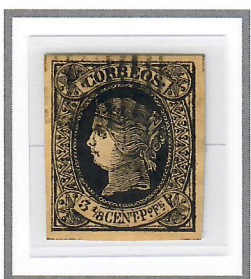
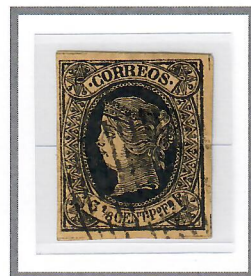
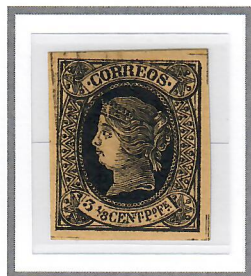
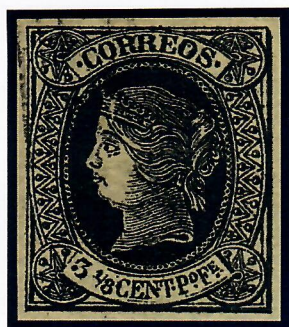
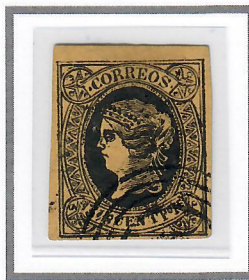
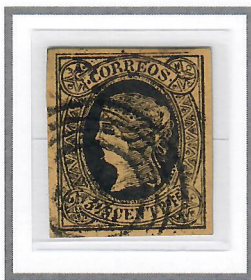
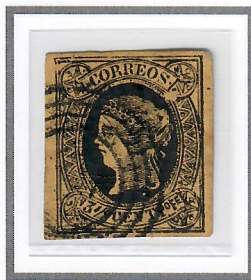
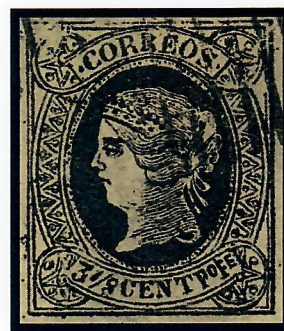
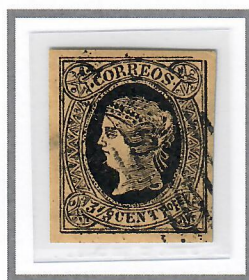
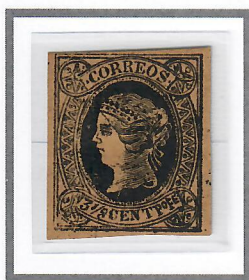


JANUARY 1, 1864

3-1/8 CENTIMOS DE PESO FUERTE



Gooding #21F1. Lithographed on strongly coloured wove paper, rather thinner than that of the genuine. Most of the stalked pearls in the side-frames touch either the inner or outer curved lines of the frame. The thin, inner line of the frame, below the value, is incomplete, and only shows a short piece under 'CENT', and another short piece under 'Po Fe'. The 'T' of 'CENT' has no bottom stroke. The line which marks the black part of the upper lip is too short, and does not go to the end of the profile. The stop before 'CORREOS' is a good deal nearer the 'C' than to the end of the label; and the stop after 'CORREOS' is rather nearer to the 'S' than to the end of the label. The bottom loop of the '3' is broken and ends in a large dot.



Gooding #21F2. A rather crude forgery and easily identifiable. Most of the stalked pearls in the side-frames touch the inner or outer curved lines of the frame. There is no stop after 'CENT', and the stops under 'o' and 'e' of 'Po Fe' are represented by dashes, or hyphens, level with the bottoms of the large capitals, instead of being level with their centres. There are no curved lines of shading round the star-ornaments in the corners of the stamp. The chain pattern, round the outer edge of the dark central oval, is altogether absent.