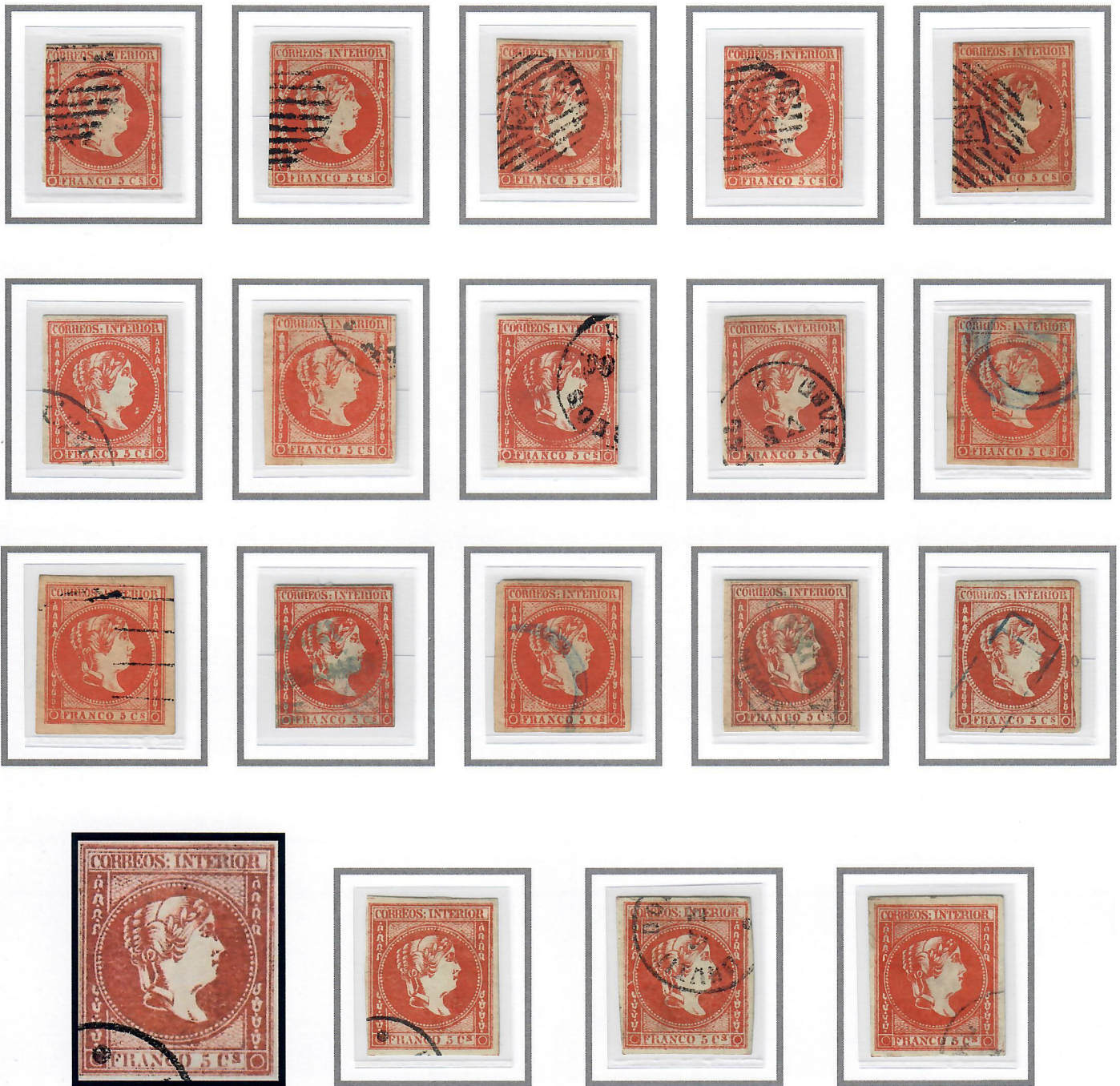


JANUARY 1863

5-CUARTOS

Gooding #14F3

USED – VARIOUS CANCELLATIONS



**Gooding #14F4.** The 'CO' of 'CORREOS' is lower than the other letters. The first 'R' of 'INTERIOR' has a wide top loop. The circle almost touches the line at the top and bottom, with only one row of the fish-scale network above the top of the central circle and below the bottom of it. The bust is pointed and closer to the circle of pearls than the genuine. The '5' in '5 Cs' has a long staff and wide bottom loop and there is no period to the right of the 's'. Known cancelled.