

1890 – 1897

'INUTILIZADO' ROUNDED EDGE BOXED CANCEL

INUTILIZADO



2c Claret (1894)
Cliché I – Scott #144



2c Claret (1894)
Cliché I – Scott #144



2c Claret (1894)
Cliché I – Scott #144



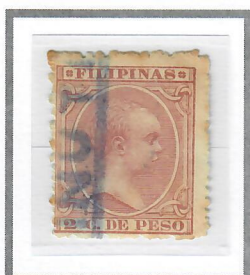
2c Claret (1894)
Cliché I – Scott #144



2c Claret (1894)
Cliché I – Scott #144



2c Claret (1894)
Cliché I – Scott #144



2c Claret (1894)
Cliché I – Scott #144



2c Claret (1894)
Cliché II – Scott #144



2c Claret (1894)
Cliché II – Scott #144



2c Claret (1894)
Cliché II – Scott #144



2c Ultramarine (1896)
Cliché III – Scott #147



2c Ultramarine (1896)
Cliché III – Scott #147



2c Ultramarine (1896)
Cliché III – Scott #147



2c Ultramarine (1896)
Cliché III – Scott #147



2c Ultramarine (1896)
Cliché III – Scott #147



2c Ultramarine (1896)
Cliché III – Scott #147



2-4/8c Dull Blue (1890)
Cliché I – Scott #149



10c Yellow Brown (1896)
Cliché III – Scott #166



15c Blue Green (1896)
Cliché II – Scott #171