

1890 – 1897

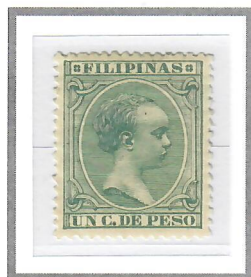
POSTAGE STAMPS



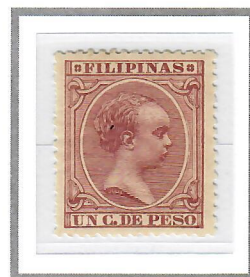
1c Violet (1892)
Cliché II – Gum Type A
Scott #140



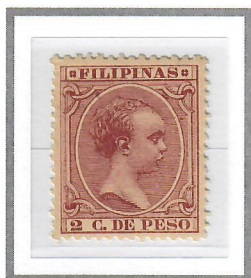
1c Rose (1894)
Cliché II – Gum Type B
Scott #141



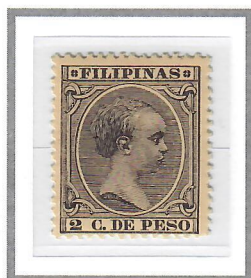
1c Blue Green (1896)
Cliché II – Gum Type C
Scott #142



1c Claret (1897)
Cliché II – Gum Type C
Scott #143



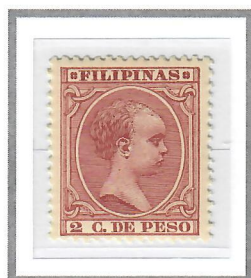
2c Dark Claret (1890)
Cliché I – Gum Type A
Unlisted in Scott



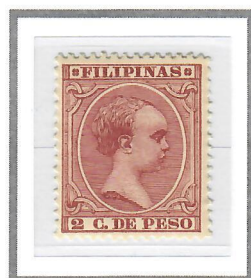
2c Violet (1892)
Cliché I – Gum Type A
Scott #145



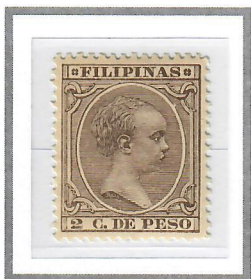
2c Violet (1892)
Cliché II – Gum Type A
Scott #145



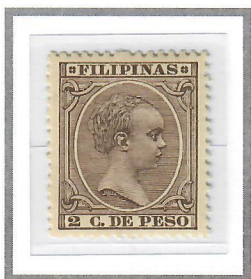
2c Claret (1894)
Cliché I – Gum Type B
Scott #144



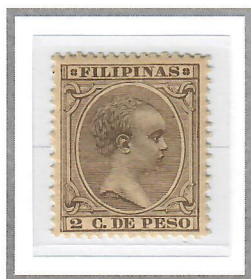
2c Claret (1894)
Cliché II – Gum Type B
Scott #144



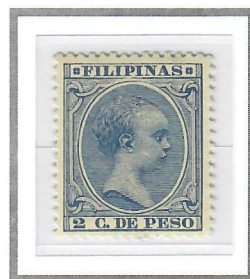
2c Dark Brown (1894)
Cliché I – Gum Type B
Scott #146



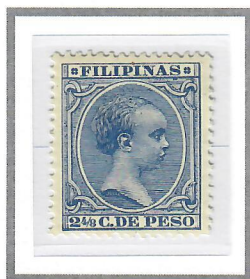
2c Dark Brown (1894)
Cliché II – Gum Type B
Scott #146



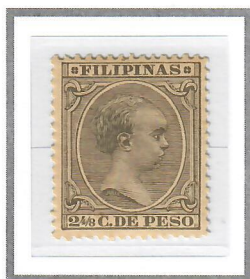
2c Grey Brown (1896)
Cliché III – Gum Type C
Scott #148



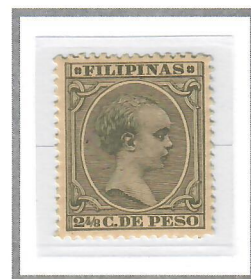
2c Ultramarine (1896)
Cliché III – Gum Type C
Scott #147



2-4/8c Dull Blue (1890)
Cliché I – Gum Type A
Scott #149



2-4/8c Olive Grey (1892)
Cliché I – Gum Type A
Scott #150



2-4/8c Grey Olive (1892)
Cliché I – Gum Type A
Scott #150